



Everest Biotech Ltd
Cherwell Innovation Centre
77 Heyford Park
Upper Heyford
Oxfordshire
OX25 5HD, United Kingdom

everestbiotech.com

sales@everestbiotech.com

support@everestbiotech.com

Tel +44 1869 238326

Fax +44 1869 238327

Research Use Only. Not for diagnostic or therapeutic use.

Storage: For long-term storage keep aliquots at -20°C. (Store no longer than 12 months at 4°C). Minimize freezing and thawing.

EB06688 - Goat Anti-Neuroserpin Antibody

Size: 100µg specific antibody in 200µl



Target Protein

Principal Names: DKFZp781N13156, serpin peptidase inhibitor, clade I (neuroserpin), member 1, protease inhibitor 12 (neuroserpin), serine (or cysteine) proteinase inhibitor, clade I (neuroserpin), member 1, PI12, SERPINI1, neuroserpin

Official Symbol: SERPINI1

Accession Number(s): NP_005016.1; NP_001116224.1

Human GeneID(s): [5274](#)

Immunogen

Peptide with sequence C-TMNTSGHDFEEL, from the C Terminus of the protein sequence according to NP_005016.1; NP_001116224.1.

Please note the [peptide](#) is available for sale.

Purification and Storage

Purified from goat serum by ammonium sulphate precipitation followed by antigen affinity chromatography using the immunizing peptide.

Supplied at 0.5 mg/ml in Tris saline, 0.02% sodium azide, pH7.3 with 0.5% bovine serum albumin.

Aliquot and store at -20°C. Minimize freezing and thawing.

Applications Tested

Peptide ELISA: antibody detection limit dilution 1:32000.

Western blot: Approx 48kDa band observed in Human Brain lysate (calculated MW of 46.4kDa according to NP_005016.1). Recommended concentration: 1-3µg/ml.

Species Reactivity

Tested: Human

Expected from sequence similarity: Human, Mouse, Rat, Cow

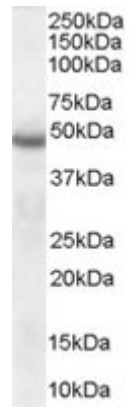
Background Reference

Onda M, Belorgey D, Sharp LK, Lomas DA.

Latent Ser49Pro neuroserpin forms polymers in the dementia familial encephalopathy with neuroserpin inclusion bodies.

J Biol Chem. 2005 Jan 21; [Epub ahead of print]

PMID: 15664988



EB06688 (1 μ g/ml) staining of Human Brain lysate (35 μ g protein in RIPA buffer). Primary incubation was 1 hour.
Detected by chemiluminescence.