



## UK Office

### Everest Biotech Ltd

Cherwell Innovation Centre  
77 Heyford Park  
Upper Heyford  
Oxfordshire  
OX25 5HD  
UK

Enquiries:

[info@everestbiotech.com](mailto:info@everestbiotech.com)

Sales:

[sales@everestbiotech.com](mailto:sales@everestbiotech.com)

Tech support:

[support@everestbiotech.com](mailto:support@everestbiotech.com)

Tel: +44 (0)1869 238326

Fax: +44 (0)1869 238327

## US Office

### Everest Biotech c/o Abcore

405 Maple Street, Suite A106  
Ramona,  
CA 92065  
USA

Inquiries:

[info@everestbiotech.com](mailto:info@everestbiotech.com)

Sales:

[usasales@everestbiotech.com](mailto:usasales@everestbiotech.com)

Tech support:

[support@everestbiotech.com](mailto:support@everestbiotech.com)

Tel: 888-320-4628 (toll-free)

Fax: 888-841-9041

[www.everestbiotech.com](http://www.everestbiotech.com)

**Research Use Only. Not for  
diagnostic or therapeutic use.**

## EB09504 - Goat Anti-NFATC3 / NFAT4 Antibody

Size: 100µg specific antibody in 200µl



### Target Protein

**Principal Names:** NFATC3, nuclear factor of activated T-cells, cytoplasmic, calcineurin-dependent 3, NFAT4, NFATX, T cell transcription factor NFAT4, nuclear factor of activated T-cells c3 isoform IE-Xa, nuclear factor of activated T-cells, cytoplasmic 3

**Official Symbol:** NFATC3

**Accession Number(s):** NP\_775188.1; NP\_004546.1; NP\_775186.1; NP\_775187.1

**Human GeneID(s):** [4775](#)

**Important Comments:** This antibody is expected to recognize all four reported isoforms (NP\_775188.1; NP\_004546.1; NP\_775186.1; NP\_775187.1).

### Immunogen

Peptide with sequence C-HQELDAHEDDLQIN, from the internal region (near N Terminus) of the protein sequence according to NP\_775188.1; NP\_004546.1; NP\_775186.1; NP\_775187.1.

Please note the [peptide](#) is available for sale.

### Purification and Storage

Purified from goat serum by ammonium sulphate precipitation followed by antigen affinity chromatography using the immunizing peptide.

Supplied at 0.5 mg/ml in Tris saline, 0.02% sodium azide, pH7.3 with 0.5% bovine serum albumin.

Aliquot and store at -20°C. Minimize freezing and thawing.

### Applications Tested

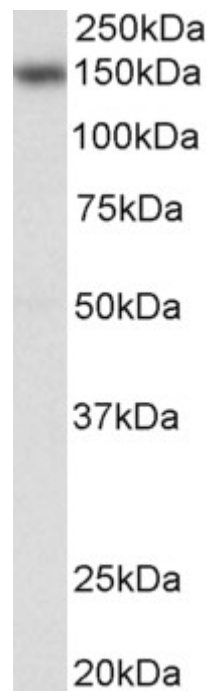
**Peptide ELISA:** antibody detection limit dilution 1:16000.

**Western blot:** Approx 150kDa band observed in nuclear lysates of cell line Jurkat (calculated MW of 116kDa according to NP\_775188.1). This molecular weight is routinely observed by other sources. Recommended concentration: 0.03-0.1µg/ml.

### Species Reactivity

**Tested:** Human

**Expected from sequence similarity:** Human, Dog, Cow



EB09504 (0.03µg/ml) staining of Jurkat nuclear lysate (35µg protein in RIPA buffer). Primary incubation was 1 hour. Detected by chemiluminescence.