



## UK Office

### Everest Biotech Ltd

Cherwell Innovation Centre  
77 Heyford Park  
Upper Heyford  
Oxfordshire  
OX25 5HD  
UK

Enquiries:

[info@everestbiotech.com](mailto:info@everestbiotech.com)

Sales:

[sales@everestbiotech.com](mailto:sales@everestbiotech.com)

Tech support:

[support@everestbiotech.com](mailto:support@everestbiotech.com)

Tel: +44 (0)1869 238326

Fax: +44 (0)1869 238327

## US Office

### Everest Biotech c/o Abcore

405 Maple Street, Suite A106  
Ramona,  
CA 92065  
USA

Inquiries:

[info@everestbiotech.com](mailto:info@everestbiotech.com)

Sales:

[usasales@everestbiotech.com](mailto:usasales@everestbiotech.com)

Tech support:

[support@everestbiotech.com](mailto:support@everestbiotech.com)

Tel: 888-320-4628 (toll-free)

Fax: 888-841-9041

[www.everestbiotech.com](http://www.everestbiotech.com)

**Research Use Only. Not for  
diagnostic or therapeutic use.**

## EB06839 - Goat Anti-NKG2D / KLRK1 Antibody

Size: 100µg specific antibody in 200µl



### Target Protein

**Principal Names:** KLRK1, NKG2-D, killer cell lectin-like receptor subfamily K, member 1, HGNC:18788, D12S2489E, KLR, NK cell receptor D, NKG2-D type II integral membrane protein, CD314, D12S2489E, FLJ17759, FLJ75772, NKG2D

**Official Symbol:** KLRK1

**Accession Number(s):** NP\_031386.2

**Human GeneID(s):** [22914](#)

### Immunogen

Peptide with sequence C-KVYSKEDQDLLK, from the internal region of the protein sequence according to NP\_031386.2.

Please note the [peptide](#) is available for sale.

### Purification and Storage

Purified from goat serum by ammonium sulphate precipitation followed by antigen affinity chromatography using the immunizing peptide.

Supplied at 0.5 mg/ml in Tris saline, 0.02% sodium azide, pH7.3 with 0.5% bovine serum albumin.

Aliquot and store at -20°C. Minimize freezing and thawing.

### Applications Tested

**Peptide ELISA:** antibody detection limit dilution 1:64000.

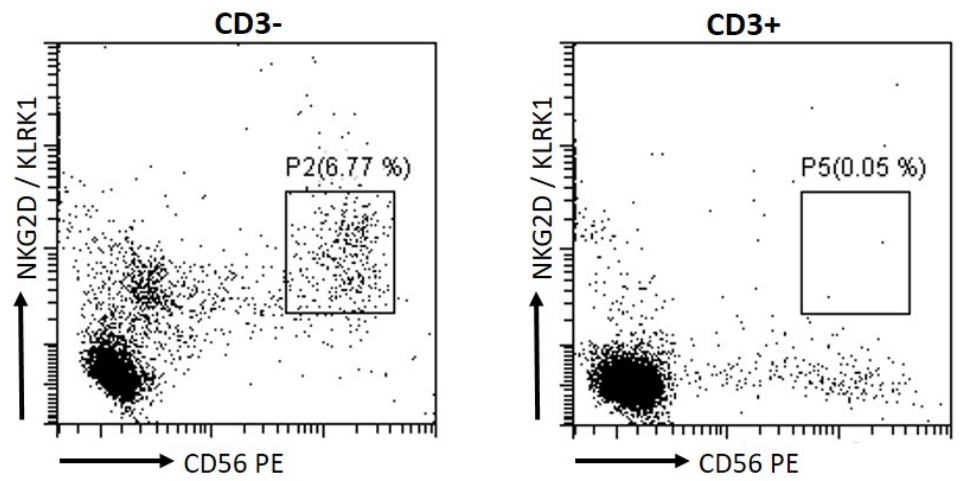
**Western blot:** Approx 36-37kDa band observed in lysates of cell line MOLT4 (calculated MW of 25.3kDa according to NP\_031386.2). This molecular weight is routinely observed by other sources, and was successfully blocked by incubation with the immunising peptide. Recommended concentration: 0.1-0.5µg/ml. Primary incubated 1 hour at room temperature.

**Flow Cytometry:** Flow cytometric analysis showing the expression of NKG2D on a subset of CD56<sup>+</sup>CD3<sup>+</sup> NK cells. Recommended concentration: 10ug/ml.

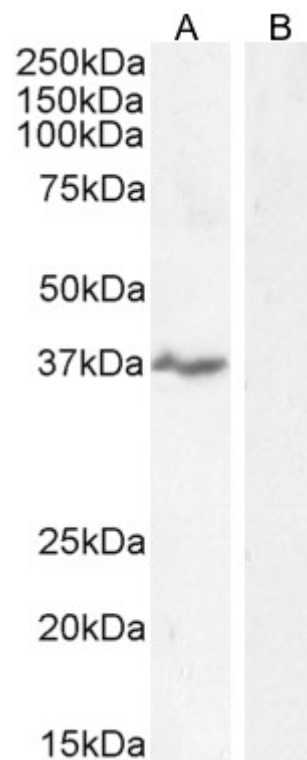
### Species Reactivity

**Tested:** Human

**Expected from sequence similarity:** Human, Mouse, Rat



EB06839 Flow cytometric analysis of human peripheral blood monocytes. Primary incubation 30 minutes (10ug/ml) followed by Alexa Fluor 488 secondary antibody (1ug/ml).



EB06839 staining (0.5ug/ml) of MOLT-4 cell lysate (A) + peptide (B). (35µg protein in RIPA buffer). Detected by chemiluminescence.