

UK Office

Everest Biotech Ltd

Cherwell Innovation Centre
77 Heyford Park
Upper Heyford
Oxfordshire
OX25 5HD
UK

Enquiries:

info@everestbiotech.com

Sales:

sales@everestbiotech.com

Tech support:

support@everestbiotech.com

Tel: +44 (0)1869 238326

www.everestbiotech.com

**Research Use Only. Not for
diagnostic or therapeutic use.**

EB12243 - Goat Anti-Nlrp12 (mouse) Antibody

Size: 100µg specific antibody in 200µl



Target Protein

Principal Names: Nlrp12, NLR family, pyrin domain containing 12, Nalp12, PYPAF7, NACHT, LRR and PYD containing protein 12, NACHT, LRR and PYD domains-containing protein 12, PYRIN-containing APAF1-like protein 7, monarch-1

Official Symbol: Nlrp12

Accession Number(s): NP_001028603.1

Non-Human GeneID(s): 378425 (mouse)

Immunogen

Peptide with sequence C-DDPPEPSGVQTQST, from the internal region of the protein sequence according to NP_001028603.1.

Please note the [peptide](#) is available for sale.

Purification and Storage

Purified from goat serum by ammonium sulphate precipitation followed by antigen affinity chromatography using the immunizing peptide.

Supplied at 0.5 mg/ml in Tris saline, 0.02% sodium azide, pH7.3 with 0.5% bovine serum albumin.

Aliquot and store at -20°C. Minimize freezing and thawing.

Applications Tested

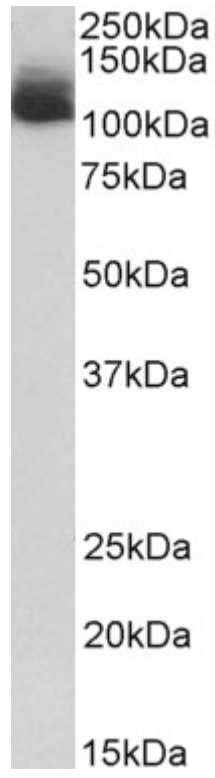
Peptide ELISA: antibody detection limit dilution 1:32000.

Western blot: Approx 110kDa band observed in Mouse Liver lysates (calculated MW of 119kDa according to NP_001028603.1). Recommended concentration: 1-3µg/ml.

Species Reactivity

Tested: Mouse

Expected from sequence similarity: Mouse



EB12243 (1 μ g/ml) staining of Mouse Liver lysate (35 μ g protein in RIPA buffer). Primary incubation was 1 hour.
Detected by chemiluminescence.