

UK Office

Everest Biotech Ltd

Cherwell Innovation Centre
77 Heyford Park
Upper Heyford
Oxfordshire
OX25 5HD
UK

Enquiries:

info@everestbiotech.com

Sales:

sales@everestbiotech.com

Tech support:

support@everestbiotech.com

Tel: +44 (0)1869 238326

www.everestbiotech.com

**Research Use Only. Not for
diagnostic or therapeutic use.**

EB09892 - Goat Anti-NLRX1 / NOD9 Antibody

Size: 100µg specific antibody in 200µl



Target Protein

Principal Names: CLR11.3, DLNB26, FLJ21478, MGC131937, MGC21025, NLR family member X1, NLR family, X1, NOD26, NOD5, NOD9, NOD-like receptor X1, OTTHUMP00000205768, OTTHUMP00000205769, NLRX1

Official Symbol: NLRX1

Accession Number(s): NP_078894.2; NP_733840.1

Human GeneID(s): [79671](#)

Important Comments: This antibody is expected to recognize both reported isoforms (NP_078894.2; NP_733840.1).

Immunogen

Peptide with sequence C-NFSGETLDSTDPNS, from the internal region of the protein sequence according to NP_078894.2; NP_733840.1.

Please note the [peptide](#) is available for sale.

Purification and Storage

Purified from goat serum by ammonium sulphate precipitation followed by antigen affinity chromatography using the immunizing peptide.

Supplied at 0.5 mg/ml in Tris saline, 0.02% sodium azide, pH7.3 with 0.5% bovine serum albumin.

Aliquot and store at -20°C. Minimize freezing and thawing.

Applications Tested

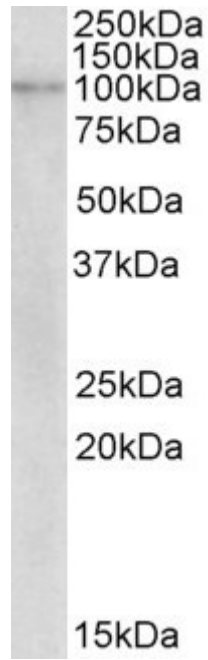
Peptide ELISA: antibody detection limit dilution 1:16000.

Western blot: Approx 100kDa band observed in Human Breast cancer lysates (calculated MW of 108kDa according to NP_078894.2 and 102kDa according to NP_733840.1). Recommended concentration: 1-3µg/ml.

Species Reactivity

Tested: Human

Expected from sequence similarity: Human, Rat



EB09892 (2 μ g/ml) staining of Human Breast cancer lysate (35 μ g protein in RIPA buffer). Primary incubation was 1 hour. Detected by chemiluminescence.