



UK Office

Everest Biotech Ltd

Cherwell Innovation Centre
77 Heyford Park
Upper Heyford
Oxfordshire
OX25 5HD
UK

Enquiries:

info@everestbiotech.com

Sales:

sales@everestbiotech.com

Tech support:

support@everestbiotech.com

Tel: +44 (0)1869 238326

Fax: +44 (0)1869 238327

US Office

Everest Biotech c/o Abcore

405 Maple Street, Suite A106
Ramona,
CA 92065
USA

Inquiries:

info@everestbiotech.com

Sales:

usasales@everestbiotech.com

Tech support:

support@everestbiotech.com

Tel: 888-320-4628 (toll-free)

Fax: 888-841-9041

www.everestbiotech.com

**Research Use Only. Not for
diagnostic or therapeutic use.**

EB07341 - Goat Anti-NMDA receptor 1 / GRIN1 Antibody

Size: 100µg specific antibody in 200µl



Target Protein

Principal Names: GRIN1, NMDA receptor 1, glutamate receptor, ionotropic, N-methyl D-aspartate 1, NMDA1, NMDAR1, NR1, N-methyl-D-aspartate receptor channel, subunit zeta-1, glutamate [NMDA] receptor subunit zeta 1

Official Symbol: GRIN1

Accession Number(s): NP_000823.4; NP_067544.1; NP_015566.1

Human GeneID(s): [2902](#)

Non-Human GeneID(s): 14810 (mouse), 24408 (rat)

Important Comments: This antibody is expected to recognise all three reported isoforms (NP_000823.4; NP_067544.1; NP_015566.1).

Immunogen

Peptide with sequence C-TQERVNNSNKKE, from the internal region of the protein sequence according to NP_000823.4; NP_067544.1; NP_015566.1.

Please note the [peptide](#) is available for sale.

Purification and Storage

Purified from goat serum by ammonium sulphate precipitation followed by antigen affinity chromatography using the immunizing peptide.

Supplied at 0.5 mg/ml in Tris saline, 0.02% sodium azide, pH7.3 with 0.5% bovine serum albumin.

Aliquot and store at -20°C. Minimize freezing and thawing.

Applications Tested

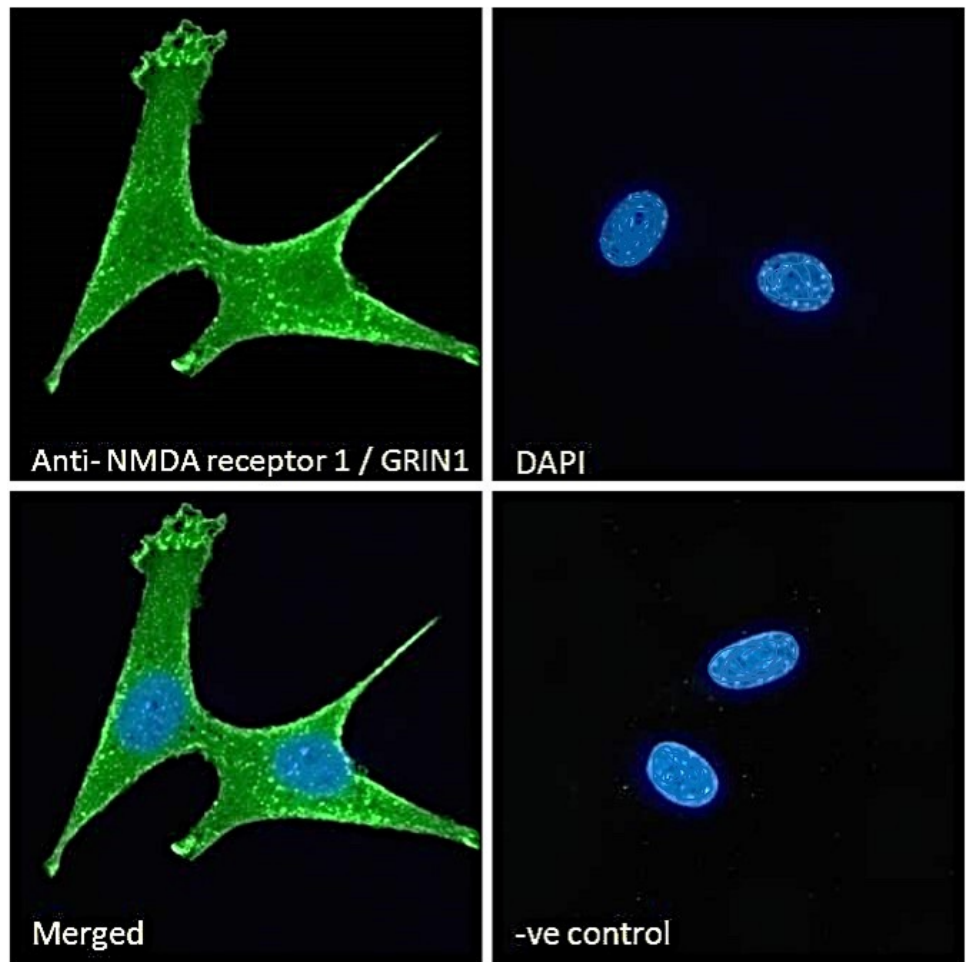
Peptide ELISA: antibody detection limit dilution 1:32000.

Immunofluorescence: Strong expression of the protein seen in the membrane and cytoplasm of MCF7 and NIH3T3 cells. Recommended concentration: 10µg/ml.

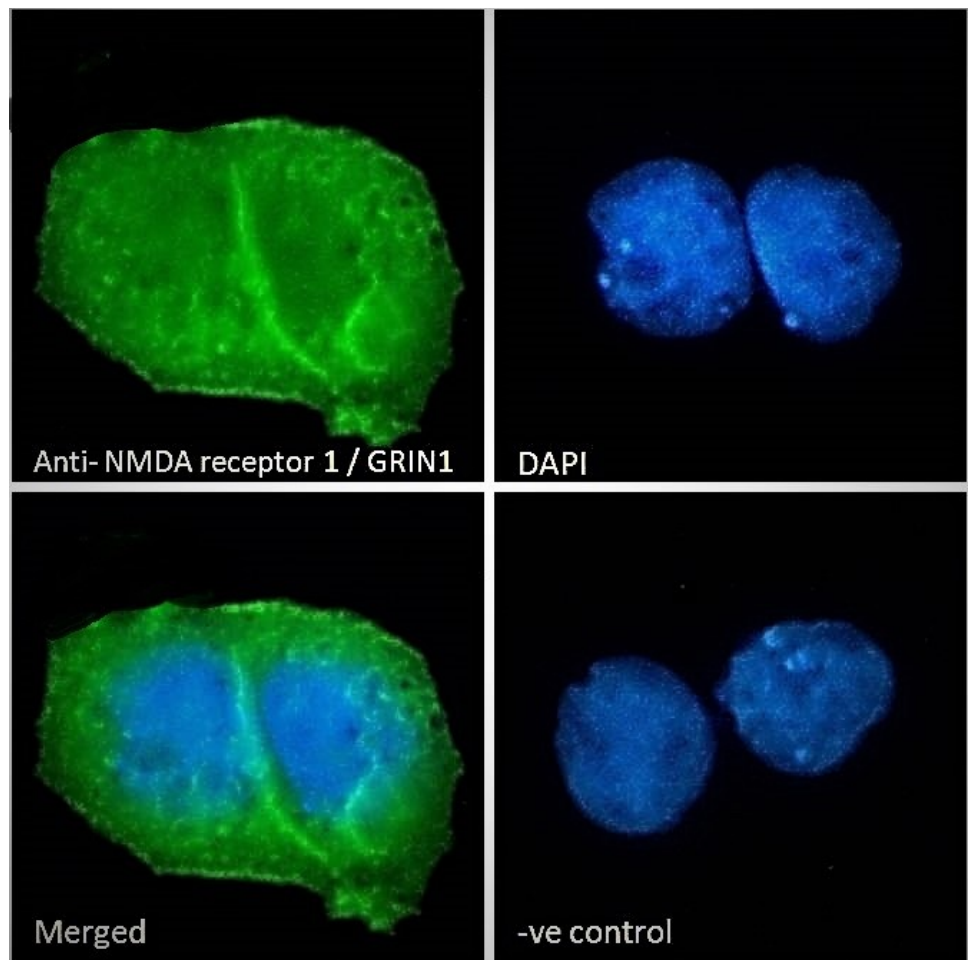
Species Reactivity

Tested: Human, Mouse

Expected from sequence similarity: Human, Mouse, Rat, Dog



EB07341 Immunofluorescence analysis of paraformaldehyde fixed NIH3T3 cells, permeabilized with 0.15% Triton. Primary incubation 1hr (10ug/ml) followed by Alexa Fluor 488 secondary antibody (2ug/ml), showing plasma membrane and cytoplasmic staining. The nuclear stain is DAPI (blue). Negative control: Unimmunized goat IgG (10ug/ml) followed by Alexa Fluor 488 secondary antibody (2ug/ml).



EB07341 Immunofluorescence analysis of paraformaldehyde fixed MCF7 cells, permeabilized with 0.15% Triton. Primary incubation 1hr (10ug/ml) followed by Alexa Fluor 488 secondary antibody (2ug/ml), showing plasma membrane and cytoplasmic staining. The nuclear stain is DAPI (blue). Negative control: Unimmunized goat IgG (10ug/ml) followed by Alexa Fluor 488 secondary antibody (2ug/ml).