



## UK Office

### Everest Biotech Ltd

Cherwell Innovation Centre  
77 Heyford Park  
Upper Heyford  
Oxfordshire  
OX25 5HD  
UK

Enquiries:

[info@everestbiotech.com](mailto:info@everestbiotech.com)

Sales:

[sales@everestbiotech.com](mailto:sales@everestbiotech.com)

Tech support:

[support@everestbiotech.com](mailto:support@everestbiotech.com)

Tel: +44 (0)1869 238326

[www.everestbiotech.com](http://www.everestbiotech.com)

**Research Use Only. Not for  
diagnostic or therapeutic use.**

## EB07294 - Goat Anti-NMDAR2B / GRIN2B Antibody

Size: 100µg specific antibody in 200µl



### Target Protein

**Principal Names:** GRIN2B, NMDAR2B, glutamate receptor, ionotropic, N-methyl D-aspartate 2B, HGNC:4586, NR2B, hNR3, N-methyl-D-aspartate receptor subunit 2B

**Official Symbol:** GRIN2B

**Accession Number(s):** NP\_000825.1

**Human GeneID(s):** [2904](#)

**Non-Human GeneID(s):** 14812 (mouse), 24410 (rat)

### Immunogen

Peptide with sequence C-KDAHEKDDFHLS, from the internal region of the protein sequence according to NP\_000825.1.

Please note the [peptide](#) is available for sale.

### Purification and Storage

Purified from goat serum by ammonium sulphate precipitation followed by antigen affinity chromatography using the immunizing peptide.

Supplied at 0.5 mg/ml in Tris saline, 0.02% sodium azide, pH7.3 with 0.5% bovine serum albumin.

Aliquot and store at -20°C. Minimize freezing and thawing.

### Applications Tested

**Peptide ELISA:** antibody detection limit dilution 1:16000.

**Western blot:** Approx 170kDa band observed in Rat Brain lysates (calculated MW of 166kDa according to NP\_000825.1). Recommended concentration: 2-4µg/ml. Primary incubation was 1 hour.

**Immunofluorescence:** Strong expression of the protein seen in the cytoskeleton/ cytoplasm of HeLa cells. Recommended concentration: 10µg/ml.

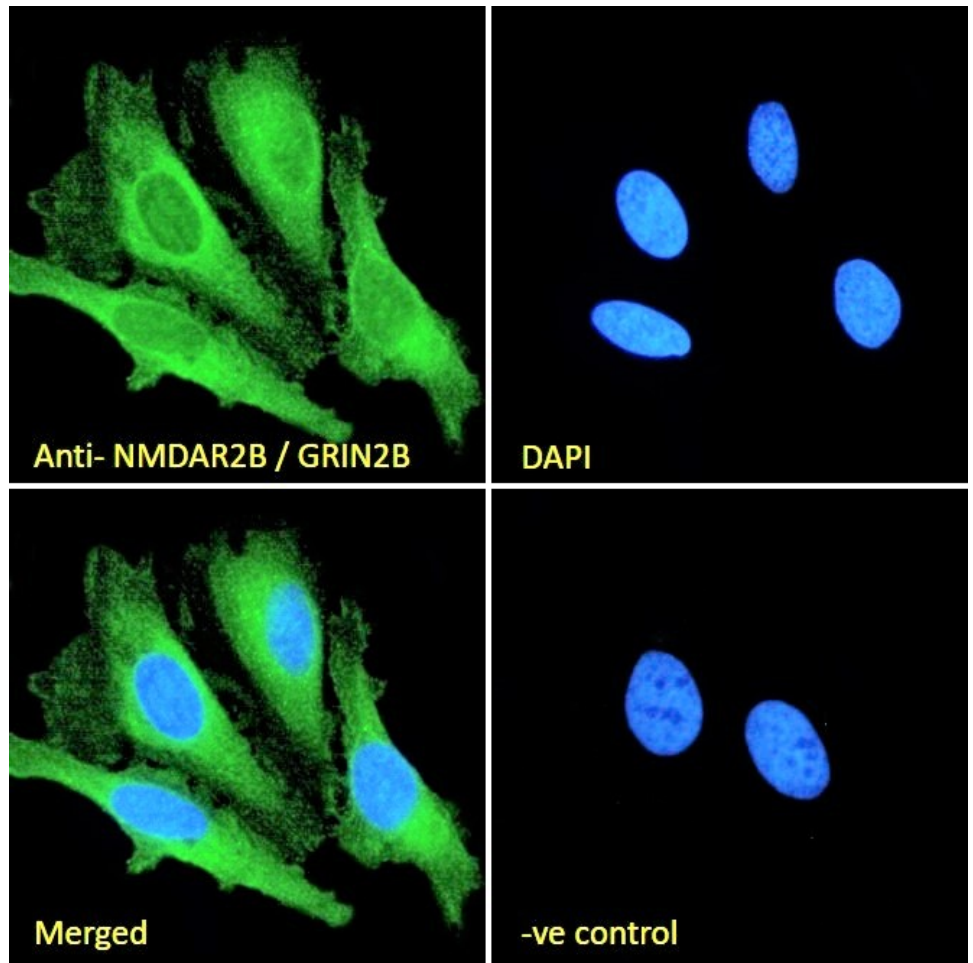
### Species Reactivity

**Tested:** Human, Rat

**Expected from sequence similarity:** Human, Mouse, Rat, Dog

250kDa  
150kDa  
100kDa  
75kDa  
50kDa  
37kDa  
25kDa  
20kDa  
15kDa  
10kDa

EB07294 (2µg/ml) staining of Rat Brain lysate (35µg protein in RIPA buffer). Detected by chemiluminescence.



EB07294 Immunofluorescence analysis of paraformaldehyde fixed HeLa cells, permeabilized with 0.15% Triton. Primary incubation 1hr (10ug/ml) followed by Alexa Fluor 488 secondary antibody (2ug/ml), showing cytoskeleton and cytoplasmic staining. The nuclear stain is DAPI (blue). Negative control: Unimmunized goat IgG (10ug/ml) followed by Alexa Fluor 488 secondary antibody (2ug/ml).