



UK Office

Everest Biotech Ltd

Cherwell Innovation Centre
77 Heyford Park
Upper Heyford
Oxfordshire
OX25 5HD
UK

Enquiries:

info@everestbiotech.com

Sales:

sales@everestbiotech.com

Tech support:

support@everestbiotech.com

Tel: +44 (0)1869 238326

Fax: +44 (0)1869 238327

US Office

Everest Biotech c/o Abcore

405 Maple Street, Suite A106
Ramona,
CA 92065
USA

Inquiries:

info@everestbiotech.com

Sales:

usasales@everestbiotech.com

Tech support:

support@everestbiotech.com

Tel: 888-320-4628 (toll-free)

Fax: 888-841-9041

www.everestbiotech.com

**Research Use Only. Not for
diagnostic or therapeutic use.**

EB08091 - Goat Anti-NODAL Antibody

Size: 100µg specific antibody in 200µl



Target Protein

Principal Names: NODAL, nodal growth differentiation factor, HTX5, ,

Official Symbol: NODAL

Accession Number(s): NP_060525.2

Human GeneID(s): [4838](#)

Immunogen

Peptide with sequence DRSQLCRKVKFQ, from the internal region of the protein sequence according to NP_060525.2.

Please note the [peptide](#) is available for sale.

Purification and Storage

Purified from goat serum by ammonium sulphate precipitation followed by antigen affinity chromatography using the immunizing peptide.

Supplied at 0.5 mg/ml in Tris saline, 0.02% sodium azide, pH7.3 with 0.5% bovine serum albumin.

Aliquot and store at -20°C. Minimize freezing and thawing.

Applications Tested

Peptide ELISA: antibody detection limit dilution 1:64000.

Western blot: Approx 40kDa band observed in Rat Brain lysates (calculated MW of 40.5kDa according to NP_001099864.1). Recommended concentration: 0.01-0.1µg/ml.

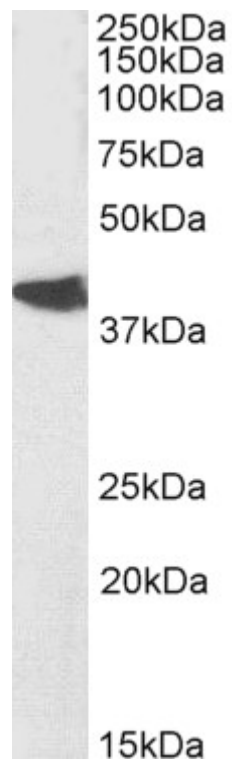
Primary incubation was 1 hour. Preliminary testing was unsuccessful on Mouse Brain for this particular batch.

IHC: Paraffin embedded Human Placenta and Brain (Cortex). Recommended concentration: 3.75µg/ml.

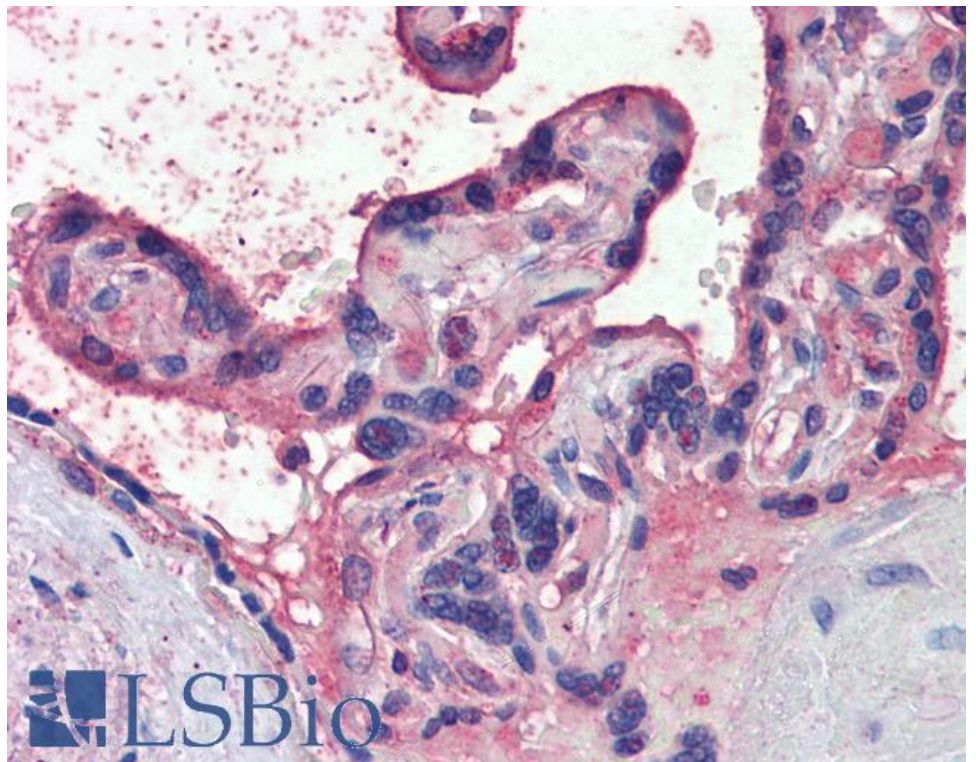
Species Reactivity

Tested: Human, Rat

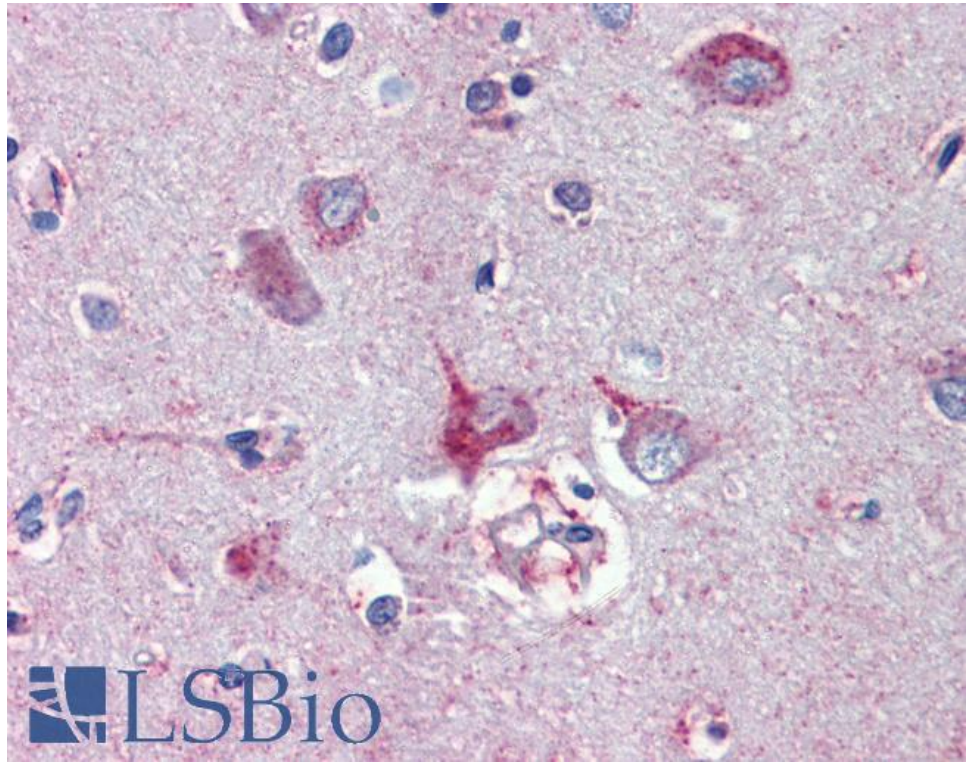
Expected from sequence similarity: Human, Mouse, Rat



EB08091 (0.03 μ g/ml) staining of Rat Brain lysate (35 μ g protein in RIPA buffer). Detected by chemiluminescence.



EB08091 (3.75 μ g/ml) staining of paraffin embedded Human Placenta. Steamed antigen retrieval with citrate buffer pH 6, AP-staining.



EB08091 (3.75µg/ml) staining of paraffin embedded Human Cortex. Steamed antigen retrieval with citrate buffer pH 6, AP-staining.