



UK Office

Everest Biotech Ltd

Cherwell Innovation Centre
77 Heyford Park
Upper Heyford
Oxfordshire
OX25 5HD
UK

Enquiries:

info@everestbiotech.com

Sales:

sales@everestbiotech.com

Tech support:

support@everestbiotech.com

Tel: +44 (0)1869 238326

www.everestbiotech.com

**Research Use Only. Not for
diagnostic or therapeutic use.**

EB10343 - Goat Anti-NOLC1 Antibody

Size: 100µg specific antibody in 200µl



Target Protein

Principal Names: HCV NS5A trans-regulated protein 13, KIAA0035, NOPP130, NOPP140, NS5ATP13, nucleolar and coiled-body phosphoprotein 1, nucleolar and coiled-body phosphoprotein 1, nucleolar phosphoprotein p130, nucleolar protein p130, P130, NOLC1

Official Symbol: NOLC1

Accession Number(s): NP_004732.2

Human GeneID(s): [9221](#)

Non-Human GeneID(s): 70769 (mouse), 64896 (rat)

Immunogen

Peptide with sequence C-QVNSIKFDSE, from the internal region of the protein sequence according to NP_004732.2.

Please note the [peptide](#) is available for sale.

Purification and Storage

Purified from goat serum by ammonium sulphate precipitation followed by antigen affinity chromatography using the immunizing peptide.

Supplied at 0.5 mg/ml in Tris saline, 0.02% sodium azide, pH7.3 with 0.5% bovine serum albumin.

Aliquot and store at -20°C. Minimize freezing and thawing.

Applications Tested

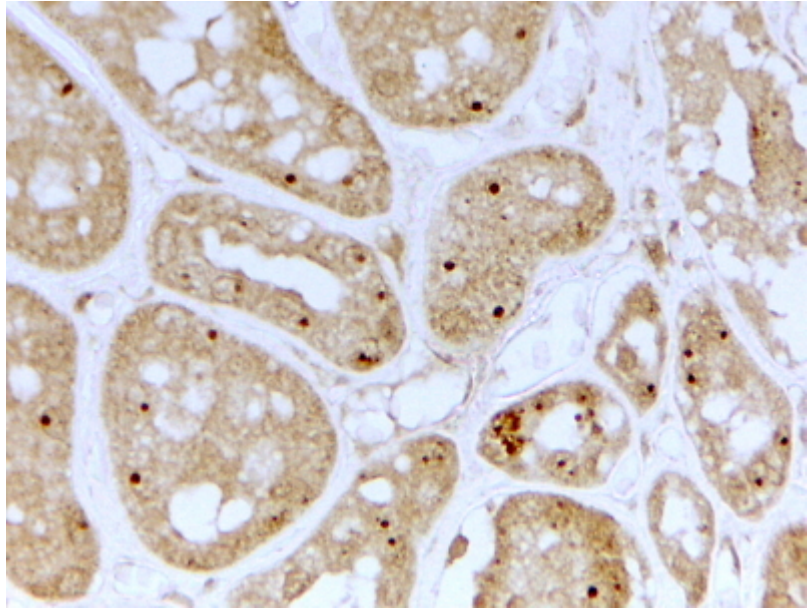
Peptide ELISA: antibody detection limit dilution 1:16000.

IHC: In paraffin embedded Human Kidney shows strong nucleolar staining in convoluted tubules. Recommended concentration, 2-4µg/ml.

Species Reactivity

Tested: Human

Expected from sequence similarity: Human, Mouse, Rat, Dog, Cow



EB10343 (2 μ g/ml) staining of paraffin embedded Human Kidney. Steamed antigen retrieval with citrate buffer pH 6, HRP-staining.