



## UK Office

### Everest Biotech Ltd

Cherwell Innovation Centre  
77 Heyford Park  
Upper Heyford  
Oxfordshire  
OX25 5HD  
UK

Enquiries:

[info@everestbiotech.com](mailto:info@everestbiotech.com)

Sales:

[sales@everestbiotech.com](mailto:sales@everestbiotech.com)

Tech support:

[support@everestbiotech.com](mailto:support@everestbiotech.com)

Tel: +44 (0)1869 238326

Fax: +44 (0)1869 238327

## US Office

### Everest Biotech c/o Abcore

405 Maple Street, Suite A106  
Ramona,  
CA 92065  
USA

Inquiries:

[info@everestbiotech.com](mailto:info@everestbiotech.com)

Sales:

[usasales@everestbiotech.com](mailto:usasales@everestbiotech.com)

Tech support:

[support@everestbiotech.com](mailto:support@everestbiotech.com)

Tel: 888-320-4628 (toll-free)

Fax: 888-841-9041

[www.everestbiotech.com](http://www.everestbiotech.com)

**Research Use Only. Not for  
diagnostic or therapeutic use.**

## EB07246 - Goat Anti-NONO / p54NRB Antibody

Size: 100µg specific antibody in 200µl



### Target Protein

**Principal Names:** NONO, P54NRB, non-POU domain containing, octamer-binding, HGNC:7871, NMT55, NRB54, P54, Nuclear RNA-binding protein, 54-kD, non-POU-domain-containing, octamer-binding, non-Pou domain-containing octamer (ATGCAAAT) binding protein

**Official Symbol:** NONO

**Accession Number(s):** NP\_031389.3

**Human GeneID(s):** [4841](#)

**Non-Human GeneID(s):** 53610 (mouse), 317259 (rat)

### Immunogen

Peptide with sequence C-NRAAPGAEFAPNK, from the C Terminus of the protein sequence according to NP\_031389.3.

Please note the [peptide](#) is available for sale.

### Purification and Storage

Purified from goat serum by ammonium sulphate precipitation followed by antigen affinity chromatography using the immunizing peptide.

Supplied at 0.5 mg/ml in Tris saline, 0.02% sodium azide, pH7.3 with 0.5% bovine serum albumin.

Aliquot and store at -20°C. Minimize freezing and thawing.

### Applications Tested

**Peptide ELISA:** antibody detection limit dilution 1:16000.

**Western blot:** Approx 60kDa band observed in Mouse Brain lysates (calculated MW of 54.2kDa according to Human NP\_031389.3 and 54.5kDa according to Mouse NP\_075633.2). Recommended concentration: 0.1-0.3µg/ml.

**IHC:** Paraffin embedded Human Spleen and Testis. Recommended concentration: 3.75µg/ml.

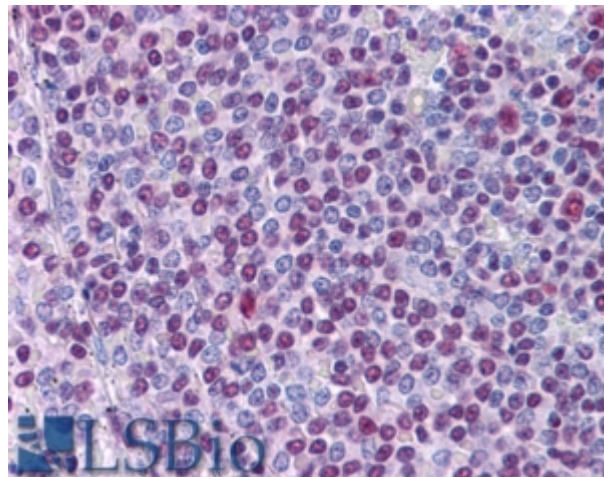
### Species Reactivity

**Tested:** Human, Mouse

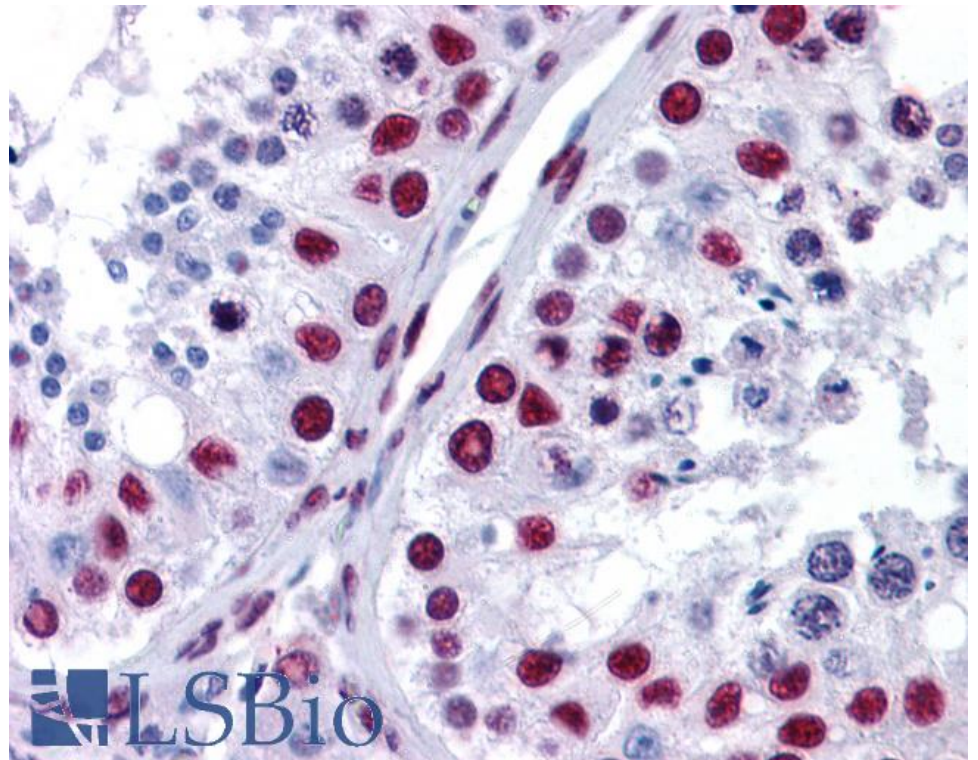
**Expected from sequence similarity:** Human, Mouse, Rat, Dog



EB07246 (0.1µg/ml) staining of Mouse Brain lysate (35µg protein in RIPA buffer). Primary incubation was 1 hour.  
Detected by chemiluminescence.



EB07246 (3.75µg/ml) staining of paraffin embedded Human Spleen. Steamed antigen retrieval with citrate buffer pH 6, AP-staining.



EB07246 (3.75µg/ml) staining of paraffin embedded Human Testis. Steamed antigen retrieval with citrate buffer pH 6, AP-staining.