

UK Office

Everest Biotech Ltd

Cherwell Innovation Centre
77 Heyford Park
Upper Heyford
Oxfordshire
OX25 5HD
UK

Enquiries:

info@everestbiotech.com

Sales:

sales@everestbiotech.com

Tech support:

support@everestbiotech.com

Tel: +44 (0)1869 238326

www.everestbiotech.com

**Research Use Only. Not for
diagnostic or therapeutic use.**

EB08387 - Goat Anti-NOVA1 Antibody

Size: 100µg specific antibody in 200µl



Target Protein

Principal Names: NOVA1, neuro-oncological ventral antigen 1, Nova-1, paraneoplastic Ri antigen, ventral neuron-specific protein 1

Official Symbol: NOVA1

Accession Number(s): NP_002506.2 ; NP_006480.2 ; NP_006482.1

Human GeneID(s): [4857](#)

Important Comments: This antibody is expected to recognise all three reported isoforms (NP_002506.2 ; NP_006480.2 ; NP_006482.1)

Immunogen

Peptide with sequence C-REMPQNVAKTEPVVS, from the internal region of the protein sequence according to NP_002506.2 ; NP_006480.2 ; NP_006482.1.

Please note the [peptide](#) is available for sale.

Purification and Storage

Purified from goat serum by ammonium sulphate precipitation followed by antigen affinity chromatography using the immunizing peptide.

Supplied at 0.5 mg/ml in Tris saline, 0.02% sodium azide, pH7.3 with 0.5% bovine serum albumin.

Aliquot and store at -20°C. Minimize freezing and thawing.

Applications Tested

Peptide ELISA: antibody detection limit dilution 1:64000.

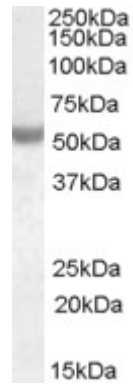
Western blot: Approx 50-55kDa band observed in Human Breast Cancer lysates (calculated MW of 51.7kDa according to NP_002506.2). In transfected HEK293 transiently expressing NOVA1 a band of approx. 52kDa is observed. This band is not observed in the non-transfected HEK293. Recommended concentration: 0.01-0.03µg/ml. Primary incubation was 1 hour.

IHC: Paraffin embedded Human Brain (Cortex) and Heart. Recommended concentration: 5µg/ml.

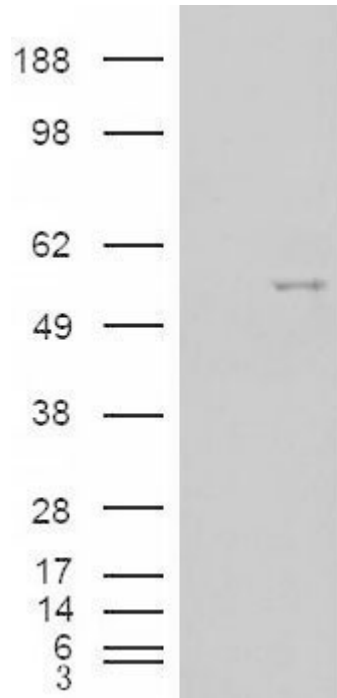
Species Reactivity

Tested: Human

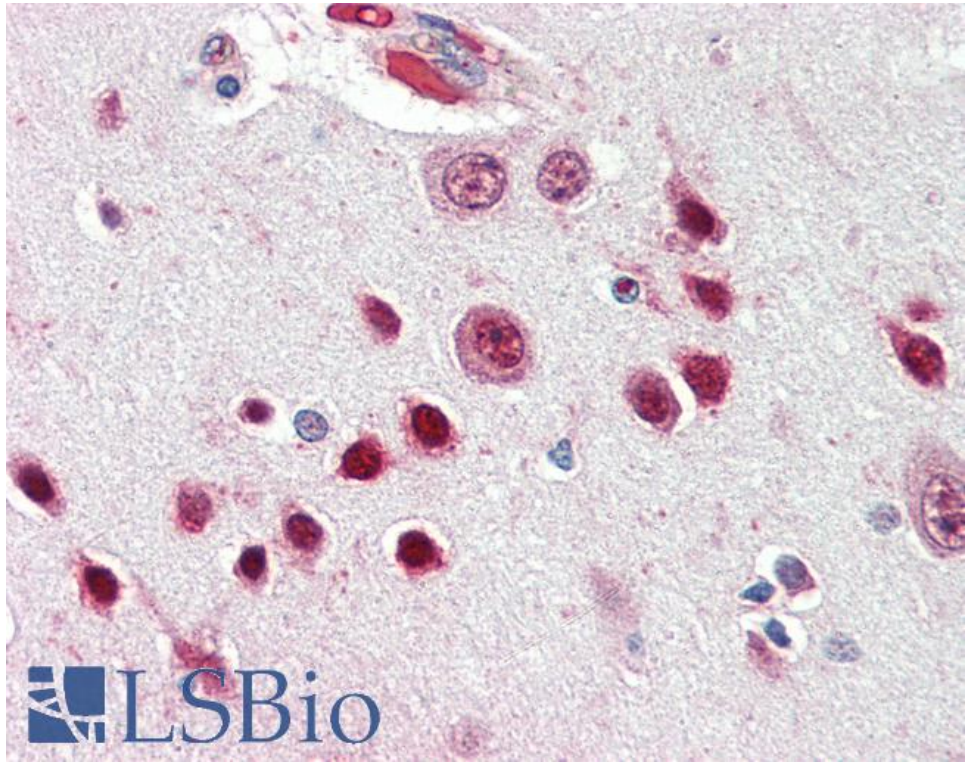
Expected from sequence similarity: Human



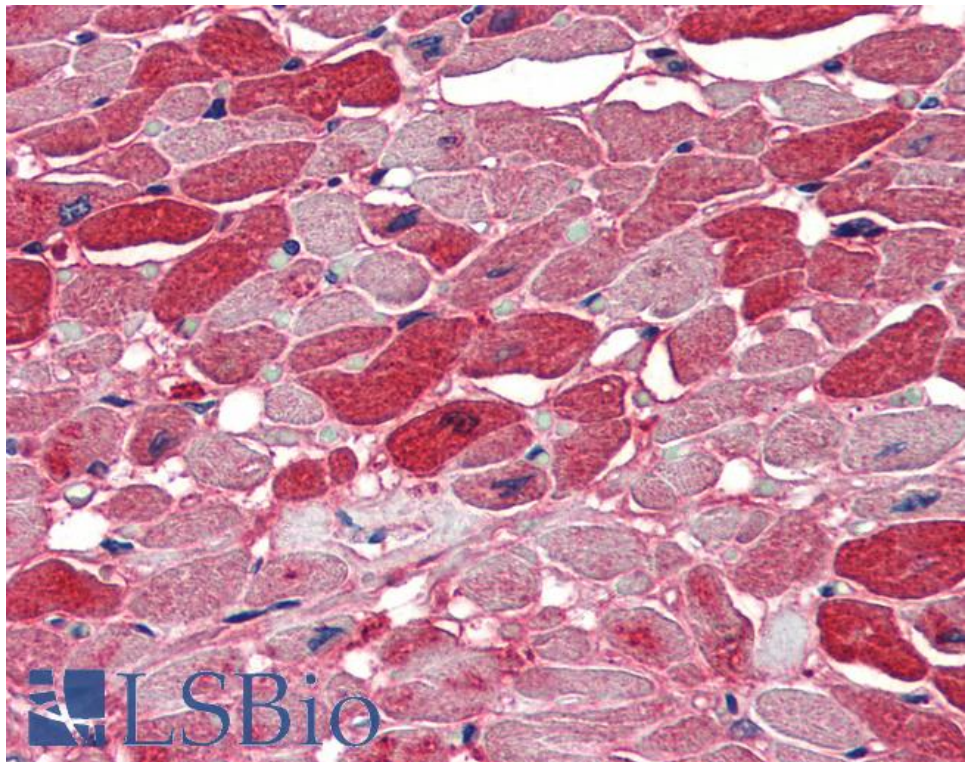
EB08387 (0.01µg/ml) staining of Human Breast Cancer lysate (35µg protein in RIPA buffer). Detected by chemiluminescence.



HEK293 overexpressing NOVA1 (RC210407) and probed with EB08387 (mock transfection in first lane), tested by Origene.



EB08387 (5µg/ml) staining of paraffin embedded Human Cortex. Steamed antigen retrieval with citrate buffer pH 6, AP-staining.



EB08387 (5µg/ml) staining of paraffin embedded Human Heart. Steamed antigen retrieval with citrate buffer pH 6, AP-staining.