



## UK Office

### Everest Biotech Ltd

Cherwell Innovation Centre  
77 Heyford Park  
Upper Heyford  
Oxfordshire  
OX25 5HD  
UK

Enquiries:

[info@everestbiotech.com](mailto:info@everestbiotech.com)

Sales:

[sales@everestbiotech.com](mailto:sales@everestbiotech.com)

Tech support:

[support@everestbiotech.com](mailto:support@everestbiotech.com)

Tel: +44 (0)1869 238326

Fax: +44 (0)1869 238327

## US Office

### Everest Biotech c/o Abcore

405 Maple Street, Suite A106  
Ramona,  
CA 92065  
USA

Inquiries:

[info@everestbiotech.com](mailto:info@everestbiotech.com)

Sales:

[usasales@everestbiotech.com](mailto:usasales@everestbiotech.com)

Tech support:

[support@everestbiotech.com](mailto:support@everestbiotech.com)

Tel: 888-320-4628 (toll-free)

Fax: 888-841-9041

[www.everestbiotech.com](http://www.everestbiotech.com)

**Research Use Only. Not for  
diagnostic or therapeutic use.**

## EB10585 - Goat Anti-NOX5 Antibody

Size: 100µg specific antibody in 200µl



### Target Protein

**Principal Names:** NOX5, NADPH oxidase, EF-hand calcium binding domain 5, MGC149776, MGC149777, NADPH oxidase 5, OTTHUMP00000164443, OTTHUMP00000164444

**Official Symbol:** NOX5

**Accession Number(s):** NP\_078781.3; NP\_001171708.1; NP\_001171709.1

**Human GeneID(s):** [79400](#)

**Important Comments:** This antibody is expected to recognize all reported isoforms (NP\_078781.3; NP\_001171708.1; NP\_001171709.1).

### Immunogen

Peptide with sequence C-EWHPFTISSAPEQKD, from the internal region of the protein sequence according to NP\_078781.3; NP\_001171708.1; NP\_001171709.1.

Please note the [peptide](#) is available for sale.

### Purification and Storage

Purified from goat serum by ammonium sulphate precipitation followed by antigen affinity chromatography using the immunizing peptide.

Supplied at 0.5 mg/ml in Tris saline, 0.02% sodium azide, pH7.3 with 0.5% bovine serum albumin.

Aliquot and store at -20°C. Minimize freezing and thawing.

### Applications Tested

**Peptide ELISA:** antibody detection limit dilution 1:8000.

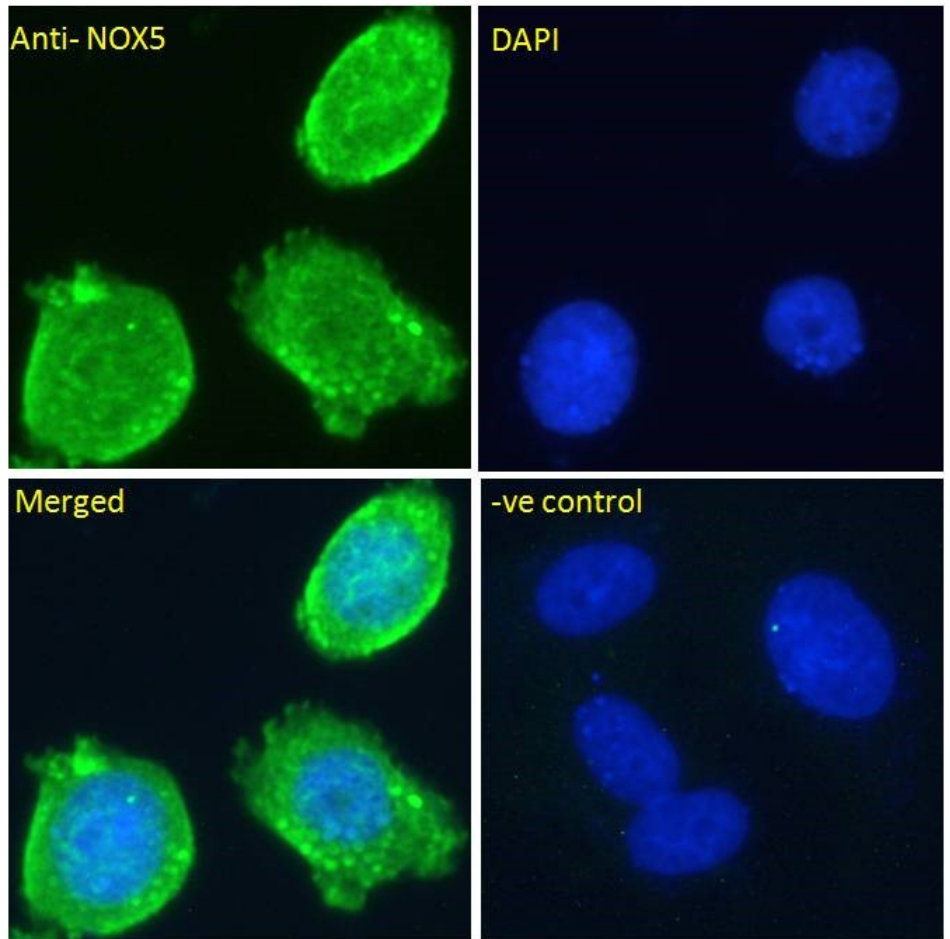
**Western blot:** Approx 90kDa band observed in Human Testis lysates (calculated MW of 86.4kDa according to NP\_078781.3). Recommended concentration: 0.5-2µg/ml. Primary incubation 1 hour at room temperature.

**Immunofluorescence:** Strong expression of the protein seen in the plasma membrane and cytoplasm of HeLa and MCF7 cells. Recommended concentration: 10ug/ml.

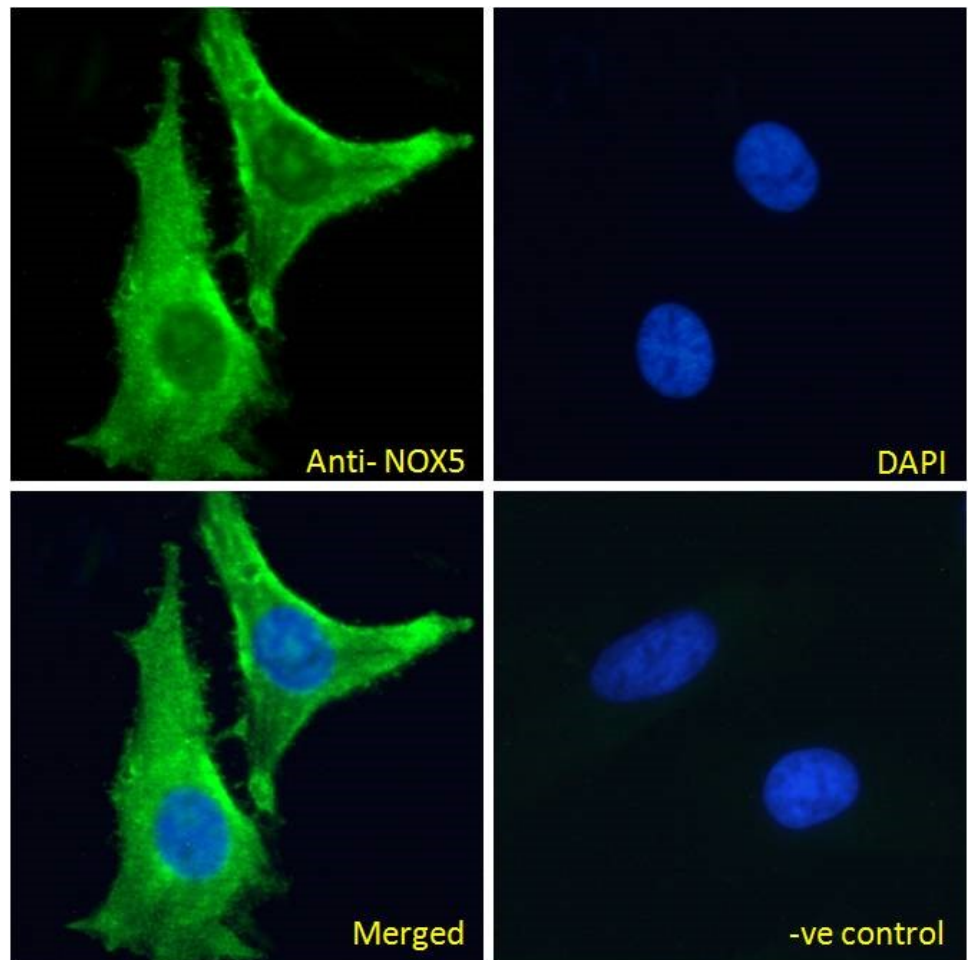
### Species Reactivity

**Tested:** Human

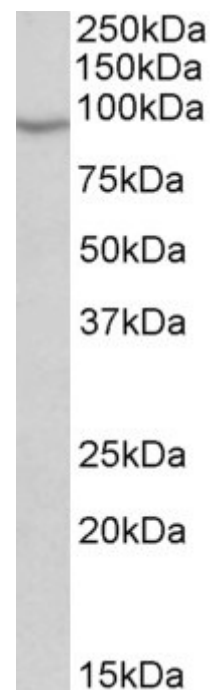
**Expected from sequence similarity:** Human, Dog, Cow



EB10585 Immunofluorescence analysis of paraformaldehyde fixed MCF7 cells, permeabilized with 0.15% Triton. Primary incubation 1hr (10ug/ml) followed by Alexa Fluor 488 secondary antibody (2ug/ml), showing staining within the cytoplasm and plasma membrane . The nuclear stain is DAPI (blue).Negative control: Unimmunized goat IgG (10ug/ml) followed by Alexa Fluor 488 secondary antibody (2ug/ml).



EB10585 Immunofluorescence analysis of paraformaldehyde fixed HeLa cells, permeabilized with 0.15% Triton. Primary incubation 1hr (10ug/ml) followed by Alexa Fluor 488 secondary antibody (2ug/ml), showing staining within the cytoplasm and plasma membrane . The nuclear stain is DAPI (blue). Negative control: Unimmunized goat IgG (10ug/ml) followed by Alexa Fluor 488 secondary antibody (2ug/ml).



EB10585 (0.5µg/ml) staining of Human Testis lysate (35µg protein in RIPA buffer). Detected by chemiluminescence.