

UK Office

Everest Biotech Ltd

Cherwell Innovation Centre
77 Heyford Park
Upper Heyford
Oxfordshire
OX25 5HD
UK

Enquiries:

info@everestbiotech.com

Sales:

sales@everestbiotech.com

Tech support:

support@everestbiotech.com

Tel: +44 (0)1869 238326

www.everestbiotech.com

**Research Use Only. Not for
diagnostic or therapeutic use.**

EB11193 - Goat Anti-Nprl3 (mouse) Antibody

Size: 100µg specific antibody in 200µl



Target Protein

Principal Names: -14, nitrogen permease regulator-like 3 (*S. cerevisiae*), Aag, alpha globin regulatory element containing, alpha-globin regulatory element-containing gene protein, CGTHBA, HS-26, HS-40, m(alpha)RE, Mare, nitrogen permease regulator 3-like protein, OTTMUSP00000034624, Phg, Prox1, proximal locus to the hemoglobin alpha chain complex, RP23-177M10.6, Nprl3

Official Symbol: Nprl3

Accession Number(s): NP_853547.1

Human GeneID(s): [8131](#)

Non-Human GeneID(s): 17168 (mouse), 360505 (rat)

Immunogen

Peptide with sequence C-QRSQEH PASQTNKP, from the internal region (N Terminus) of the protein sequence according to NP_853547.1.

Please note the [peptide](#) is available for sale.

Purification and Storage

Purified from goat serum by ammonium sulphate precipitation followed by antigen affinity chromatography using the immunizing peptide.

Supplied at 0.5 mg/ml in Tris saline, 0.02% sodium azide, pH7.3 with 0.5% bovine serum albumin.

Aliquot and store at -20°C. Minimize freezing and thawing.

Applications Tested

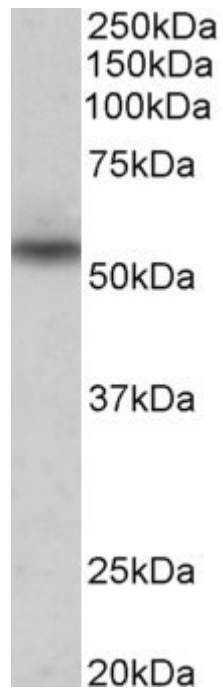
Peptide ELISA: antibody detection limit dilution 1:16000.

Western blot: Approx 55kDa band observed in Human Heart lysates (calculated MW of 63.6kDa according to NP_853547.1). Recommended concentration: 0.3-1µg/ml. Primary incubation was 1 hour. Preliminary testing was unsuccessful on Mouse and Rat for this particular batch.

Species Reactivity

Tested: Human

Expected from sequence similarity: Human, Mouse, Rat



EB11193 (0.3 μ g/ml) staining of Human Heart lysate (35 μ g protein in RIPA buffer). Detected by chemiluminescence.