

UK Office

Everest Biotech Ltd

Cherwell Innovation Centre
77 Heyford Park
Upper Heyford
Oxfordshire
OX25 5HD
UK

Enquiries:

info@everestbiotech.com

Sales:

sales@everestbiotech.com

Tech support:

support@everestbiotech.com

Tel: +44 (0)1869 238326

www.everestbiotech.com

**Research Use Only. Not for
diagnostic or therapeutic use.**

EB07639 - Goat Anti-Npy2r (mouse) Antibody

Size: 100µg specific antibody in 200µl



Target Protein

Principal Names: NPY2R, neuropeptide Y receptor Y2, MGC124241, MGC124242, MGC124244, NPY-Y2 receptor, NPY2-R

Official Symbol: Npy2r

Accession Number(s): NP_032757.1

Human GeneID(s): [4887](#)

Non-Human GeneID(s): 18167 (mouse), 66024 (rat)

Important Comments: Please note this antibody was designed using the Mouse sequence NP_032757.1, which differs by 1 amino acid from the Human sequence NP_000901.1.

Immunogen

Peptide with sequence C-KAKKNLEVKKNN, from the internal region of the protein sequence according to NP_032757.1.

Please note the [peptide](#) is available for sale.

Purification and Storage

Purified from goat serum by ammonium sulphate precipitation followed by antigen affinity chromatography using the immunizing peptide.

Supplied at 0.5 mg/ml in Tris saline, 0.02% sodium azide, pH7.3 with 0.5% bovine serum albumin.

Aliquot and store at -20°C. Minimize freezing and thawing.

Applications Tested

Peptide ELISA: antibody detection limit dilution 1:4000.

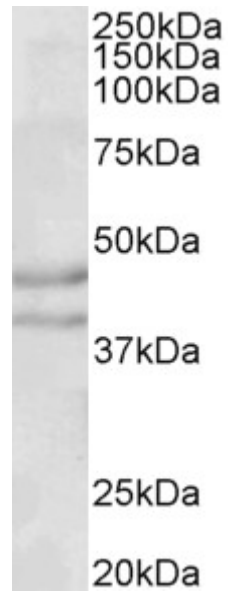
Western blot: Approx 40+45kDa band observed in Rat Brain lysates (calculated MW of 42.6kDa according to NP_032757.1). Recommended concentration: 0.1-0.3µg/ml.

Immunoprecipitation: A customer successfully used this product for IP of Human Y2R, but the Human Y2R could not be detected in WB by this antibody.

Species Reactivity

Tested: Rat

Expected from sequence similarity: Human, Mouse, Rat, Dog



EB07639 (0.1 μ g/ml) staining of Rat Brain lysate (35 μ g protein in RIPA buffer). Primary incubation was 1 hour. Detected by chemiluminescence.