

## UK Office

### Everest Biotech Ltd

Cherwell Innovation Centre  
77 Heyford Park  
Upper Heyford  
Oxfordshire  
OX25 5HD  
UK

Enquiries:

[info@everestbiotech.com](mailto:info@everestbiotech.com)

Sales:

[sales@everestbiotech.com](mailto:sales@everestbiotech.com)

Tech support:

[support@everestbiotech.com](mailto:support@everestbiotech.com)

Tel: +44 (0)1869 238326

Fax: +44 (0)1869 238327

## US Office

### Everest Biotech c/o Abcore

405 Maple Street, Suite A106  
Ramona,  
CA 92065  
USA

Inquiries:

[info@everestbiotech.com](mailto:info@everestbiotech.com)

Sales:

[usasales@everestbiotech.com](mailto:usasales@everestbiotech.com)

Tech support:

[support@everestbiotech.com](mailto:support@everestbiotech.com)

Tel: 888-320-4628 (toll-free)

Fax: 888-841-9041

[www.everestbiotech.com](http://www.everestbiotech.com)

**Research Use Only. Not for  
diagnostic or therapeutic use.**

## EB05370 - Goat Anti-NQO1 Antibody

Size: 100µg specific antibody in 200µl



### Target Protein

**Principal Names:** NQO1, NAD(P)H dehydrogenase, quinone 1, DTD, QR1, DHQU, DIA4, NMOR1, NMORI, diaphorase-4, diaphorase (NADH/NADPH), diaphorase (NADH/NADPH) (cytochrome b-5 reductase), NAD(P)H:menadione oxidoreductase 1, dioxin-inducible 1, DT-diaphorase, NAD(P)H menadione oxidoreductase 1, dioxin-inducible, NAD(P)H:Quinone acceptor oxidoreductase type 1, NAD(P)H menadione oxidoreductase 1, dioxin-inducible, NAD(P)H:quinone oxidoreductase, azoreductase, diaphorase (NADH/NADPH) (cytochrome b-5 reductase), dioxin-inducible 1, menadione reductase, phyloquinone reductase, quinone reductase 1

**Official Symbol:** NQO1

**Accession Number(s):** NP\_000894.1; NP\_001020604.1; NP\_001020605.1

**Human GeneID(s):** [1728](#)

**Non-Human GeneID(s):** 18104 (mouse)

**Important Comments:** This products is expected to recognize all three reported isoforms (NP\_000894.1, NP\_001020604.1 and NP\_001020605.1).

### Immunogen

Peptide with sequence C-SIPTDNQIKARK, from the C Terminus of the protein sequence according to NP\_000894.1; NP\_001020604.1; NP\_001020605.1.

Please note the [peptide](#) is available for sale.

### Purification and Storage

Purified from goat serum by ammonium sulphate precipitation followed by antigen affinity chromatography using the immunizing peptide.

Supplied at 0.5 mg/ml in Tris saline, 0.02% sodium azide, pH7.3 with 0.5% bovine serum albumin.

Aliquot and store at -20°C. Minimize freezing and thawing.

### Applications Tested

**Peptide ELISA:** antibody detection limit dilution 1:64000.

**Western blot:** Approx 28kDa band observed in lysates of Glioblastoma cell line U251 and approx 30kDa band observed in Human Kidney and Lung lysates and in Rat and Pig Kidney lysates (calculated MW of 27.3kDa according to Human NP\_001020604.1 and 30.9kDa according to Human NP\_000894.1, Rat NP\_058696.2 and Pig NP\_001153085.1). Recommended concentration: 0.03-0.3µg/ml. Primary incubation 1 hour at room temperature.

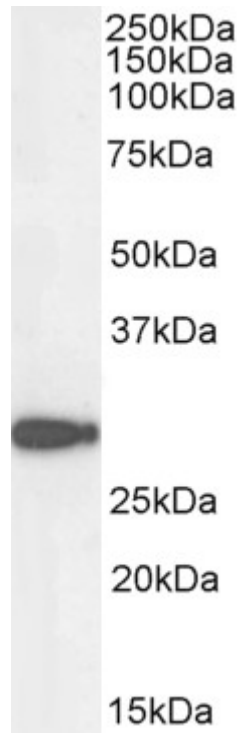
**IHC:** Paraffin embedded Human Kidney. Recommended concentration: 5µg/ml.

**Immunofluorescence:** Strong expression of the protein seen in the cytoplasm of HepG2 and U251 cells. Recommended concentration: 5-10µg/ml.

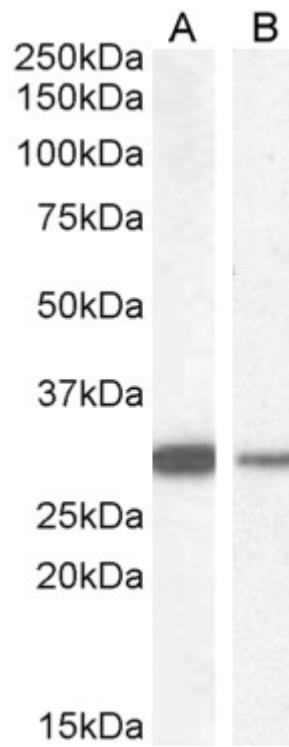
### Species Reactivity

**Tested:** Human, Rat, Pig

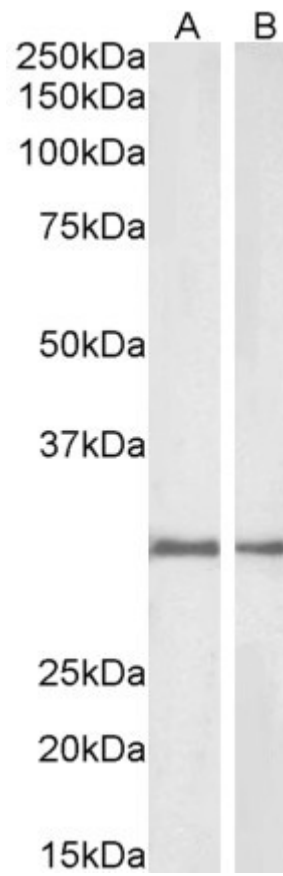
**Expected from sequence similarity:** Human, Rat, Dog, Pig



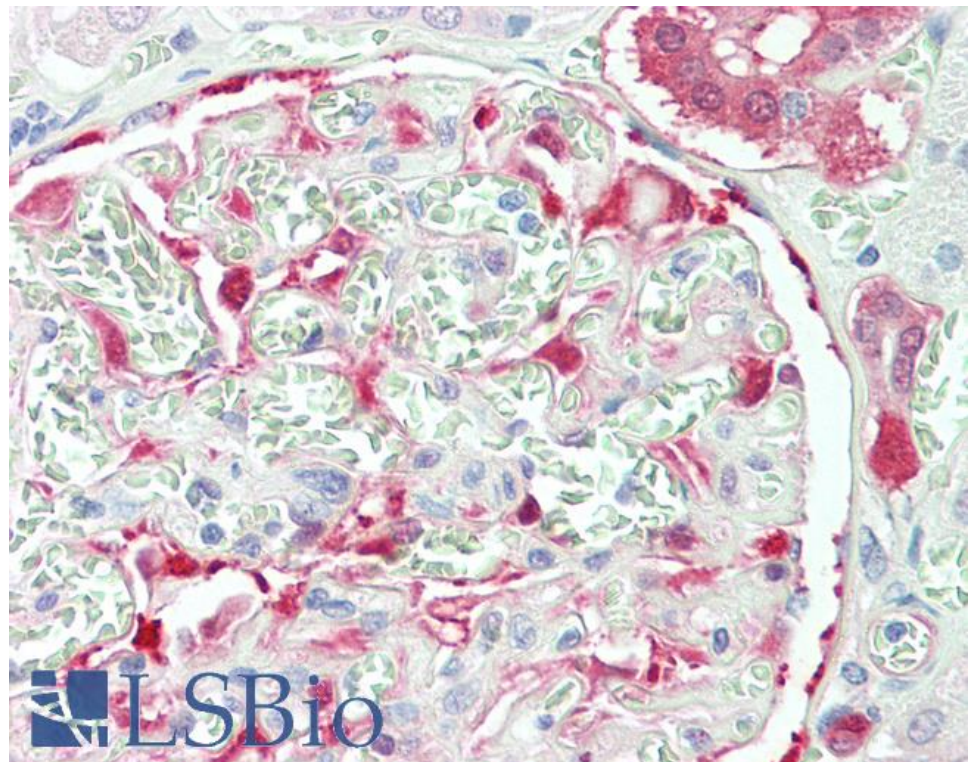
EB05370 staining (0.1 $\mu$ g/ml) of U251 cell lysate (RIPA buffer, 35 $\mu$ g total protein per lane). Detected using chemiluminescence.



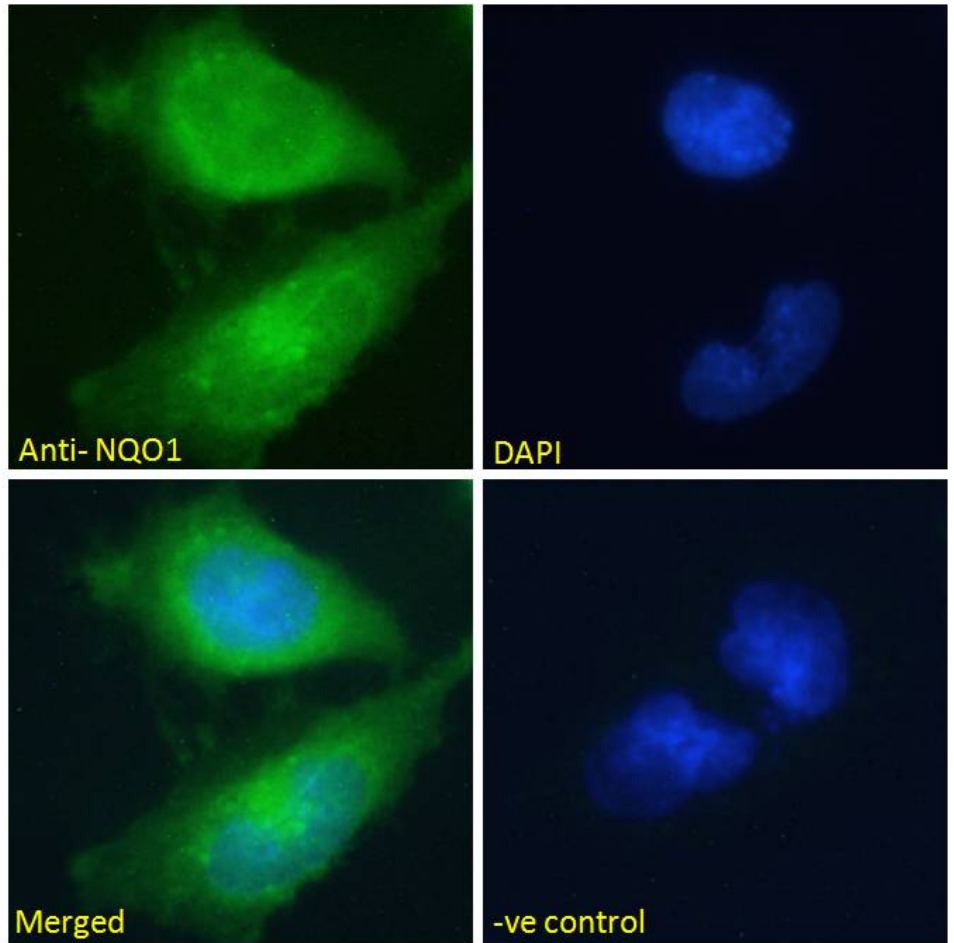
EB05370 staining (0.03 $\mu$ g/ml) of Human Kidney (A) and (0.3 $\mu$ g/ml) Lung (B) lysate (RIPA buffer, [35 $\mu$ g total protein per lane). Detected using chemiluminescence.



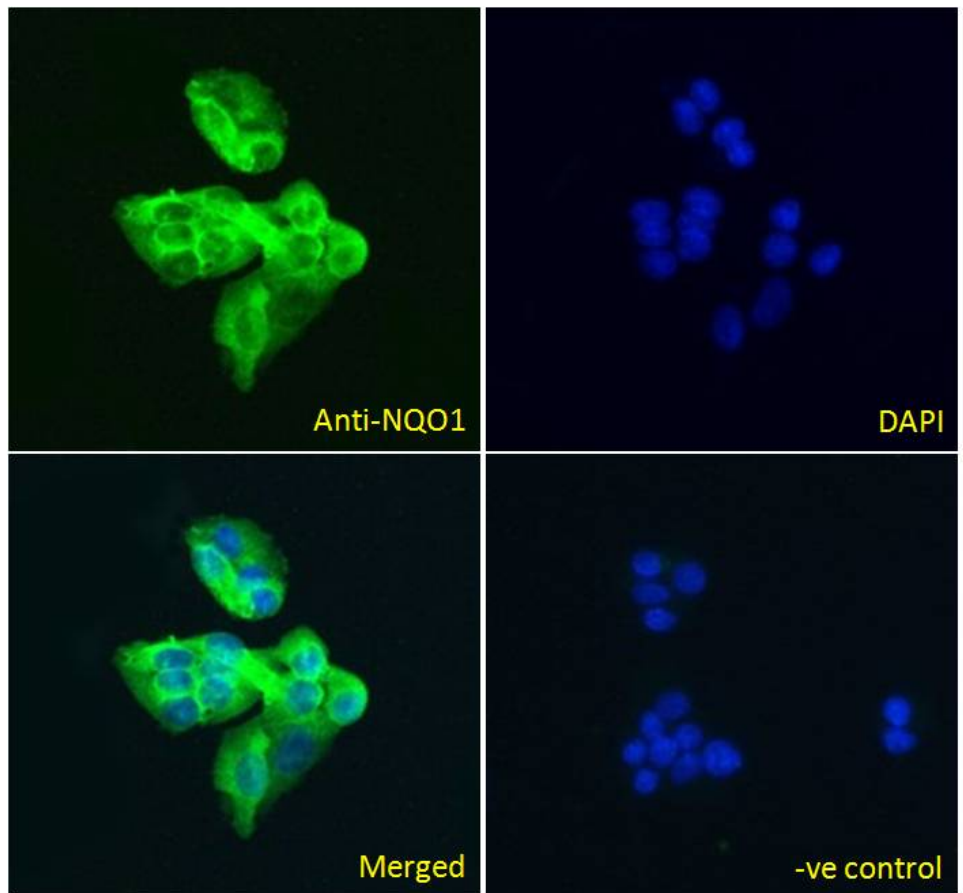
EB05370 (1 $\mu$ g/ml) staining of Rat (A) and Pig (B) Kidney lysate (35 $\mu$ g protein in RIPA buffer). Detected by chemiluminescence



EB05370 (5 $\mu$ g/ml) staining of paraffin embedded Human Kidney. Steamed antigen retrieval with citrate buffer pH 6, AP-staining.



EB05370 Immunofluorescence analysis of paraformaldehyde fixed U251 cells, permeabilized with 0.15% Triton. Primary incubation 1hr (10ug/ml) followed by Alexa Fluor 488 secondary antibody (2ug/ml), showing cytoplasmic staining. The nuclear stain is DAPI (blue). Negative control: Unimmunized goat IgG (10ug/ml) followed by Alexa Fluor 488 secondary antibody (2ug/ml).



EB05370 Immunofluorescence analysis of paraformaldehyde fixed HepG2 cells, permeabilized with 0.15% Triton. Primary incubation 1hr (5ug/ml) followed by Alexa Fluor 488 secondary antibody (2ug/ml), showing cytoplasmic staining. The nuclear stain is DAPI (blue). Negative control: Unimmunized goat IgG (5ug/ml) followed by Alexa Fluor 488 secondary antibody (2ug/ml).