

UK Office

Everest Biotech Ltd

Cherwell Innovation Centre
77 Heyford Park
Upper Heyford
Oxfordshire
OX25 5HD
UK

Enquiries:

info@everestbiotech.com

Sales:

sales@everestbiotech.com

Tech support:

support@everestbiotech.com

Tel: +44 (0)1869 238326

www.everestbiotech.com

**Research Use Only. Not for
diagnostic or therapeutic use.**

EB12283 - Goat Anti-NR5A2 / LRH1 Antibody

Size: 100µg specific antibody in 200µl



Target Protein

Principal Names: NR5A2, nuclear receptor subfamily 5, group A, member 2, B1F, B1F2, CPF, FTF, FTZ-F1, FTZ-F1beta, LRH-1, LRH1, hB1F-2, CYP7A promoter-binding factor, alpha-1-fetoprotein transcription factor, b1-binding factor, hepatocyte transcription factor which activates enhancer II of hepatitis B virus, fetoprotein-alpha 1 (AFP) transcription factor, hepatocytic transcription factor, liver nuclear receptor homolog-1 variant 2, liver receptor homolog 1, liver receptor homolog-1, nuclear receptor NR5A2, nuclear receptor subfamily 5 group A member 2

Official Symbol: NR5A2

Accession Number(s): NP_995582.1; NP_003813.1

Human GeneID(s): [2494](#)

Non-Human GeneID(s): 26424 (mouse), 60349 (rat)

Important Comments: This antibody is expected to recognize both reported isoforms (NP_995582.1; NP_003813.1).

Immunogen

Peptide with sequence C-TDYDRSPFVTSPIS, from the internal region of the protein sequence according to NP_995582.1; NP_003813.1.

Please note the [peptide](#) is available for sale.

Purification and Storage

Purified from goat serum by ammonium sulphate precipitation followed by antigen affinity chromatography using the immunizing peptide.

Supplied at 0.5 mg/ml in Tris saline, 0.02% sodium azide, pH7.3 with 0.5% bovine serum albumin.

Aliquot and store at -20°C. Minimize freezing and thawing.

Applications Tested

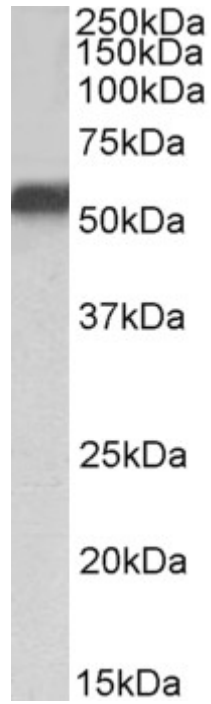
Peptide ELISA: antibody detection limit dilution 1:128000.

Western blot: Approx 55kDa band observed in nuclear lysates of cell lines HeLa and HepG2, and approx 60kDa band observed in Pig Ovary lysates (calculated MW of 56.5kDa according to Human NP_003813.1 and Pig AFD98842.1). Recommended concentration: 0.3-1µg/ml. Primary incubation was 1 hour. Preliminary testing was unsuccessful on Mouse Liver and NIH-3T3 cell line for this particular batch.

Species Reactivity

Tested: Human, Pig

Expected from sequence similarity: Human, Mouse, Rat, Dog, Pig, Cow



EB12283 (1 μ g/ml) staining of HepG2 nuclear lysate (35 μ g protein in RIPA buffer). Detected by chemiluminescence.



EB12283 (0.3 μ g/ml) staining of Pig Ovary lysate (35 μ g protein in RIPA buffer). Detected by chemiluminescence.