

## UK Office

### Everest Biotech Ltd

Cherwell Innovation Centre  
77 Heyford Park  
Upper Heyford  
Oxfordshire  
OX25 5HD  
UK

Enquiries:

[info@everestbiotech.com](mailto:info@everestbiotech.com)

Sales:

[sales@everestbiotech.com](mailto:sales@everestbiotech.com)

Tech support:

[support@everestbiotech.com](mailto:support@everestbiotech.com)

Tel: +44 (0)1869 238326

[www.everestbiotech.com](http://www.everestbiotech.com)

**Research Use Only. Not for  
diagnostic or therapeutic use.**

## EB09516 - Goat Anti-NUDC Antibody

Size: 100µg specific antibody in 200µl



### Target Protein

**Principal Names:** NUDC, nuclear distribution gene C homolog (A. nidulans), HNUDC, MNUDC, NPD011, OTTHUMP00000004405, nuclear distribution gene C homolog

**Official Symbol:** NUDC

**Accession Number(s):** NP\_006591.1

**Human GeneID(s):** [10726](#)

**Non-Human GeneID(s):** 18221 (mouse), 29648 (rat)

### Immunogen

Peptide with sequence C-PNLGNGADLPNYR, from the internal region of the protein sequence according to NP\_006591.1.

Please note the [peptide](#) is available for sale.

### Purification and Storage

Purified from goat serum by ammonium sulphate precipitation followed by antigen affinity chromatography using the immunizing peptide.

Supplied at 0.5 mg/ml in Tris saline, 0.02% sodium azide, pH7.3 with 0.5% bovine serum albumin.

Aliquot and store at -20°C. Minimize freezing and thawing.

### Applications Tested

**Peptide ELISA:** antibody detection limit dilution 1:32000.

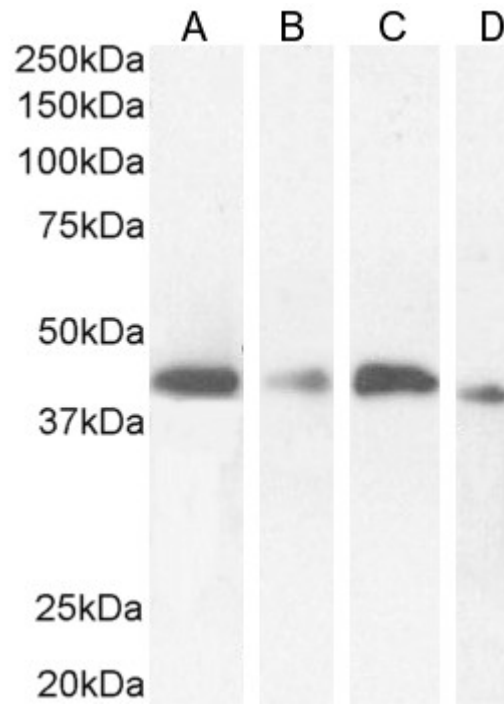
**Western blot:** Approx 40kDa band observed in lysates of cell lines HeLa, HepG2 and K562, and approx. 38kDa in lysates of cell line KNRK (calculated MW of 38.2kDa according to Human NP\_006591.1) and 38.4kDa according to Rat NP\_058967.1). Recommended concentration: 0.3-1µg/ml. Primary incubation 1 hour at room temperature.

**Immunofluorescence:** Strong expression of the protein seen in the cytoplasm of A431 cells. Recommended concentration: 10µg/ml.

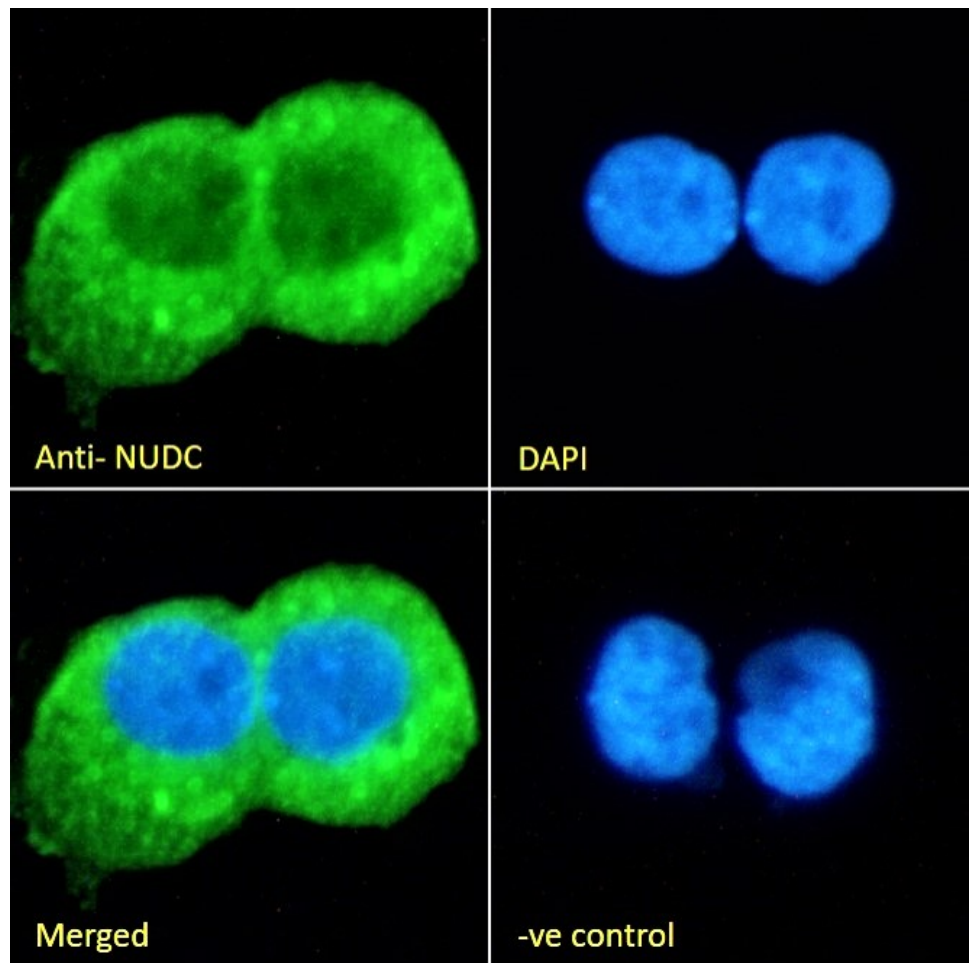
### Species Reactivity

**Tested:** Human, Rat

**Expected from sequence similarity:** Human, Mouse, Rat, Dog, Cow



EB09516 (0.5µg/ml) staining of HeLa (A), HepG2 (B), K562 (C) and KNRK (D) cell lysate (35µg protein in RIPA buffer). Detected by chemiluminescence.



EB09516 Immunofluorescence analysis of paraformaldehyde fixed A431 cells, permeabilized with 0.15% Triton. Primary incubation 1hr (10ug/ml) followed by Alexa Fluor 488 secondary antibody (2ug/ml), showing cytoplasmic staining. The nuclear stain is DAPI (blue). Negative control: Unimmunized goat IgG (10ug/ml) followed by Alexa

Fluor 488 secondary antibody (2ug/ml).