



UK Office

Everest Biotech Ltd

Cherwell Innovation Centre
77 Heyford Park
Upper Heyford
Oxfordshire
OX25 5HD
UK

Enquiries:

info@everestbiotech.com

Sales:

sales@everestbiotech.com

Tech support:

support@everestbiotech.com

Tel: +44 (0)1869 238326

Fax: +44 (0)1869 238327

US Office

Everest Biotech c/o Abcore

405 Maple Street, Suite A106
Ramona,
CA 92065
USA

Inquiries:

info@everestbiotech.com

Sales:

usasales@everestbiotech.com

Tech support:

support@everestbiotech.com

Tel: 888-320-4628 (toll-free)

Fax: 888-841-9041

www.everestbiotech.com

**Research Use Only. Not for
diagnostic or therapeutic use.**

EB05296-T - Goat Anti-NUMB Antibody - Trial

Size: 20µg specific antibody in 40µl



Target Protein

Principal Names: NUMB, numb homolog (Drosophila), S171, numb homolog

Official Symbol: NUMB

Accession Number(s): NP_001005743.1; 001005744.1; NP_003735; NP_001005745.1

Human GeneID(s): [8650](#)

Non-Human GeneID(s): 18222 (mouse)

Important Comments: This antibody is expected to recognize all reported isoforms (NP_001005743.1, 001005744.1, NP_003735, NP_001005745.1). It is also likely to cross-react with Numblake (NUMBL, GeneID: 9253) which has a very similar C-Terminus, although this has not yet been tested experimentally.

Immunogen

Peptide with sequence C-PFSSDLQKTFEIEL, from the C Terminus of the protein sequence according to NP_001005743.1; 001005744.1; NP_003735; NP_001005745.1.

Please note the [peptide](#) is available for sale.

Purification and Storage

Purified from goat serum by ammonium sulphate precipitation followed by antigen affinity chromatography using the immunizing peptide.

Supplied at 0.5 mg/ml in Tris saline, 0.02% sodium azide, pH7.3 with 0.5% bovine serum albumin.

Aliquot and store at -20°C. Minimize freezing and thawing.

Applications Tested

Peptide ELISA: antibody detection limit dilution 1:128000.

IHC: Paraffin embedded Human Prostate. Recommended concentration: 6-8µg/ml.

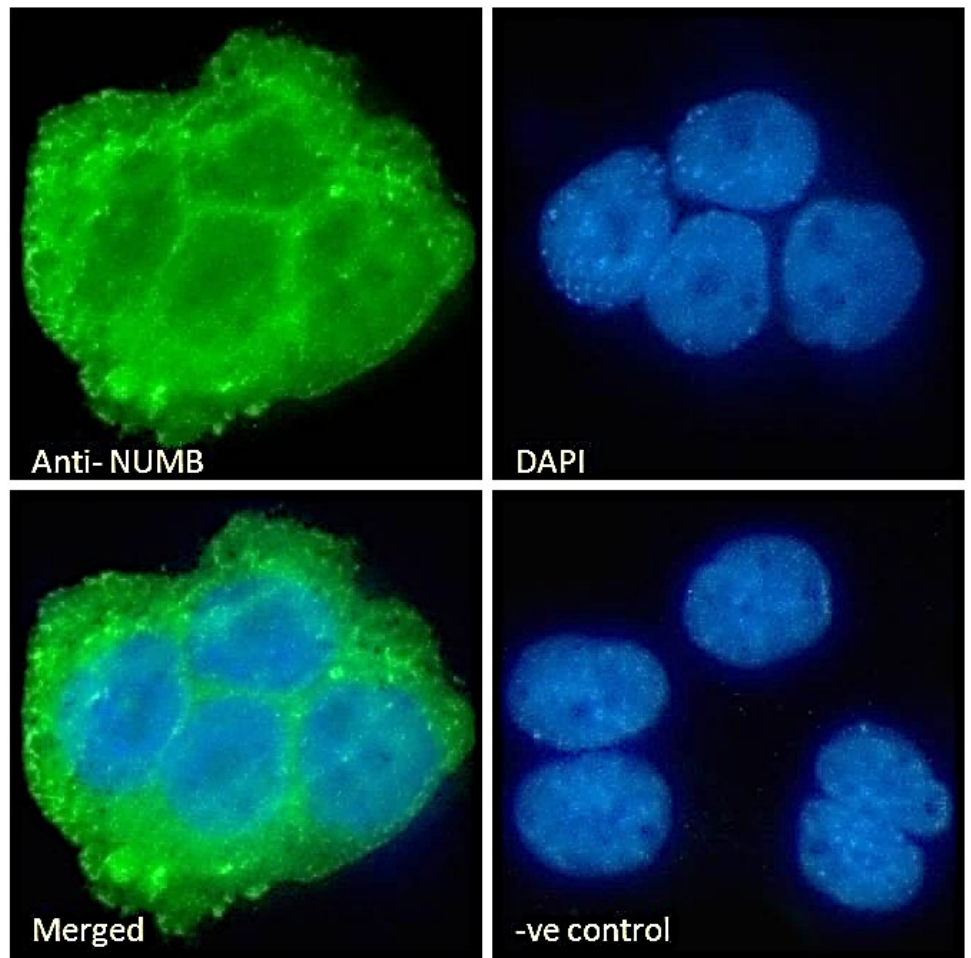
Immunofluorescence: Strong expression of the protein seen in the cell junctions/plasma membrane and cytoplasm of A431 and NIH3T3 cells. Recommended concentration: 10µg/ml.

Flow Cytometry: Flow cytometric analysis of A431 cells. Recommended concentration: 10ug/ml.

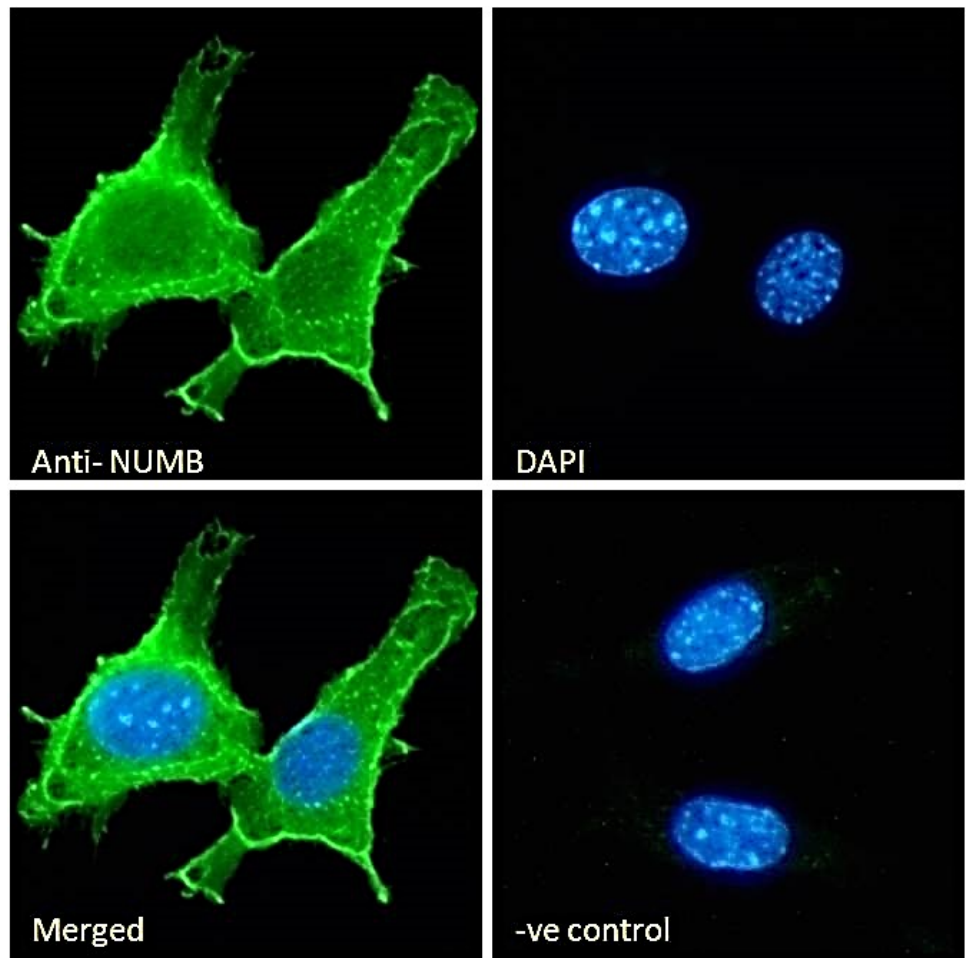
Species Reactivity

Tested: Human, Mouse

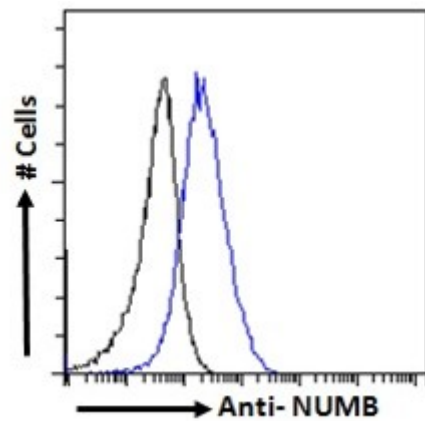
Expected from sequence similarity: Human, Mouse, Dog, Cow



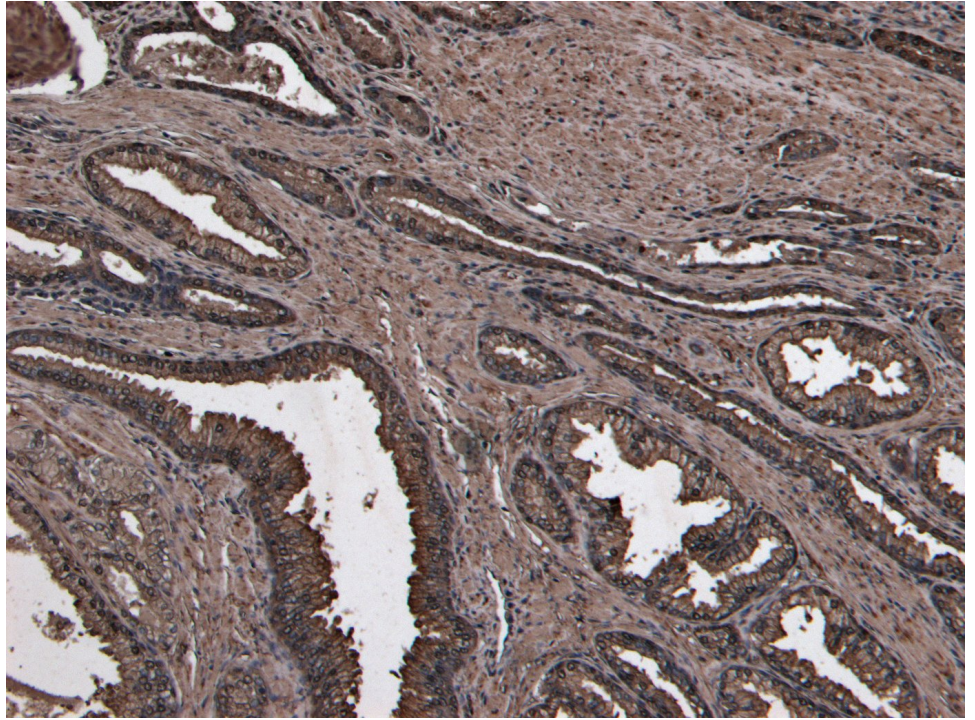
EB05296 Immunofluorescence analysis of paraformaldehyde fixed A431 cells, permeabilized with 0.15% Triton. Primary incubation 1hr (10ug/ml) followed by Alexa Fluor 488 secondary antibody (2ug/ml), showing cell junction and cytoplasmic staining. The nuclear stain is DAPI (blue). Negative control: Unimmunized goat IgG (10ug/ml) followed by Alexa Fluor 488 secondary antibody (2ug/ml).



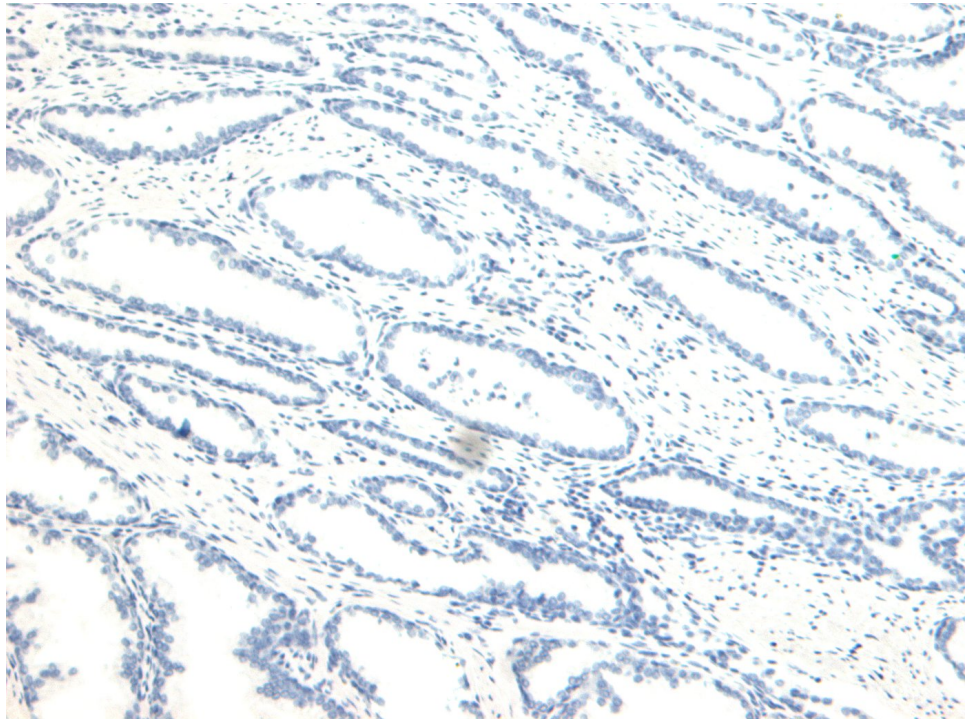
EB05296 Immunofluorescence analysis of paraformaldehyde fixed NIH3T3 cells, permeabilized with 0.15% Triton. Primary incubation 1hr (10ug/ml) followed by Alexa Fluor 488 secondary antibody (2ug/ml), showing plasma membrane and cytoplasmic staining. The nuclear stain is DAPI (blue). Negative control: Unimmunized goat IgG (10ug/ml) followed by Alexa Fluor 488 secondary antibody (2ug/ml).



EB05296 Flow cytometric analysis of paraformaldehyde fixed A431 cells (blue line), permeabilized with 0.5% Triton. Primary incubation 1hr (10ug/ml) followed by Alexa Fluor 488 secondary antibody (1ug/ml). IgG control: Unimmunized goat IgG (black line) followed by Alexa Fluor 488 secondary antibody.



EB05296 (8µg/ml) staining of paraffin embedded Human Prostate. Heat induced antigen retrieval with citrate buffer pH 6, HRP-staining.



EB05296 Negative Control showing staining of paraffin embedded Human Prostate, with no primary antibody.