



UK Office

Everest Biotech Ltd

Cherwell Innovation Centre
77 Heyford Park
Upper Heyford
Oxfordshire
OX25 5HD
UK

Enquiries:

info@everestbiotech.com

Sales:

sales@everestbiotech.com

Tech support:

support@everestbiotech.com

Tel: +44 (0)1869 238326

Fax: +44 (0)1869 238327

US Office

Everest Biotech c/o Abcore

405 Maple Street, Suite A106
Ramona,
CA 92065
USA

Inquiries:

info@everestbiotech.com

Sales:

usasales@everestbiotech.com

Tech support:

support@everestbiotech.com

Tel: 888-320-4628 (toll-free)

Fax: 888-841-9041

www.everestbiotech.com

**Research Use Only. Not for
diagnostic or therapeutic use.**

EB11530 - Goat Anti-NUMBL Antibody

Size: 100µg specific antibody in 200µl



Target Protein

Principal Names: CAG3A, CTG3a, NBL, numb homolog (Drosophila)-like, numb homolog-like, NUMBL, NUMBLIKE, numb-like protein, NUMBR, NUMB-R, numb-related protein, TNRC23

Official Symbol: NUMBL

Accession Number(s): NP_004747.1

Human GeneID(s): [9253](#)

Non-Human GeneID(s): 18223 (mouse), 292732 (rat)

Immunogen

Peptide with sequence C-PAQPGHVSPTPAT, from the internal region of the protein sequence according to NP_004747.1.

Please note the [peptide](#) is available for sale.

Purification and Storage

Purified from goat serum by ammonium sulphate precipitation followed by antigen affinity chromatography using the immunizing peptide.

Supplied at 0.5 mg/ml in Tris saline, 0.02% sodium azide, pH7.3 with 0.5% bovine serum albumin.

Aliquot and store at -20°C. Minimize freezing and thawing.

Applications Tested

Peptide ELISA: antibody detection limit dilution 1:16000.

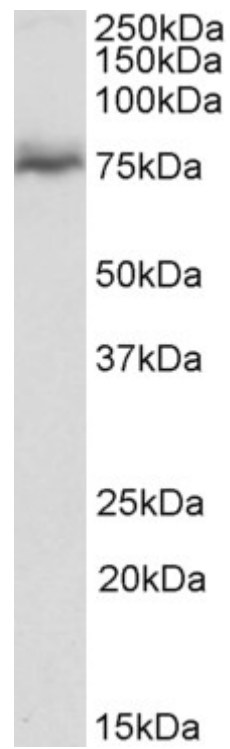
Western blot: Approx 75kDa band observed in Mouse fetal Brain lysates (calculated MW of 64.1kDa according to Mouse NP_035080.2). The observed molecular weight corresponds to earlier findings in literature with different antibodies (Tao et al, Mol Biol Cell. 2012 Jul;23(14):2635-44.PMID: 22593207). Recommended concentration: 0.03-0.1µg/ml.

IHC: In paraffin embedded fetal Mouse Brain shows staining of lobes and fibres in the optic disc (first figure) and nervous fibres from the spinal metamer roots (second figure). Recommended concentration, 4-6µg/ml.

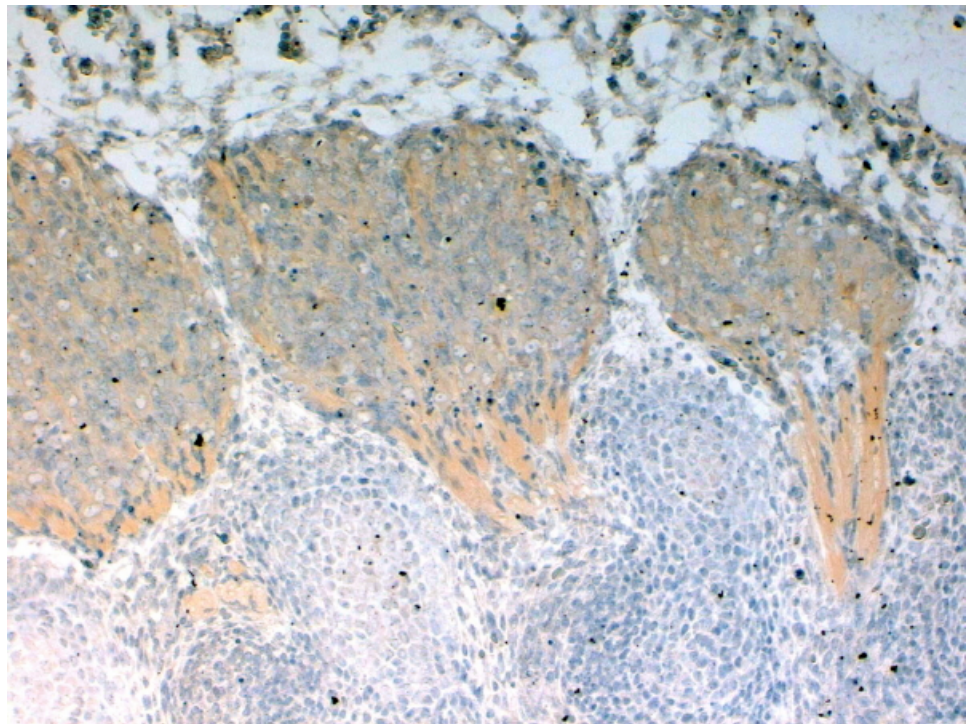
Species Reactivity

Tested: Mouse

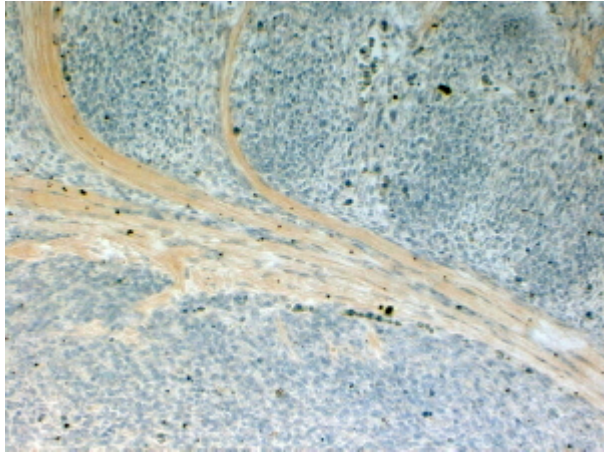
Expected from sequence similarity: Human, Mouse, Rat, Dog, Cow



EB11530 (0.1 μ g/ml) staining of fetal Mouse Brain lysate (35 μ g protein in RIPA buffer). Primary incubation was 1 hour. Detected by chemiluminescence.



EB11530 (4 μ g/ml) staining of paraffin embedded fetal Mouse Brain. Steamed antigen retrieval with citrate buffer pH 6, HRP-staining.



EB11530 (4µg/ml) staining of paraffin embedded fetal Mouse Brain. Steamed antigen retrieval with citrate buffer pH 6, HRP-staining.