



## UK Office

### Everest Biotech Ltd

Cherwell Innovation Centre  
77 Heyford Park  
Upper Heyford  
Oxfordshire  
OX25 5HD  
UK

Enquiries:

[info@everestbiotech.com](mailto:info@everestbiotech.com)

Sales:

[sales@everestbiotech.com](mailto:sales@everestbiotech.com)

Tech support:

[support@everestbiotech.com](mailto:support@everestbiotech.com)

Tel: +44 (0)1869 238326

[www.everestbiotech.com](http://www.everestbiotech.com)

**Research Use Only. Not for  
diagnostic or therapeutic use.**

## EB10160 - Goat Anti-NUP107 Antibody

Size: 100µg specific antibody in 200µl



### Target Protein

**Principal Names:** nucleoporin 107kDa, NUP84, NUP107

**Official Symbol:** NUP107

**Accession Number(s):** NP\_065134.1

**Human GeneID(s):** [57122](#)

**Non-Human GeneID(s):** 103468 (mouse), 116555 (rat)

### Immunogen

Peptide with sequence C-PLPAEDDNAIREH, from the internal region of the protein sequence according to NP\_065134.1.

Please note the [peptide](#) is available for sale.

### Purification and Storage

Purified from goat serum by ammonium sulphate precipitation followed by antigen affinity chromatography using the immunizing peptide.

Supplied at 0.5 mg/ml in Tris saline, 0.02% sodium azide, pH7.3 with 0.5% bovine serum albumin.

Aliquot and store at -20°C. Minimize freezing and thawing.

### Applications Tested

**Peptide ELISA:** antibody detection limit dilution 1:8000.

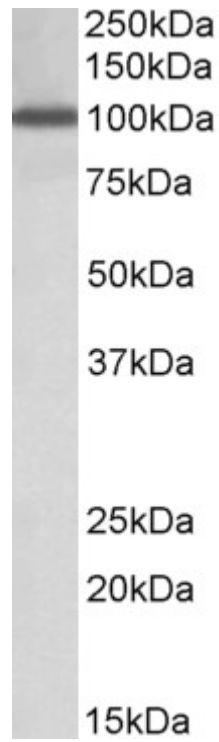
**Western blot:** Approx 100kDa band observed in Human Peripheral Blood

Mononucleocytes lysates (calculated MW of 106kDa according to Human NP\_065134.1) and 120kDa in nuclear lysates of NIH3T3 (calculated MW of 107kDa according to Mouse NP\_598771.1). Recommended concentration: 1-3µg/ml.

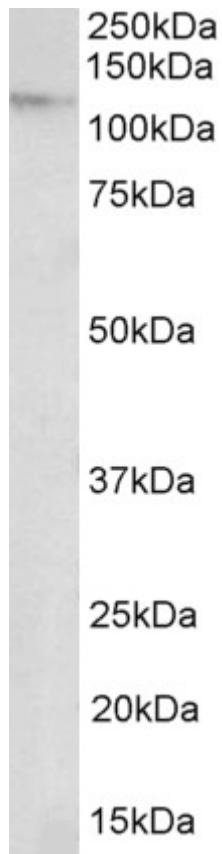
### Species Reactivity

**Tested:** Human, Mouse

**Expected from sequence similarity:** Human, Mouse, Rat, Dog, Cow



EB10160 (1 $\mu$ g/ml) staining of Peripheral Blood Lymphocytes lysate (35 $\mu$ g protein in RIPA buffer). Primary incubation was 1 hour. Detected by chemiluminescence.



EB10160 (2 $\mu$ g/ml) staining of nuclear lysate of NIH3T3 (35 $\mu$ g protein in RIPA buffer). Primary incubation was 1 hour. Detected by chemiluminescence.