



UK Office

Everest Biotech Ltd

Cherwell Innovation Centre
77 Heyford Park
Upper Heyford
Oxfordshire
OX25 5HD
UK

Enquiries:

info@everestbiotech.com

Sales:

sales@everestbiotech.com

Tech support:

support@everestbiotech.com

Tel: +44 (0)1869 238326

Fax: +44 (0)1869 238327

US Office

Everest Biotech c/o Abcore

405 Maple Street, Suite A106
Ramona,
CA 92065
USA

Inquiries:

info@everestbiotech.com

Sales:

usasales@everestbiotech.com

Tech support:

support@everestbiotech.com

Tel: 888-320-4628 (toll-free)

Fax: 888-841-9041

www.everestbiotech.com

**Research Use Only. Not for
diagnostic or therapeutic use.**

EB07404 - Goat Anti-Nur77 / TR3 (isoform a) Antibody

Size: 100µg specific antibody in 200µl



Target Protein

Principal Names: NR4A1, NUR77, nuclear receptor subfamily 4, group A, member 1, GFRP1, HMR, MGC9485, N10, NAK-1, NGFIB, NP10, TR3, TR3 orphan receptor, early response protein NAK1, growth factor-inducible nuclear protein N10, hormone receptor, orphan nuclear receptor HMR, steroid receptor TR3

Official Symbol: NR4A1

Accession Number(s): NP_002126.2; NP_775180.1

Human GeneID(s): [3164](#)

Non-Human GeneID(s): 15370 (mouse), 79240 (rat)

Important Comments: This antibody is expected to recognise isoform a (NP_002126.2 and NP_775180.1) only.

Immunogen

Peptide with sequence C-GRLPSKPKQPPDAS, from the internal region of the protein sequence according to NP_002126.2; NP_775180.1.

Please note the [peptide](#) is available for sale.

Purification and Storage

Purified from goat serum by ammonium sulphate precipitation followed by antigen affinity chromatography using the immunizing peptide.

Supplied at 0.5 mg/ml in Tris saline, 0.02% sodium azide, pH7.3 with 0.5% bovine serum albumin.

Aliquot and store at -20°C. Minimize freezing and thawing.

Applications Tested

Peptide ELISA: antibody detection limit dilution 1:32000.

Western blot: Approx 60kDa band observed in Human Thyroid gland lysates (calculated MW of 64.5kDa according to NP_002126.2 and NP_775180.1). Recommended concentration: 1-3µg/ml. Primary incubation was 1 hour.

IHC: Paraffin embedded Human Breast. Recommended concentration: 5µg/ml.

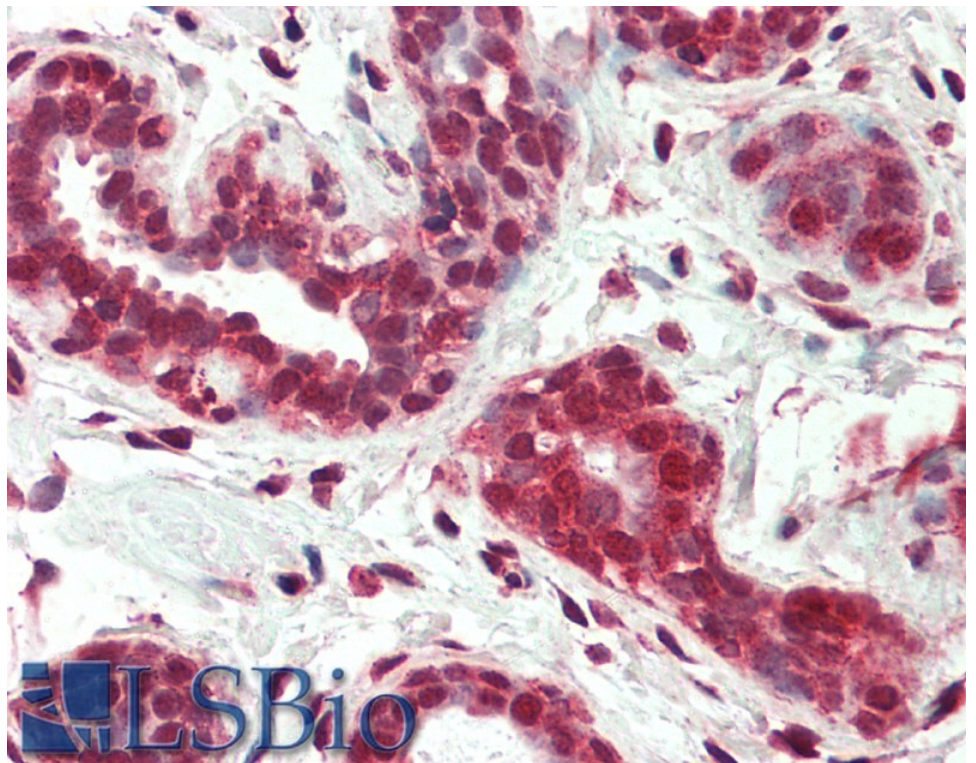
Species Reactivity

Tested: Human

Expected from sequence similarity: Human, Mouse, Rat, Dog



EB07404 (2µg/ml) staining of Human Thyroid lysate (35µg protein in RIPA buffer). Detected by chemiluminescence.



EB07404 (5µg/ml) staining of paraffin embedded Human Breast. Steamed antigen retrieval with citrate buffer pH 6, AP-staining.