

## UK Office

### Everest Biotech Ltd

Cherwell Innovation Centre  
77 Heyford Park  
Upper Heyford  
Oxfordshire  
OX25 5HD  
UK

Enquiries:

[info@everestbiotech.com](mailto:info@everestbiotech.com)

Sales:

[sales@everestbiotech.com](mailto:sales@everestbiotech.com)

Tech support:

[support@everestbiotech.com](mailto:support@everestbiotech.com)

Tel: +44 (0)1869 238326

[www.everestbiotech.com](http://www.everestbiotech.com)

**Research Use Only. Not for  
diagnostic or therapeutic use.**

## EB12370 - Goat Anti-OAS1 Antibody

Size: 100µg specific antibody in 200µl



### Target Protein

**Principal Names:** OAS1, 2'-5'-oligoadenylate synthetase 1, 40/46kDa, IFI-4, OIAS, OIASI, (2-5')oligo(A) synthase 1, (2-5')oligo(A) synthetase 1, 2',5'-oligo A synthetase 1, 2',5'-oligoadenylate synthetase 1, 40/46kDa, 2'-5' oligoadenylate synthetase 1 p48 isoform, 2'-5' oligoadenylate synthetase 1 p52 isoform, 2'-5'-oligoadenylate synthase 1, 2'-5'-oligoisoadenylate synthetase 1, 2-5A synthase 1, 2-5A synthetase 1, E18/E16, p46/p42 OAS

**Official Symbol:** OAS1

**Accession Number(s):** NP\_058132.2

**Human GeneID(s):** [4938](#)

**Important Comments:** This antibody is expected to recognize isoforms 1 (NP\_058132.2) only.

### Immunogen

Peptide with sequence C-THEYPHFSHRPST, from the internal region (near C terminus) of the protein sequence according to NP\_058132.2.

Please note the [peptide](#) is available for sale.

### Purification and Storage

Purified from goat serum by ammonium sulphate precipitation followed by antigen affinity chromatography using the immunizing peptide.

Supplied at 0.5 mg/ml in Tris saline, 0.02% sodium azide, pH7.3 with 0.5% bovine serum albumin.

Aliquot and store at -20°C. Minimize freezing and thawing.

### Applications Tested

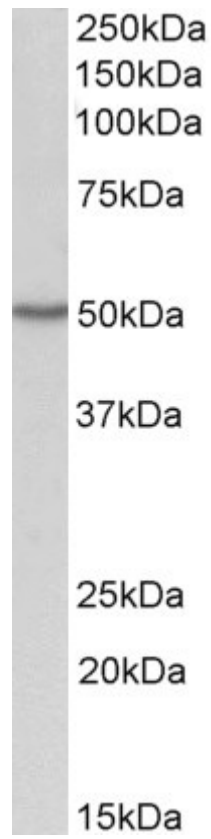
**Peptide ELISA:** antibody detection limit dilution 1:128000.

**Western blot:** Approx 50kDa band observed in lysates of cell line HepG2 (calculated MW of 46.0kDa according to NP\_058132.2). Recommended concentration: 1-3µg/ml.

### Species Reactivity

**Tested:** Human

**Expected from sequence similarity:** Human



EB12370 (1 $\mu$ g/ml) staining of HepG2 lysate (35 $\mu$ g protein in RIPA buffer). Primary incubation was 1 hour.  
Detected by chemiluminescence.