

UK Office

Everest Biotech Ltd

Cherwell Innovation Centre
77 Heyford Park
Upper Heyford
Oxfordshire
OX25 5HD
UK

Enquiries:

info@everestbiotech.com

Sales:

sales@everestbiotech.com

Tech support:

support@everestbiotech.com

Tel: +44 (0)1869 238326

www.everestbiotech.com

**Research Use Only. Not for
diagnostic or therapeutic use.**

EB08497 - Goat Anti-OAZ Antibody

Size: 100µg specific antibody in 200µl



Target Protein

Principal Names: ZNF423, zinc finger protein 423, Ebfaz, KIAA0760, MGC138520, MGC138522, OAZ, Roaz, ZFP423, Zfp104, OLF-1/EBF associated zinc finger, Smad- and Olf-interacting zinc finger protein, early B-cell factor associated zinc finger protein

Official Symbol: ZNF423

Accession Number(s): NP_055884.2

Human GeneID(s): [23090](#)

Non-Human GeneID(s): 94187 (mouse)

Immunogen

Peptide with sequence EPECDQKTSRALEDR, from the N Terminus (near) of the protein sequence according to NP_055884.2.

Please note the [peptide](#) is available for sale.

Purification and Storage

Purified from goat serum by ammonium sulphate precipitation followed by antigen affinity chromatography using the immunizing peptide.

Supplied at 0.5 mg/ml in Tris saline, 0.02% sodium azide, pH7.3 with 0.5% bovine serum albumin.

Aliquot and store at -20°C. Minimize freezing and thawing.

Applications Tested

Peptide ELISA: antibody detection limit dilution 1:2000.

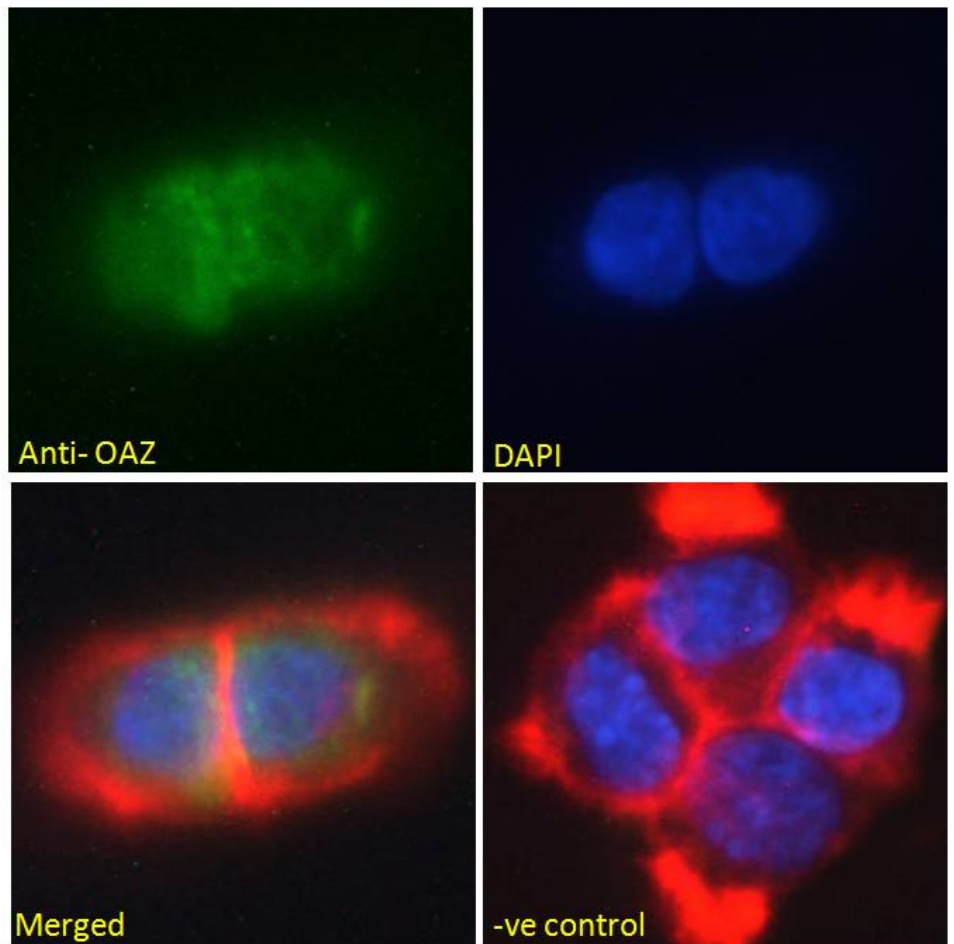
Immunofluorescence: Strong expression of the protein seen in the nuclei of A431 cells. Recommended concentration: 10µg/ml.

Flow Cytometry: Flow cytometric analysis of Kelly cells. Recommended concentration: 10ug/ml.

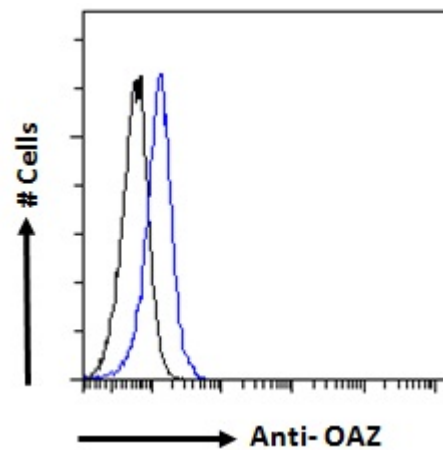
Species Reactivity

Tested: Human

Expected from sequence similarity: Human, Mouse



EB08497 Immunofluorescence analysis of paraformaldehyde fixed A431 cells, permeabilized with 0.15% Triton. Primary incubation 1hr (10ug/ml) followed by Alexa Fluor 488 secondary antibody (2ug/ml), showing nuclear staining. Actin filaments were stained with phalloidin (red) and the nuclear stain is DAPI (blue). Negative control: Unimmunized goat IgG (10ug/ml) followed by Alexa Fluor 488 secondary antibody (2ug/ml).



EB08497 Flow cytometric analysis of paraformaldehyde fixed Kelly cells (blue line), permeabilized with 0.5% Triton. Primary incubation 1hr (10ug/ml) followed by Alexa Fluor 488 secondary antibody (1ug/ml). IgG control: Unimmunized goat IgG (black line) followed by Alexa Fluor 488 secondary antibody.