



UK Office

Everest Biotech Ltd

Cherwell Innovation Centre
77 Heyford Park
Upper Heyford
Oxfordshire
OX25 5HD
UK

Enquiries:

info@everestbiotech.com

Sales:

sales@everestbiotech.com

Tech support:

support@everestbiotech.com

Tel: +44 (0)1869 238326

Fax: +44 (0)1869 238327

US Office

Everest Biotech c/o Abcore

405 Maple Street, Suite A106
Ramona,
CA 92065
USA

Inquiries:

info@everestbiotech.com

Sales:

usasales@everestbiotech.com

Tech support:

support@everestbiotech.com

Tel: 888-320-4628 (toll-free)

Fax: 888-841-9041

www.everestbiotech.com

**Research Use Only. Not for
diagnostic or therapeutic use.**

EB06852 - Goat Anti-OCT4 / POU5F1 Antibody

Size: 100µg specific antibody in 200µl



Target Protein

Principal Names: POU5F1, OTF4, POU domain, class 5, transcription factor 1, HGNC:9221, MGC22487, OCT3, OTF3, POU-type homeodomain-containing DNA-binding protein, octamer-binding transcription factor-3, POU class 5 homeobox 1, DADB-104B20.2, OCT4, POU domain, class 5, transcription factor 1

Official Symbol: POU5F1

Accession Number(s): NP_002692.2; NP_976034.3

Human GeneID(s): [5460](#)

Non-Human GeneID(s): 18999 (mouse), 294562 (rat)

Important Comments: This antibody is expected to recognise both reported isoforms (NP_002692.2 and NP_976034.3)

Immunogen

Peptide with sequence C-VTTLGSPMHSN, from the C Terminus of the protein sequence according to NP_002692.2; NP_976034.3.

Please note the [peptide](#) is available for sale.

Purification and Storage

Purified from goat serum by ammonium sulphate precipitation followed by antigen affinity chromatography using the immunizing peptide.

Supplied at 0.5 mg/ml in Tris saline, 0.02% sodium azide, pH7.3 with 0.5% bovine serum albumin.

Aliquot and store at -20°C. Minimize freezing and thawing.

Applications Tested

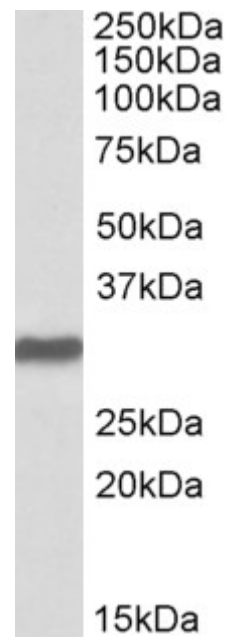
Peptide ELISA: antibody detection limit dilution 1:2000.

Western blot: Approx 30kDa band observed in Human Placenta, and approx 28kDa in Mouse Heart lysates (calculated MW of 30.1kDa according to Human NP_976034.3 and 25.0kDa according to Mouse NP_001239381.1). Recommended concentration: 0.5-2µg/ml. Primary incubation was 1 hour

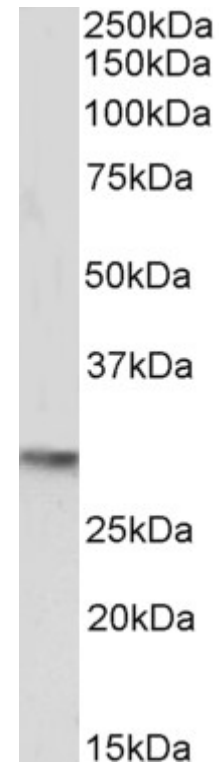
Species Reactivity

Tested: Human, Mouse

Expected from sequence similarity: Human, Mouse, Rat, Dog



EB06852 (2µg/ml) staining of Human Placenta lysate (35µg protein in RIPA buffer). Detected by chemiluminescence.



EB06852 (0.5µg/ml) staining of Mouse Heart lysate (35µg protein in RIPA buffer). Detected by chemiluminescence.