

## UK Office

### Everest Biotech Ltd

Cherwell Innovation Centre  
77 Heyford Park  
Upper Heyford  
Oxfordshire  
OX25 5HD  
UK

Enquiries:

[info@everestbiotech.com](mailto:info@everestbiotech.com)

Sales:

[sales@everestbiotech.com](mailto:sales@everestbiotech.com)

Tech support:

[support@everestbiotech.com](mailto:support@everestbiotech.com)

Tel: +44 (0)1869 238326

[www.everestbiotech.com](http://www.everestbiotech.com)

**Research Use Only. Not for  
diagnostic or therapeutic use.**

## EB11151 - Goat Anti-OCT6 (aa192-204) Antibody

Size: 100µg specific antibody in 200µl



### Target Protein

**Principal Names:** OCT6, octamer-binding protein 6, octamer-binding transcription factor 6, OTF6, OTF-6, POU class 3 homeobox 1, POU domain transcription factor SCIP, POU domain, class 3, transcription factor 1, SCIP, POU3F1

**Official Symbol:** POU3F1

**Accession Number(s):** NP\_002690.3

**Human GeneID(s):** [5453](#)

**Non-Human GeneID(s):** 18991 (mouse), 192110 (rat)

### Immunogen

Peptide with sequence C-HEDGHEAQLPSP, from the internal region of the protein sequence according to NP\_002690.3.

Please note the [peptide](#) is available for sale.

### Purification and Storage

Purified from goat serum by ammonium sulphate precipitation followed by antigen affinity chromatography using the immunizing peptide.

Supplied at 0.5 mg/ml in Tris saline, 0.02% sodium azide, pH7.3 with 0.5% bovine serum albumin.

Aliquot and store at -20°C. Minimize freezing and thawing.

### Applications Tested

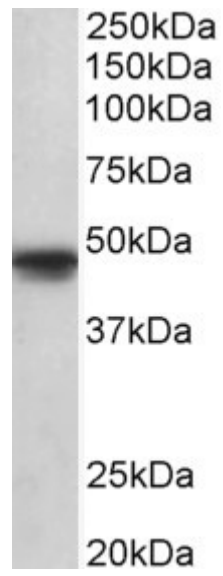
**Peptide ELISA:** antibody detection limit dilution 1:8000.

**Western blot:** Approx 48kDa band observed in lysates of cell line A549 (calculated MW of 45.5kDa according to NP\_002690.3). Recommended concentration: 1-3µg/ml.

### Species Reactivity

**Tested:** Human

**Expected from sequence similarity:** Human, Mouse, Rat, Dog, Pig, Cow



EB11151 (1 $\mu$ g/ml) staining of A549 lysate (35 $\mu$ g protein in RIPA buffer). Primary incubation was 1 hour.  
Detected by chemiluminescence.