

## UK Office

### Everest Biotech Ltd

Cherwell Innovation Centre  
77 Heyford Park  
Upper Heyford  
Oxfordshire  
OX25 5HD  
UK

Enquiries:

[info@everestbiotech.com](mailto:info@everestbiotech.com)

Sales:

[sales@everestbiotech.com](mailto:sales@everestbiotech.com)

Tech support:

[support@everestbiotech.com](mailto:support@everestbiotech.com)

Tel: +44 (0)1869 238326

[www.everestbiotech.com](http://www.everestbiotech.com)

**Research Use Only. Not for  
diagnostic or therapeutic use.**

## EB10610 - Goat Anti-ODF2 Antibody

Size: 100µg specific antibody in 200µl



### Target Protein

**Principal Names:** ODF2, outer dense fiber of sperm tails 2, CT134, FLJ44866, MGC111096, MGC9034, ODF2/1, ODF2/2, ODF84, cancer/testis antigen 134, cenexin 1, outer dense fiber of sperm tails protein 2, outer dense fiber of sperm tails, 84-kD, outer dense fiber protein 2, outer dense fibre of sperm tails 2, sperm tail structural protein

**Official Symbol:** ODF2

**Accession Number(s):** NP\_002531.3; NP\_702915.1

**Human GeneID(s):** [4957](#)

**Non-Human GeneID(s):** 18286 (mouse), 29479 (rat)

**Important Comments:** This antibody is expected to recognize reported isoform 1 (NP\_002531.3).

### Immunogen

Peptide with sequence C-REKHQASQKENKQ, from the internal region of the protein sequence according to NP\_002531.3; NP\_702915.1.

Please note the [peptide](#) is available for sale.

### Purification and Storage

Purified from goat serum by ammonium sulphate precipitation followed by antigen affinity chromatography using the immunizing peptide.

Supplied at 0.5 mg/ml in Tris saline, 0.02% sodium azide, pH7.3 with 0.5% bovine serum albumin.

Aliquot and store at -20°C. Minimize freezing and thawing.

### Applications Tested

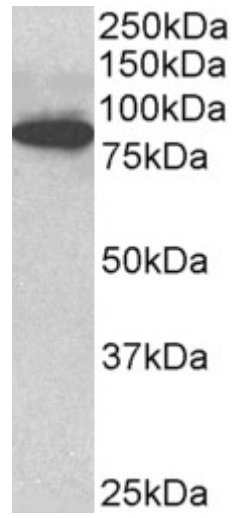
**Peptide ELISA:** antibody detection limit dilution 1:128000.

**Western blot:** Approx 85kDa band observed in C57/B6 mouse CTL lysates (calculated MW of 95.4kDa according to Mouse NP\_001106684.1). Recommended concentration: 1-3µg/ml.

### Species Reactivity

**Tested:** Mouse

**Expected from sequence similarity:** Human, Mouse, Rat, Dog, Pig



EB10610 (3 $\mu$ g/ml) staining of C57/B6 mouse CTL lysate (35 $\mu$ g protein in RIPA buffer). Primary incubation was 1 hour. Detected by chemiluminescence. Data provided by Everest grant winner Dr. J. Griffiths, University of Cambridge, UK