



UK Office

Everest Biotech Ltd

Cherwell Innovation Centre
77 Heyford Park
Upper Heyford
Oxfordshire
OX25 5HD
UK

Enquiries:

info@everestbiotech.com

Sales:

sales@everestbiotech.com

Tech support:

support@everestbiotech.com

Tel: +44 (0)1869 238326

Fax: +44 (0)1869 238327

US Office

Everest Biotech c/o Abcore

405 Maple Street, Suite A106
Ramona,
CA 92065
USA

Inquiries:

info@everestbiotech.com

Sales:

usasales@everestbiotech.com

Tech support:

support@everestbiotech.com

Tel: 888-320-4628 (toll-free)

Fax: 888-841-9041

www.everestbiotech.com

**Research Use Only. Not for
diagnostic or therapeutic use.**

EB10610 - Goat Anti-ODF2 Antibody

Size: 100µg specific antibody in 200µl



Target Protein

Principal Names: ODF2, outer dense fiber of sperm tails 2, CT134, FLJ44866, MGC111096, MGC9034, ODF2/1, ODF2/2, ODF84, cancer/testis antigen 134, cenexin 1, outer dense fiber of sperm tails protein 2, outer dense fiber of sperm tails, 84-kD, outer dense fiber protein 2, outer dense fibre of sperm tails 2, sperm tail structural protein

Official Symbol: ODF2

Accession Number(s): NP_002531.3; NP_702915.1

Human GeneID(s): [4957](#)

Non-Human GeneID(s): 18286 (mouse), 29479 (rat)

Important Comments: This antibody is expected to recognize reported isoform 1 (NP_002531.3).

Immunogen

Peptide with sequence C-REKHQASQKENKQ, from the internal region of the protein sequence according to NP_002531.3; NP_702915.1.

Please note the [peptide](#) is available for sale.

Purification and Storage

Purified from goat serum by ammonium sulphate precipitation followed by antigen affinity chromatography using the immunizing peptide.

Supplied at 0.5 mg/ml in Tris saline, 0.02% sodium azide, pH7.3 with 0.5% bovine serum albumin.

Aliquot and store at -20°C. Minimize freezing and thawing.

Applications Tested

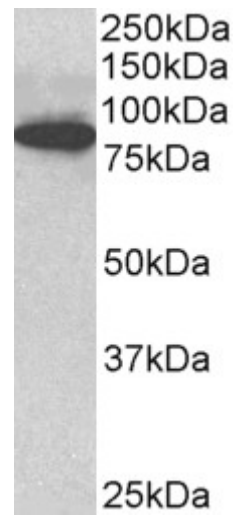
Peptide ELISA: antibody detection limit dilution 1:128000.

Western blot: Approx 85kDa band observed in C57/B6 mouse CTL lysates (calculated MW of 95.4kDa according to Mouse NP_001106684.1). Recommended concentration: 1-3µg/ml.

Species Reactivity

Tested: Mouse

Expected from sequence similarity: Human, Mouse, Rat, Dog, Pig



EB10610 (3 μ g/ml) staining of C57/B6 mouse CTL lysate (35 μ g protein in RIPA buffer). Primary incubation was 1 hour. Detected by chemiluminescence. Data provided by Everest grant winner Dr. J. Griffiths, University of Cambridge, UK