

## UK Office

### Everest Biotech Ltd

Cherwell Innovation Centre  
77 Heyford Park  
Upper Heyford  
Oxfordshire  
OX25 5HD  
UK

Enquiries:

[info@everestbiotech.com](mailto:info@everestbiotech.com)

Sales:

[sales@everestbiotech.com](mailto:sales@everestbiotech.com)

Tech support:

[support@everestbiotech.com](mailto:support@everestbiotech.com)

Tel: +44 (0)1869 238326

[www.everestbiotech.com](http://www.everestbiotech.com)

**Research Use Only. Not for  
diagnostic or therapeutic use.**

## EB09022 - Goat Anti-ORAI1 / CRACM1 Antibody

Size: 100µg specific antibody in 200µl



### Target Protein

**Principal Names:** ORAI1, CRACM1, ORAI calcium release-activated calcium modulator 1, FLJ14466, ORAT1, TMEM142A, calcium release-activated calcium channel protein 1, calcium release-activated calcium modulator 1, transmembrane protein 142A

**Official Symbol:** ORAI1

**Accession Number(s):** NP\_116179.2

**Human GeneID(s):** [84876](#)

**Non-Human GeneID(s):** 109305 (mouse)

### Immunogen

Peptide with sequence C-KKQPGQPRPTSKP, from the internal region of the protein sequence according to NP\_116179.2.

Please note the [peptide](#) is available for sale.

### Purification and Storage

Purified from goat serum by ammonium sulphate precipitation followed by antigen affinity chromatography using the immunizing peptide.

Supplied at 0.5 mg/ml in Tris saline, 0.02% sodium azide, pH7.3 with 0.5% bovine serum albumin.

Aliquot and store at -20°C. Minimize freezing and thawing.

### Applications Tested

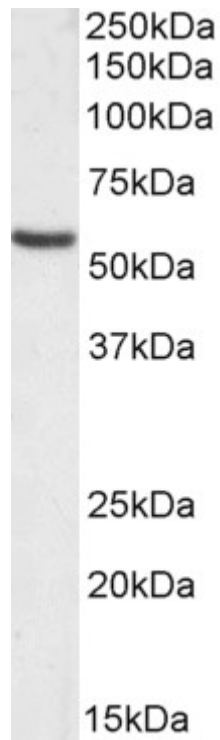
**Peptide ELISA:** antibody detection limit dilution 1:64000.

**Western blot:** Approx. 50-55kDa band observed in Human Placenta and Skin lysates (calculated MW of 32.7kDa according to NP\_116179.2). This molecular weight is routinely observed by other sources e.g. Li et al.; PMID: 17702753. Recommended concentration: 0.03-0.1µg/ml. Primary incubation 1 hour at room temperature.

### Species Reactivity

**Tested:** Human

**Expected from sequence similarity:** Human, Dog, Pig



EB09022 (0.1 $\mu$ g/ml) staining of Human Skin lysate (35 $\mu$ g protein in RIPA buffer). . Detected by chemiluminescence.



EB09022 (0.03 $\mu$ g/ml) staining of Human Placenta lysate (35 $\mu$ g protein in RIPA buffer). Primary incubation was 1 hour. Detected by chemiluminescence.