



UK Office

Everest Biotech Ltd

Cherwell Innovation Centre
77 Heyford Park
Upper Heyford
Oxfordshire
OX25 5HD
UK

Enquiries:

info@everestbiotech.com

Sales:

sales@everestbiotech.com

Tech support:

support@everestbiotech.com

Tel: +44 (0)1869 238326

Fax: +44 (0)1869 238327

US Office

Everest Biotech c/o Abcore

405 Maple Street, Suite A106
Ramona,
CA 92065
USA

Inquiries:

info@everestbiotech.com

Sales:

usasales@everestbiotech.com

Tech support:

support@everestbiotech.com

Tel: 888-320-4628 (toll-free)

Fax: 888-841-9041

www.everestbiotech.com

**Research Use Only. Not for
diagnostic or therapeutic use.**

EB09022 - Goat Anti-ORAI1 / CRACM1 Antibody

Size: 100µg specific antibody in 200µl



Target Protein

Principal Names: ORAI1, CRACM1, ORAI calcium release-activated calcium modulator 1, FLJ14466, ORAT1, TMEM142A, calcium release-activated calcium channel protein 1, calcium release-activated calcium modulator 1, transmembrane protein 142A

Official Symbol: ORAI1

Accession Number(s): NP_116179.2

Human GeneID(s): [84876](#)

Non-Human GeneID(s): 109305 (mouse)

Immunogen

Peptide with sequence C-KKQPGQPRPTSKP, from the internal region of the protein sequence according to NP_116179.2.

Please note the [peptide](#) is available for sale.

Purification and Storage

Purified from goat serum by ammonium sulphate precipitation followed by antigen affinity chromatography using the immunizing peptide.

Supplied at 0.5 mg/ml in Tris saline, 0.02% sodium azide, pH7.3 with 0.5% bovine serum albumin.

Aliquot and store at -20°C. Minimize freezing and thawing.

Applications Tested

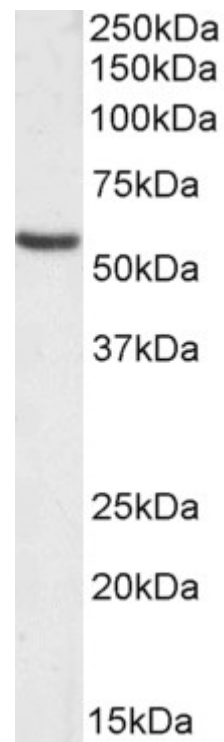
Peptide ELISA: antibody detection limit dilution 1:64000.

Western blot: Approx. 50-55kDa band observed in Human Placenta and Skin lysates (calculated MW of 32.7kDa according to NP_116179.2). This molecular weight is routinely observed by other sources e.g. Li et al.; PMID: 17702753. Recommended concentration: 0.03-0.1µg/ml. Primary incubation 1 hour at room temperature.

Species Reactivity

Tested: Human

Expected from sequence similarity: Human, Dog, Pig



EB09022 (0.1 μ g/ml) staining of Human Skin lysate (35 μ g protein in RIPA buffer). . Detected by chemiluminescence.



EB09022 (0.03 μ g/ml) staining of Human Placenta lysate (35 μ g protein in RIPA buffer). Primary incubation was 1 hour. Detected by chemiluminescence.