



UK Office

Everest Biotech Ltd

Cherwell Innovation Centre
77 Heyford Park
Upper Heyford
Oxfordshire
OX25 5HD
UK

Enquiries:

info@everestbiotech.com

Sales:

sales@everestbiotech.com

Tech support:

support@everestbiotech.com

Tel: +44 (0)1869 238326

www.everestbiotech.com

**Research Use Only. Not for
diagnostic or therapeutic use.**

EB11693 - Goat Anti-ORL1 / LOX1 / LOXIN Antibody

Size: 100µg specific antibody in 200µl



Target Protein

Principal Names: CLEC8A, C-type lectin domain family 8 member A, hLOX-1, lectin-type oxidized LDL r, LOX1, LOXIN, OLR1, OTTHUMP00000238950, OTTHUMP00000238954, OTTHUMP00000238955, OTTHUMP00000238958, oxidized low density lipoprotein (lectin-like) receptor 1, SCARE1, SLOX1

Official Symbol: OLR1

Accession Number(s): NP_002534.1; NP_001166103.1; NP_001166104.1

Human GeneID(s): [4973](#)

Important Comments: This antibody is expected to recognize all reported isoforms (NP_002534.1; NP_001166103.1; NP_001166104.1).

Immunogen

Peptide with sequence DLKIQTVKDPDEK-C, from the N Terminus of the protein sequence according to NP_002534.1; NP_001166103.1; NP_001166104.1.

Please note the [peptide](#) is available for sale.

Purification and Storage

Purified from goat serum by ammonium sulphate precipitation followed by antigen affinity chromatography using the immunizing peptide.

Supplied at 0.5 mg/ml in Tris saline, 0.02% sodium azide, pH7.3 with 0.5% bovine serum albumin.

Aliquot and store at -20°C. Minimize freezing and thawing.

Applications Tested

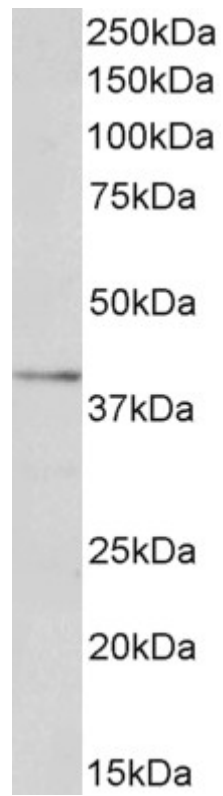
Peptide ELISA: antibody detection limit dilution 1:128000.

Western blot: Approx 40kDa band observed in Human Liver lysates (calculated MW of 30.9kDa according to NP_002534.1). The observed molecular weight corresponds to earlier findings in literature with different antibodies (Yoshida et al, Biochem J. 1998 Aug 15;334 (Pt 1):9-13. PMID: 9693095). Recommended concentration: 0.1-0.3µg/ml.

Species Reactivity

Tested: Human

Expected from sequence similarity: Human



EB11693 (0.1 μ g/ml) staining of Human Liver lysate (35 μ g protein in RIPA buffer). Primary incubation was 1 hour.
Detected by chemiluminescence.