



UK Office

Everest Biotech Ltd

Cherwell Innovation Centre
77 Heyford Park
Upper Heyford
Oxfordshire
OX25 5HD
UK

Enquiries:

info@everestbiotech.com

Sales:

sales@everestbiotech.com

Tech support:

support@everestbiotech.com

Tel: +44 (0)1869 238326

Fax: +44 (0)1869 238327

US Office

Everest Biotech c/o Abcore

405 Maple Street, Suite A106
Ramona,
CA 92065
USA

Inquiries:

info@everestbiotech.com

Sales:

usasales@everestbiotech.com

Tech support:

support@everestbiotech.com

Tel: 888-320-4628 (toll-free)

Fax: 888-841-9041

www.everestbiotech.com

**Research Use Only. Not for
diagnostic or therapeutic use.**

EB06825 - Goat Anti-Osteopontin / SPP1 Antibody

Size: 100µg specific antibody in 200µl



Target Protein

Principal Names: SPP1, HGNC:11255, secreted phosphoprotein 1 (osteopontin, bone sialoprotein I, early T-lymphocyte activation 1), BNSP, BSPI, ETA-1, MGC110940, OPN, Secreted phosphoprotein-1 (osteopontin, bone sialoprotein), secreted phosphoprotein 1, SPP1/CALPHA1 fusion, bone sialoprotein I, early T-lymphocyte activation 1, osteopontin, osteopontin/immunoglobulin alpha 1 heavy chain constant region fusion protein

Official Symbol: SPP1

Accession Number(s): NP_001035147.1; NP_000573.1; NP_001035149.1

Human GeneID(s): [6696](#)

Non-Human GeneID(s): 20750 (mouse)

Immunogen

Peptide with sequence C-DPKSKEEDKHLK, from the C Terminus of the protein sequence according to NP_001035147.1; NP_000573.1; NP_001035149.1.

Please note the [peptide](#) is available for sale.

Purification and Storage

Purified from goat serum by ammonium sulphate precipitation followed by antigen affinity chromatography using the immunizing peptide.

Supplied at 0.5 mg/ml in Tris saline, 0.02% sodium azide, pH7.3 with 0.5% bovine serum albumin.

Aliquot and store at -20°C. Minimize freezing and thawing.

Applications Tested

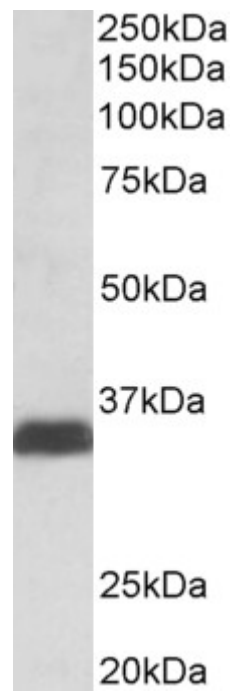
Peptide ELISA: antibody detection limit dilution 1:32000.

Western blot: Approx 35kDa band observed in lysates of cell line MOLT4. This band corresponds to the cleavage product from the 60kDa glycoprotein (calculated MW of 33.8kDa according to NP_000573.1). Recommended concentration: 0.1-0.3µg/ml.

Species Reactivity

Tested: Human

Expected from sequence similarity: Human, Mouse, Rat, Dog



EB06825 (0.1µg/ml) staining of lysates of cell line MOLT4 (35µg protein in RIPA buffer). Primary incubation was 1 hour. Detected by chemiluminescence.