

UK Office

Everest Biotech Ltd

Cherwell Innovation Centre
77 Heyford Park
Upper Heyford
Oxfordshire
OX25 5HD
UK

Enquiries:

info@everestbiotech.com

Sales:

sales@everestbiotech.com

Tech support:

support@everestbiotech.com

Tel: +44 (0)1869 238326

www.everestbiotech.com

**Research Use Only. Not for
diagnostic or therapeutic use.**

EB08654 - Goat Anti-OTUB2 Antibody

Size: 100µg specific antibody in 200µl



Target Protein

Principal Names: OTUB2, OTU domain, ubiquitin aldehyde binding 2, C14orf137, FLJ21916, MGC3102, OTB2, OTU2, ubiquitin-specific protease otubain 2

Official Symbol: OTUB2

Accession Number(s): NP_075601.1

Human GeneID(s): [78990](#)

Non-Human GeneID(s): 68149 (mouse), 314405 (rat)

Immunogen

Peptide with sequence C-YKTSHYNILYAADKH, from the internal region of the protein sequence according to NP_075601.1.

Please note the [peptide](#) is available for sale.

Purification and Storage

Purified from goat serum by ammonium sulphate precipitation followed by antigen affinity chromatography using the immunizing peptide.

Supplied at 0.5 mg/ml in Tris saline, 0.02% sodium azide, pH7.3 with 0.5% bovine serum albumin.

Aliquot and store at -20°C. Minimize freezing and thawing.

Applications Tested

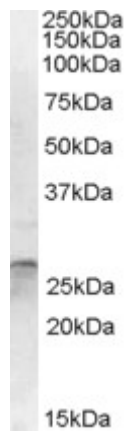
Peptide ELISA: antibody detection limit dilution 1:16000.

Western blot: Approx. 27kDa band observed in Human Brain (Cerebellum) lysates (calculated MW of 27.2kDa according to NP_075601.1). Recommended concentration: 1-3µg/ml.

Species Reactivity

Tested: Human

Expected from sequence similarity: Human, Mouse, Rat, Cow



EB08654 (1µg/ml) staining of Human Cerebellum lysate (35µg protein in RIPA buffer). Primary incubation was 1 hour. Detected by chemiluminescence.