



UK Office

Everest Biotech Ltd

Cherwell Innovation Centre
77 Heyford Park
Upper Heyford
Oxfordshire
OX25 5HD
UK

Enquiries:

info@everestbiotech.com

Sales:

sales@everestbiotech.com

Tech support:

support@everestbiotech.com

Tel: +44 (0)1869 238326

Fax: +44 (0)1869 238327

US Office

Everest Biotech c/o Abcore

405 Maple Street, Suite A106
Ramona,
CA 92065
USA

Inquiries:

info@everestbiotech.com

Sales:

usasales@everestbiotech.com

Tech support:

support@everestbiotech.com

Tel: 888-320-4628 (toll-free)

Fax: 888-841-9041

www.everestbiotech.com

**Research Use Only. Not for
diagnostic or therapeutic use.**

EB08990 - Goat Anti-OXTR Antibody

Size: 100µg specific antibody in 200µl



Target Protein

Principal Names: OXTR, oxytocin receptor, OT-R

Official Symbol: OXTR

Accession Number(s): NP_000907.2

Human GeneID(s): [5021](#)

Immunogen

Peptide with sequence C-RRLGETSASKKSN, from the C Terminus of the protein sequence according to NP_000907.2.

Please note the [peptide](#) is available for sale.

Purification and Storage

Purified from goat serum by ammonium sulphate precipitation followed by antigen affinity chromatography using the immunizing peptide.

Supplied at 0.5 mg/ml in Tris saline, 0.02% sodium azide, pH7.3 with 0.5% bovine serum albumin.

Aliquot and store at -20°C. Minimize freezing and thawing.

Applications Tested

Peptide ELISA: antibody detection limit dilution 1:16000.

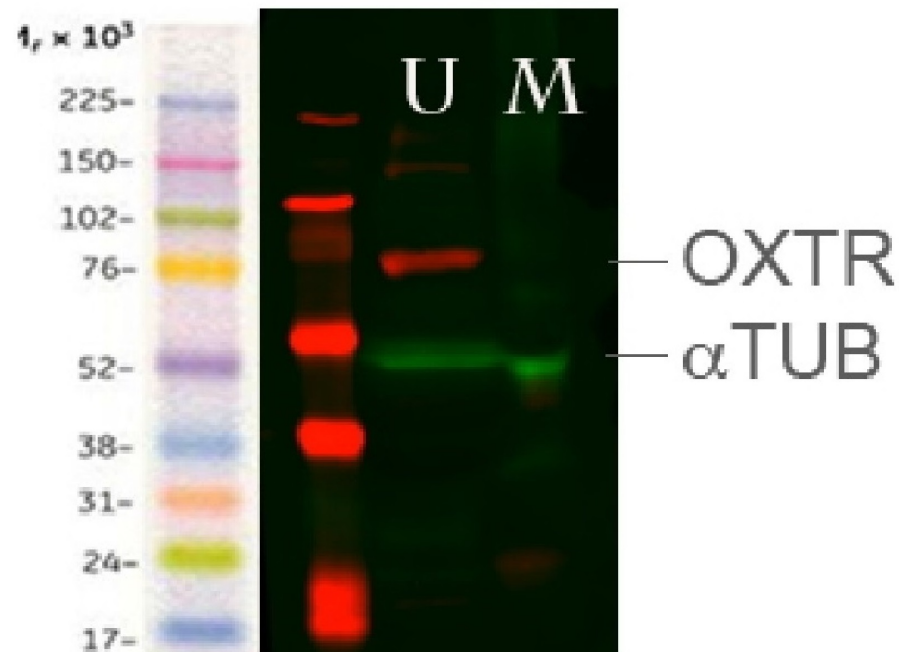
Western blot: Approx 75kDa band observed in Rat Uterus lysates, but none in Rat Skeletal Muscle lysates as expected (calculated MW of 42.9kDa according to Rat NP_037003.2. The observed molecular weight corresponds to earlier findings in literature with different antibodies (Whittington et al, Cell Tissue Res. 2004 Nov;318(2):375-82. PMID: 15459766). Recommended concentration: 1-3µg/ml. Primary incubation was 1 hour.

IHC: In paraffin embedded Human Prostate Cancer shows staining of the stromal component of smooth muscle. Recommended concentration: 2-4µg/ml.

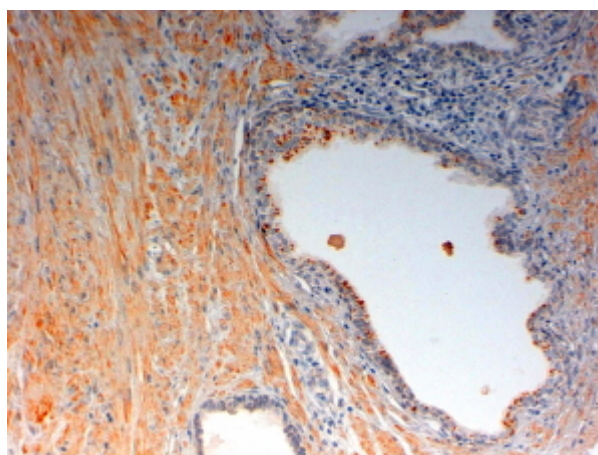
Species Reactivity

Tested: Human, Rat

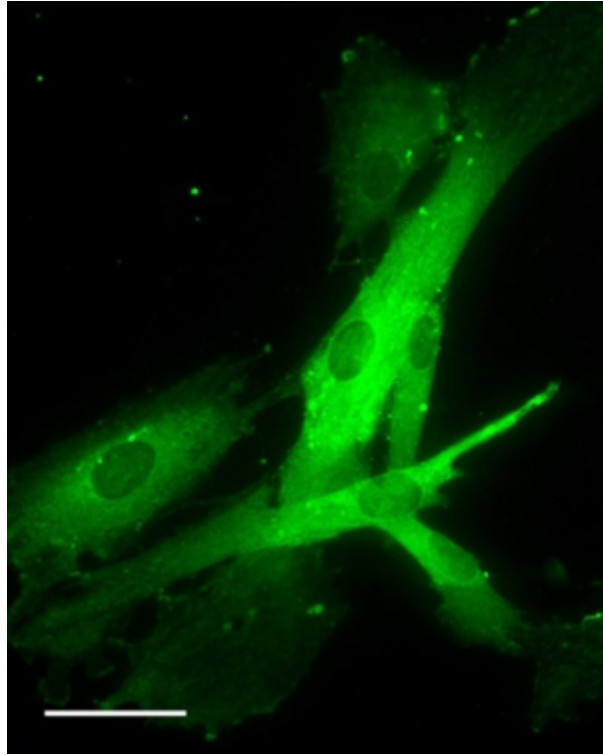
Expected from sequence similarity: Human



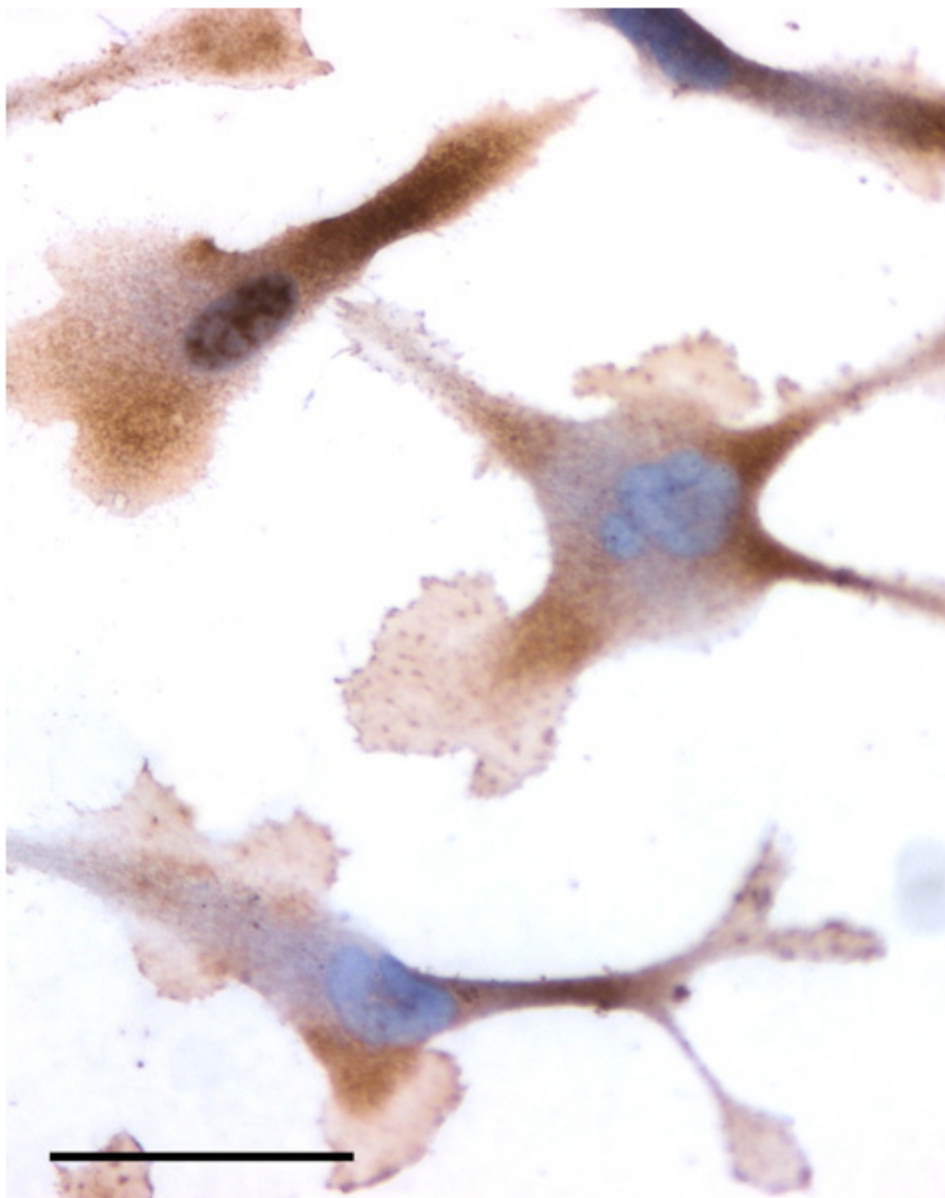
EB08990 (0.5 μ g/ml) staining of Rat Uterus (U) and Rat Skeletal Muscle (M) lysates (35 μ g protein in RIPA buffer). Data obtained from Maree Gould, University of Otago, New Zealand. Detected by chemiluminescence.



EB08990 (2 μ g/ml) staining of paraffin embedded Human Prostate Cancer. Steamed antigen retrieval with citrate buffer pH 6, HRP-staining.



EB08990 (5 μ g/ml) staining of Human Prostate stromal cells. Overnight incubation at 4C and detected with Alexafluor secondary conjugated antibody. **This data is from a previous batch, not on sale.**



EB08990 (5µg/ml) staining of PC3 cells. Detected by DAB. **This data is from a previous batch, not on sale.**