

UK Office

Everest Biotech Ltd

Cherwell Innovation Centre
77 Heyford Park
Upper Heyford
Oxfordshire
OX25 5HD
UK

Enquiries:

info@everestbiotech.com

Sales:

sales@everestbiotech.com

Tech support:

support@everestbiotech.com

Tel: +44 (0)1869 238326

www.everestbiotech.com

**Research Use Only. Not for
diagnostic or therapeutic use.**

EB11215 - Goat Anti-p15INK4b (isoform 2) Antibody

Size: 100µg specific antibody in 200µl



Target Protein

Principal Names: CDK inhibitory protein, CDK4B inhibitor, CDK4I, cyclin-dependent kinase 4 inhibitor B, cyclin-dependent kinase inhibitor 2B (p15, inhibits CDK4), cyclin-dependent kinases 4 and 6 binding protein, INK4B, MTS2, MTS-2, multiple tumor suppressor 2, p14_CDK inhibitor, p14_INK4B, p14-INK4b, P15, p15 CDK inhibitor, p15_INK4B, p15INK4b, p15-INK4b, TP15, CDKN2B

Official Symbol: CDKN2B

Accession Number(s): NP_004927.2; NP_511042.1

Human GeneID(s): [1030](#)

Important Comments: This antibody is expected to recognize isoform 2 (NP_511042.1) only.

Immunogen

Peptide with sequence C-RQGARERGERP, from the C Terminus of the protein sequence according to NP_004927.2; NP_511042.1.

Please note the [peptide](#) is available for sale.

Purification and Storage

Purified from goat serum by ammonium sulphate precipitation followed by antigen affinity chromatography using the immunizing peptide.

Supplied at 0.5 mg/ml in Tris saline, 0.02% sodium azide, pH7.3 with 0.5% bovine serum albumin.

Aliquot and store at -20°C. Minimize freezing and thawing.

Applications Tested

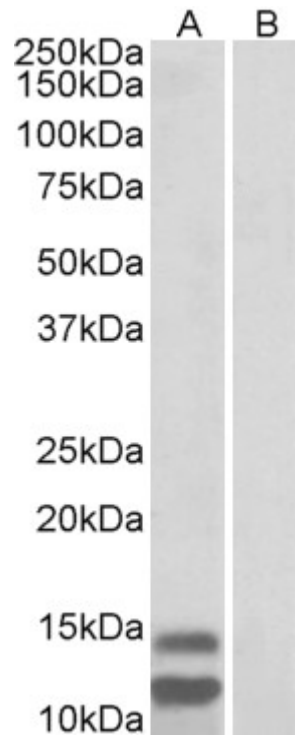
Peptide ELISA: antibody detection limit dilution 1:128000.

Western blot: Approx 12+14kDa bands observed in Human Gastrointestinal cancer lysates (calculated MW of 8.1kDa according to NP_511042.1). The observed 14kDa cannot represent isoform 1 and therefore it most likely represents another posttranslational modification of isoform 2. Recommended concentration: 1-3µg/ml.

Species Reactivity

Tested: Human

Expected from sequence similarity: Human



EB11215 (1 μ g/ml) staining of Human Gastrointestinal cancer lysate (35 μ g protein in RIPA buffer) with (B) and without (A) blocking with the immunizing peptide. Primary incubation was 1 hour. Detected by chemiluminescence.