



## UK Office

### Everest Biotech Ltd

Cherwell Innovation Centre  
77 Heyford Park  
Upper Heyford  
Oxfordshire  
OX25 5HD  
UK

Enquiries:

[info@everestbiotech.com](mailto:info@everestbiotech.com)

Sales:

[sales@everestbiotech.com](mailto:sales@everestbiotech.com)

Tech support:

[support@everestbiotech.com](mailto:support@everestbiotech.com)

Tel: +44 (0)1869 238326

Fax: +44 (0)1869 238327

## US Office

### Everest Biotech c/o Abcore

405 Maple Street, Suite A106  
Ramona,  
CA 92065  
USA

Inquiries:

[info@everestbiotech.com](mailto:info@everestbiotech.com)

Sales:

[usasales@everestbiotech.com](mailto:usasales@everestbiotech.com)

Tech support:

[support@everestbiotech.com](mailto:support@everestbiotech.com)

Tel: 888-320-4628 (toll-free)

Fax: 888-841-9041

[www.everestbiotech.com](http://www.everestbiotech.com)

**Research Use Only. Not for  
diagnostic or therapeutic use.**

## EB05061 - Goat Anti-P27KIP1 / CDKN1B (C Terminus) Antibody

Size: 100µg specific antibody in 200µl



### Target Protein

**Principal Names:** CDKN1B, P27KIP1, cyclin-dependent kinase inhibitor 1B (p27, Kip1), KIP1, CDKN4, cyclin-dependent kinase inhibitor 1B, p27(KIP1), KIP1, p27, MEN1B, MEN4, P27KIP1

**Official Symbol:** CDKN1B

**Accession Number(s):** NP\_004055.1

**Human GeneID(s):** [1027](#)

**Non-Human GeneID(s):** 12576 (mouse), 83571 (rat)

### Immunogen

Peptide with sequence C-EQTPKKPGLRRRQT, from the C Terminus of the protein sequence according to NP\_004055.1.

Please note the [peptide](#) is available for sale.

### Purification and Storage

Purified from goat serum by ammonium sulphate precipitation followed by antigen affinity chromatography using the immunizing peptide.

Supplied at 0.5 mg/ml in Tris saline, 0.02% sodium azide, pH7.3 with 0.5% bovine serum albumin.

Aliquot and store at -20°C. Minimize freezing and thawing.

### Applications Tested

**Peptide ELISA:** antibody detection limit dilution 1:32000.

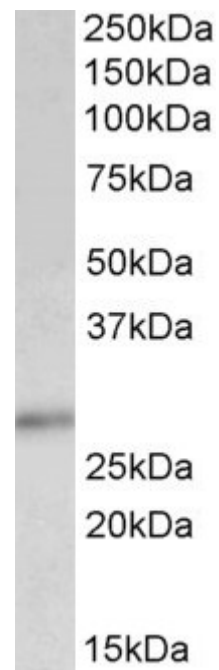
**Western blot:** Approx 26-27kDa band observed in Human Breast and Prostate lysates (calculated MW of 22.1kDa according to NP\_004055.1). The observed molecular weight corresponds to earlier findings in literature (Xia et al, Proc Natl Acad Sci U S A. 2005 Sep 27;102(39):14028-33; PMID: 16169901). Recommended concentration: 0.5-1.5µg/ml.

**Immunoprecipitation:** This antibody was deemed fit for IP under native conditions (observations from anonymous customer).

### Species Reactivity

**Tested:** Human

**Expected from sequence similarity:** Human, Mouse, Rat, Cow, Dog



EB05061 (0.5µg/ml) staining of Human Breast lysate (35µg protein in RIPA buffer). Primary incubation was 1 hour. Detected by chemiluminescence.