

## UK Office

### Everest Biotech Ltd

Cherwell Innovation Centre  
77 Heyford Park  
Upper Heyford  
Oxfordshire  
OX25 5HD  
UK

Enquiries:

[info@everestbiotech.com](mailto:info@everestbiotech.com)

Sales:

[sales@everestbiotech.com](mailto:sales@everestbiotech.com)

Tech support:

[support@everestbiotech.com](mailto:support@everestbiotech.com)

Tel: +44 (0)1869 238326

[www.everestbiotech.com](http://www.everestbiotech.com)

**Research Use Only. Not for  
diagnostic or therapeutic use.**

## EB10589 - Goat Anti-p47phox (mouse) Antibody

Size: 100µg specific antibody in 200µl



### Target Protein

**Principal Names:** Ncf1, neutrophil cytosolic factor 1, NOXO2, Ncf-1, p47<phox>, p47phox, 47 kDa neutrophil oxidase factor, NADPH oxidase subunit (47 kD), NADPH oxidase subunit (47kDa), OTTMUSP00000022112, neutrophil NADPH oxidase factor 1, neutrophil cytosol facto

**Official Symbol:** Ncf1

**Accession Number(s):** NP\_035006.3

**Human GeneID(s):** [653361](#)

**Non-Human GeneID(s):** 17969 (mouse), 114553 (rat)

### Immunogen

Peptide with sequence C-DEAEDPDPNYAGEP, from the internal region of the protein sequence according to NP\_035006.3.

Please note the [peptide](#) is available for sale.

### Purification and Storage

Purified from goat serum by ammonium sulphate precipitation followed by antigen affinity chromatography using the immunizing peptide.

Supplied at 0.5 mg/ml in Tris saline, 0.02% sodium azide, pH7.3 with 0.5% bovine serum albumin.

Aliquot and store at -20°C. Minimize freezing and thawing.

### Applications Tested

**Peptide ELISA:** antibody detection limit dilution 1:2000.

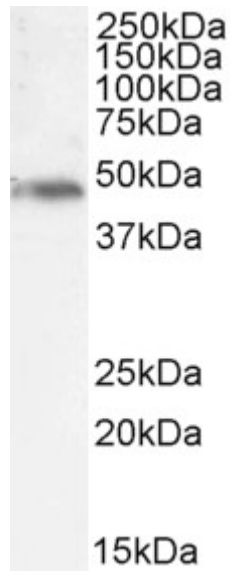
**Western blot:** Approx 48kDa band observed in lysates of cell line Daudi and in preliminary testing of Mouse Spleen lysate (calculated MW of 44.7kDa according to Human NP\_000256.4. This molecular weight is routinely observed by other sources. Recommended concentration: 1-3µg/ml. Primary incubation 1 hour at room temperature.

**Immunofluorescence:** Expression of the protein seen in the cytoplasm and plasma membrane of NIH3T3 and RAW264.7 cells. Recommended concentration: 10µg/ml.

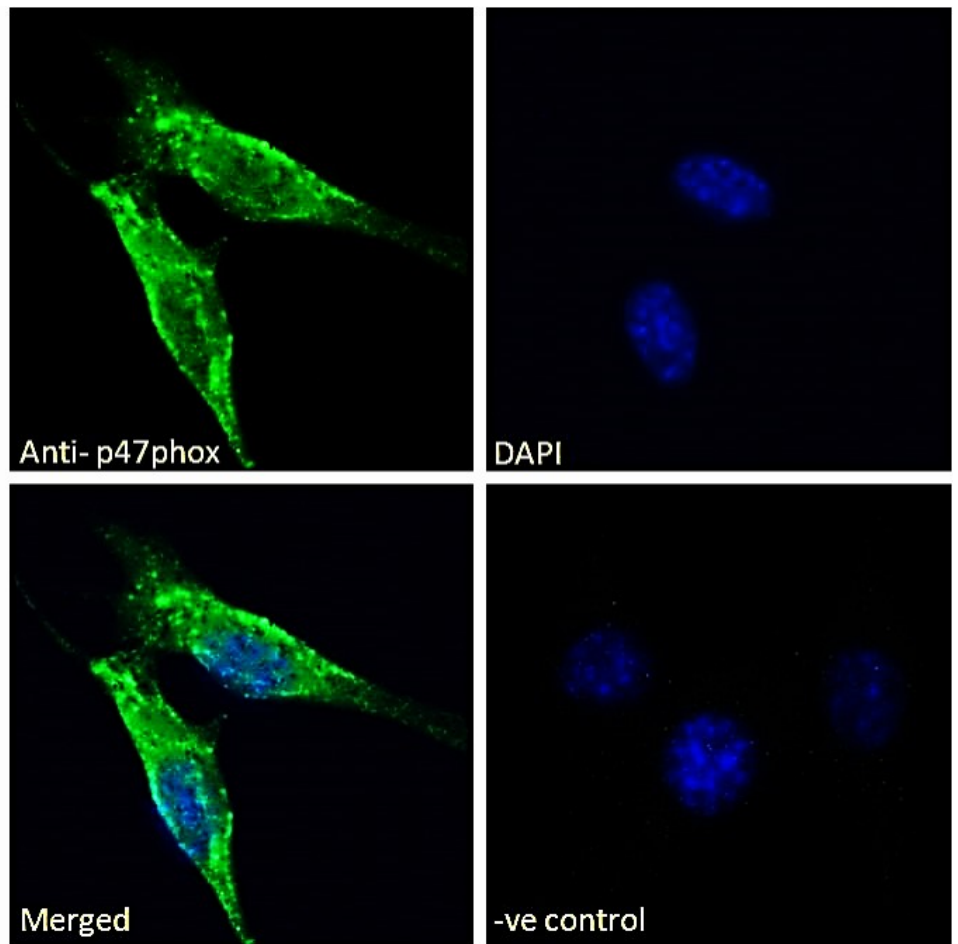
### Species Reactivity

**Tested:** Human, Mouse

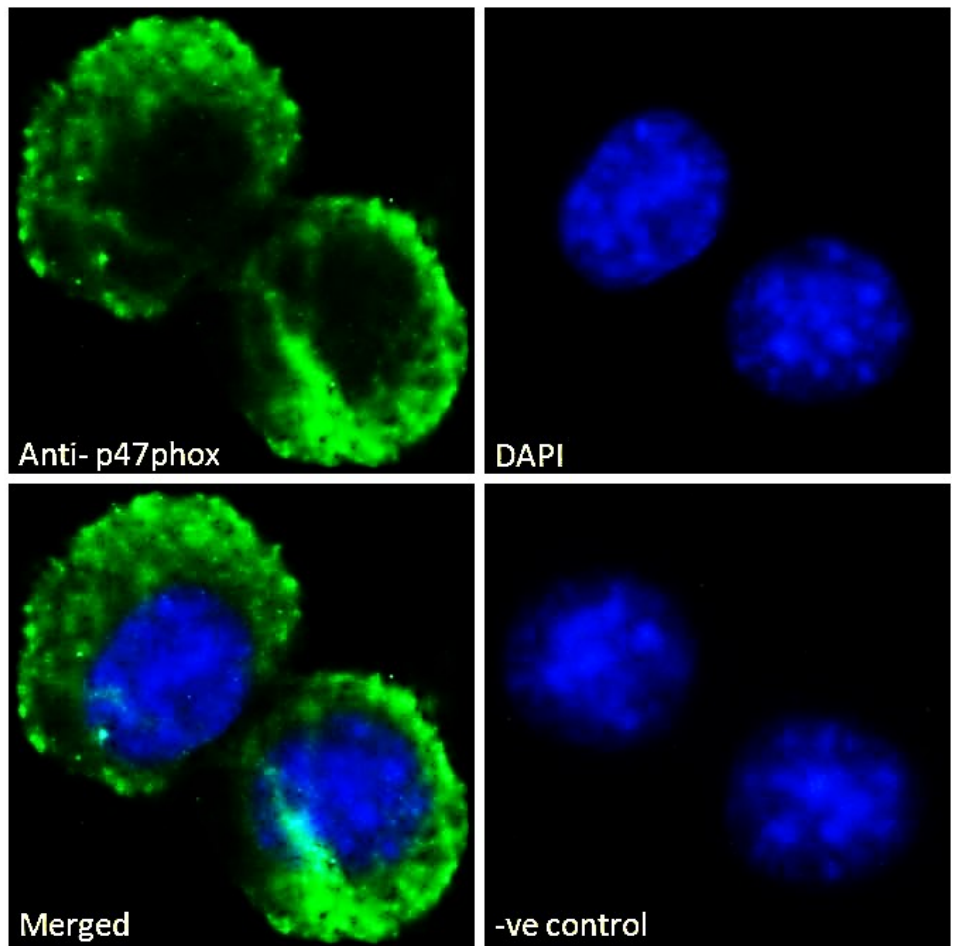
**Expected from sequence similarity:** Human, Mouse, Rat, Dog, Pig, Cow



EB10589 (1 $\mu$ g/ml) staining of Daudi cell lysate (35 $\mu$ g protein in RIPA buffer). Detected by chemiluminescence.



EB10589 Immunofluorescence analysis of paraformaldehyde fixed NIH3T3 cells, permeabilized with 0.15% Triton. Primary incubation 1hr (10 $\mu$ g/ml) followed by Alexa Fluor 488 secondary antibody (2 $\mu$ g/ml), showing cytoplasmic and plasma membrane staining. The nuclear stain is DAPI (blue). Negative control: Unimmunized goat IgG (10 $\mu$ g/ml) followed by Alexa Fluor 488 secondary antibody (2 $\mu$ g/ml).



EB10589 Immunofluorescence analysis of paraformaldehyde fixed RAW264.7 cells, permeabilized with 0.15% Triton. Primary incubation 1hr (10ug/ml) followed by Alexa Fluor 488 secondary antibody (2ug/ml), showing cytoplasmic and plasma membrane staining. The nuclear stain is DAPI (blue). Negative control: Unimmunized goat IgG (10ug/ml) followed by Alexa Fluor 488 secondary antibody (2ug/ml).