

## UK Office

### Everest Biotech Ltd

Cherwell Innovation Centre  
77 Heyford Park  
Upper Heyford  
Oxfordshire  
OX25 5HD  
UK

Enquiries:

[info@everestbiotech.com](mailto:info@everestbiotech.com)

Sales:

[sales@everestbiotech.com](mailto:sales@everestbiotech.com)

Tech support:

[support@everestbiotech.com](mailto:support@everestbiotech.com)

Tel: +44 (0)1869 238326

Fax: +44 (0)1869 238327

## US Office

### Everest Biotech c/o Abcore

405 Maple Street, Suite A106  
Ramona,  
CA 92065  
USA

Inquiries:

[info@everestbiotech.com](mailto:info@everestbiotech.com)

Sales:

[usasales@everestbiotech.com](mailto:usasales@everestbiotech.com)

Tech support:

[support@everestbiotech.com](mailto:support@everestbiotech.com)

Tel: 888-320-4628 (toll-free)

Fax: 888-841-9041

[www.everestbiotech.com](http://www.everestbiotech.com)

**Research Use Only. Not for  
diagnostic or therapeutic use.**

## EB06720-T - Goat Anti-PAI1 / SERPINE1 Antibody - Trial

Size: 20µg specific antibody in 40µl



## Target Protein

**Principal Names:** SERPINE1, PAI1, PAI, PAI-1, PLANH1, serine (or cysteine) proteinase inhibitor, clade E (nexin, plasminogen activator inhibitor type 1), member 1, plasminogen activator inhibitor, type I, serpin peptidase inhibitor, clade E (nexin, plasminogen activator inhibitor type 1), member 1, plasminogen activator inhibitor-1, endothelial plasminogen activator inhibitor, plasminogen activator inhibitor, type I, plasminogen activator inhibitor-1, serpin E1, SERPINE1

**Official Symbol:** SERPINE1

**Accession Number(s):** NP\_000593.1

**Human GeneID(s):** [5054](#)

## Immunogen

Peptide with sequence C-GFKIDDKGMALRH, from the internal region of the protein sequence according to NP\_000593.1.

Please note the [peptide](#) is available for sale.

## Purification and Storage

Purified from goat serum by ammonium sulphate precipitation followed by antigen affinity chromatography using the immunizing peptide.

Supplied at 0.5 mg/ml in Tris saline, 0.02% sodium azide, pH7.3 with 0.5% bovine serum albumin.

Aliquot and store at -20°C. Minimize freezing and thawing.

## Applications Tested

**Peptide ELISA:** antibody detection limit dilution 1:64000.

**Western blot:** Approx 48kDa band observed in Human Liver and HeLa lysates, while approx. 45kDa observed in lysates of cell lines A549 and HepG2 (calculated MW of 45.1kDa according to NP\_000593.1). This molecular weight is routinely observed by other sources. Recommended concentration: 0.1-0.3µg/ml. Primary incubation was 1 hour.

**IHC:** In paraffin embedded Human Placenta shows strong staining of cytotrophoblasts. Recommended concentration: 4-6µg/ml. A customer successfully used this product on Human Breast cancer.

## Species Reactivity

**Tested:** Human

**Expected from sequence similarity:** Human, Dog

## Specific Reference

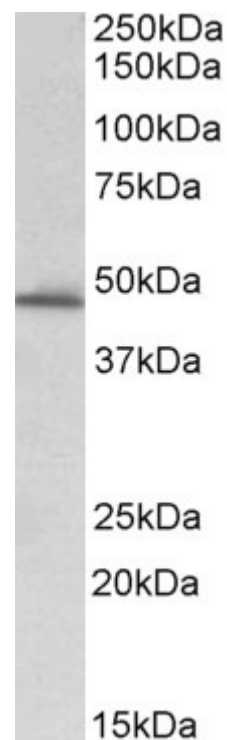
**This antibody has been successfully used in the following paper:**

Kozaczuk A, Selmi A, Bednarek R.

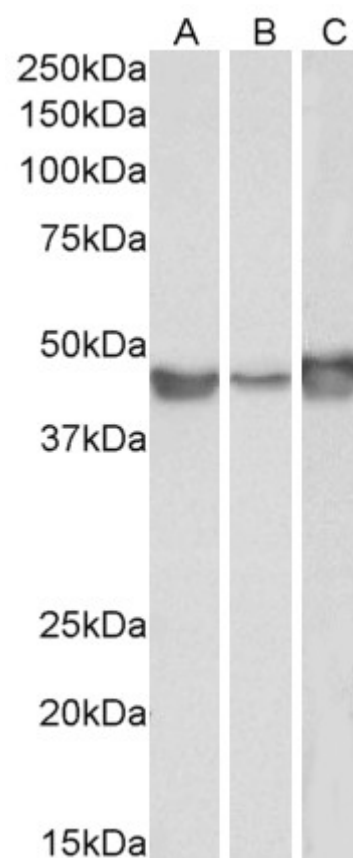
Bacterial expression, purification and angiogenesis-promoting activity of human thymosin β4.

Protein Expr Purif. 2013 Aug;90(2):142-52.

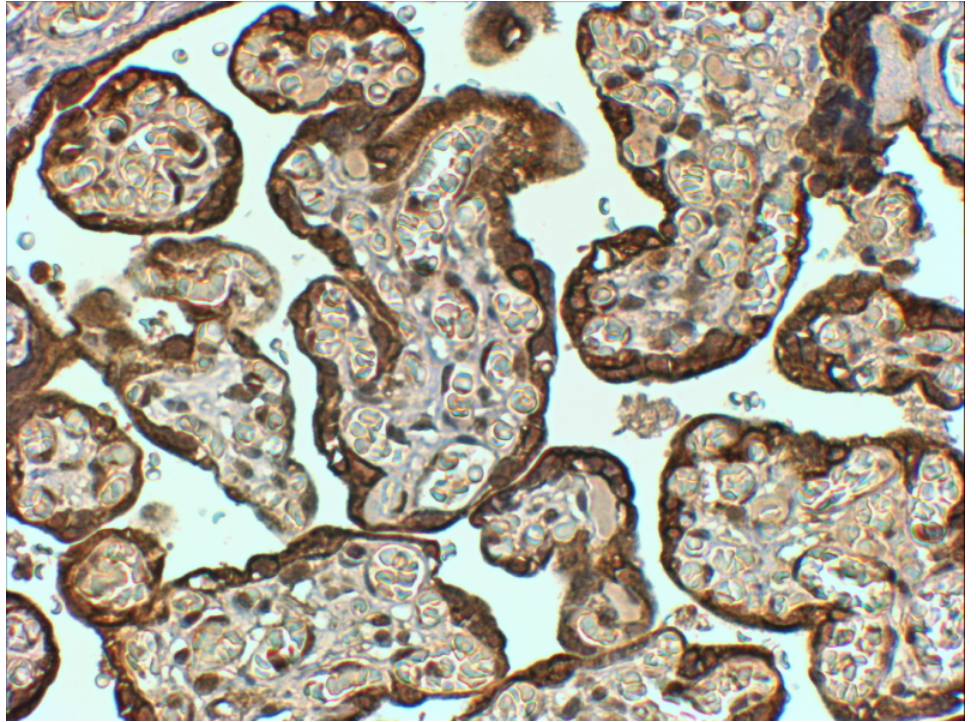
PMID: 23769831



EB06720 (0.3 $\mu$ g/ml) staining of Human Liver lysate (35 $\mu$ g protein in RIPA buffer). Detected by chemiluminescence.



EB06720 (0.1 $\mu$ g/ml) staining of A549 (A), HepG2 (B) and HeLa (C) lysates (35 $\mu$ g protein in RIPA buffer). Detected by chemiluminescence.



EB06720 (4µg/ml) staining of paraffin embedded Human Placenta. Steamed antigen retrieval with Tris/EDTA buffer pH 9, HRP-staining.