



Everest Biotech Ltd  
Cherwell Innovation Centre  
77 Heyford Park  
Upper Heyford  
Oxfordshire  
OX25 5HD, United Kingdom

[everestbiotech.com](http://everestbiotech.com)

[sales@everestbiotech.com](mailto:sales@everestbiotech.com)

[support@everestbiotech.com](mailto:support@everestbiotech.com)

Tel +44 1869 238326

Fax +44 1869 238327

**Research Use Only. Not for diagnostic or therapeutic use.**

Storage: For long-term storage keep aliquots at -20°C. (Store no longer than 12 months at 4°C). Minimize freezing and thawing.

## EB06720 - Goat Anti-PAI1 / SERPINE1 Antibody

Size: 100µg specific antibody in 200µl



### Target Protein

**Principal Names:** plasminogen activator inhibitor-1, serpin peptidase inhibitor, clade E (nexin, plasminogen activator inhibitor type 1), member 1, plasminogen activator inhibitor, type I, serine (or cysteine) proteinase inhibitor, clade E (nexin, plasminogen activator inhibitor type 1), member 1, PLANH1, PAI-1, PAI, PAI1, SERPINE1

**Official Symbol:** SERPINE1

**Accession Number(s):** NP\_000593.1; NP\_001158885.1

**Human GeneID(s):** [5054](#)

**Important Comments:** This antibody is expected to recognise both reported isoforms.

### Immunogen

Peptide with sequence C-GFKIDDKGMALRH, from the internal region of the protein sequence according to NP\_000593.1; NP\_001158885.1.

Please note the [peptide](#) is available for sale.

### Purification and Storage

Purified from goat serum by ammonium sulphate precipitation followed by antigen affinity chromatography using the immunizing peptide.

Supplied at 0.5 mg/ml in Tris saline, 0.02% sodium azide, pH7.3 with 0.5% bovine serum albumin.

Aliquot and store at -20°C. Minimize freezing and thawing.

### Applications Tested

**Peptide ELISA:** antibody detection limit dilution 1:64000.

**Western blot:** Approx 48kDa band observed in Human Liver and Human Lungs lysates (calculated MW of 45.1kDa according to NP\_000593.1). The observed molecular weight corresponds to earlier findings with different antibodies from other commercial sources. Recommended concentration: 0.3-1.0µg/ml.

**IHC:** In paraffin embedded Human Placenta shows strong staining of cytotrophoblasts. Recommended concentration, 4-6µg/ml. A customer successfully used this product on Human Breast cancer.

**Enzyme immunoassay:** Sandwich-type ELISA with increasing amount of recombinant PAI1 captured by a rabbit antibody. Recommended reporter concentration: 1.5-3µg/ml

### Species Reactivity

**Tested:** Human

**Expected from sequence similarity:** Human, Dog

### Specific Reference

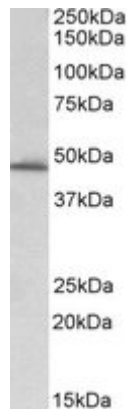
The goat polyclonal antibody used in this paper was manufactured by us:

Keates AC, Tummala S, Peek RM Jr, Csizmadia E, Kunzli B, Becker K, Correa P, Romero-Gallo J, Piazzuelo MB, Sheth S, Kelly CP, Robson SC, Keates S.

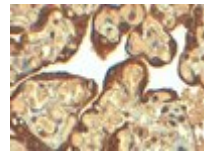
Helicobacter pylori infection stimulates plasminogen activator inhibitor 1 production by gastric epithelial cells.

Infect Immun. 2008 Sep;76(9):3992-9.

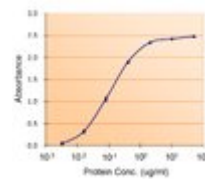
**PMID:** 18519558



EB06720 (0.3 $\mu$ g/ml) staining of Human Liver lysate (35 $\mu$ g protein in RIPA buffer). Primary incubation was 1 hour. Detected by chemiluminescence.



EB06720 (4 $\mu$ g/ml) staining of paraffin embedded Human Placenta. Steamed antigen retrieval with citrate buffer pH 6, HRP-staining.



EB6720 (1.5 $\mu$ g/ml) as the reporter with EB002011 as the capture rabbit antibody (2.5 $\mu$ g/ml).