

UK Office

Everest Biotech Ltd

Cherwell Innovation Centre
77 Heyford Park
Upper Heyford
Oxfordshire
OX25 5HD
UK

Enquiries:

info@everestbiotech.com

Sales:

sales@everestbiotech.com

Tech support:

support@everestbiotech.com

Tel: +44 (0)1869 238326

www.everestbiotech.com

**Research Use Only. Not for
diagnostic or therapeutic use.**

EB07367 - Goat Anti-PAK1 Antibody

Size: 100µg specific antibody in 200µl



Target Protein

Principal Names: PAK1, p21/Cdc42/Rac1-activated kinase 1 (STE20 homolog, yeast), MGC130000, MGC130001, PAKalpha, p21-activated kinase 1, p21/Cdc42/Rac1-activated kinase 1 (yeast Ste20-related)

Official Symbol: PAK1

Accession Number(s): NP_002567.3

Human GeneID(s): [5058](#)

Non-Human GeneID(s): 18479 (mouse), 29431 (rat)

Important Comments: No cross-reactivity expected with PAK3

Immunogen

Peptide with sequence C-NTEKQKKKPKMSDE, from the internal region of the protein sequence according to NP_002567.3.

Please note the [peptide](#) is available for sale.

Purification and Storage

Purified from goat serum by ammonium sulphate precipitation followed by antigen affinity chromatography using the immunizing peptide.

Supplied at 0.5 mg/ml in Tris saline, 0.02% sodium azide, pH7.3 with 0.5% bovine serum albumin.

Aliquot and store at -20°C. Minimize freezing and thawing.

Applications Tested

Peptide ELISA: antibody detection limit dilution 1:1000.

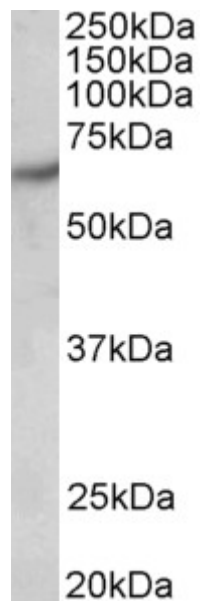
Western blot: Approx 65kDa band observed in Human Brain (Cerebral Cortex and Hippocampus) lysates (calculated MW of 60.6kDa according to NP_002567.3).

Recommended concentration: 0.5-1.5µg/ml.

Species Reactivity

Tested: Human, Mouse, Rat

Expected from sequence similarity: Human, Mouse, Rat, Dog



EB07367 (0.5 μ g/ml) staining of Human Brain (Cerebral Cortex) lysate (35 μ g protein in RIPA buffer). Primary incubation was 1 hour. Detected by chemiluminescence.