



UK Office

Everest Biotech Ltd

Cherwell Innovation Centre
77 Heyford Park
Upper Heyford
Oxfordshire
OX25 5HD
UK

Enquiries:

info@everestbiotech.com

Sales:

sales@everestbiotech.com

Tech support:

support@everestbiotech.com

Tel: +44 (0)1869 238326

Fax: +44 (0)1869 238327

US Office

Everest Biotech c/o Abcore

405 Maple Street, Suite A106
Ramona,
CA 92065
USA

Inquiries:

info@everestbiotech.com

Sales:

usasales@everestbiotech.com

Tech support:

support@everestbiotech.com

Tel: 888-320-4628 (toll-free)

Fax: 888-841-9041

www.everestbiotech.com

**Research Use Only. Not for
diagnostic or therapeutic use.**

EB05946 - Goat Anti-Pallidin Antibody

Size: 100µg specific antibody in 200µl



Target Protein

Principal Names: pallidin homolog (mouse), pallidin, PLDN, PA, PALLID, pallid (mouse) homolog, pallidin, syntaxin 13 binding protein 1, syntaxin 13-interacting protein pallid

Official Symbol: BLOC1S6

Accession Number(s): NP_036520.1

Human GeneID(s): [26258](#)

Immunogen

Peptide with sequence C-EREKQLTARPAKRM, from the C Terminus of the protein sequence according to NP_036520.1.

Please note the [peptide](#) is available for sale.

Purification and Storage

Purified from goat serum by ammonium sulphate precipitation followed by antigen affinity chromatography using the immunizing peptide.

Supplied at 0.5 mg/ml in Tris saline, 0.02% sodium azide, pH7.3 with 0.5% bovine serum albumin.

Aliquot and store at -20°C. Minimize freezing and thawing.

Applications Tested

Peptide ELISA: antibody detection limit dilution 1:32000.

Western blot: Approx 23-24kDa band observed in lysates of cell line A431 (calculated MW of 19.7kDa according to NP_036520.1). In transfected HEK293 transiently expressing PLDN a band of approx. 28kDa is observed. This band is not observed in the non-transfected HEK293. Recommended concentration: 1-3µg/ml.

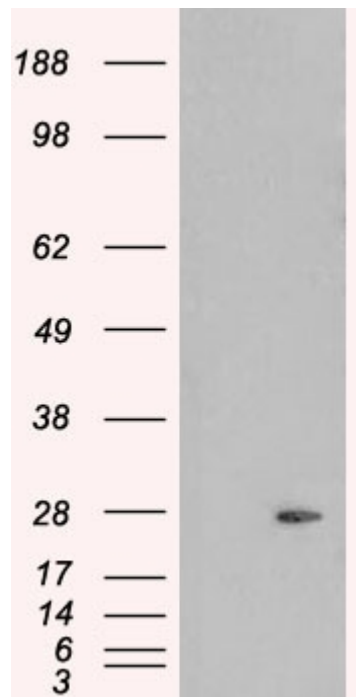
Species Reactivity

Tested: Human

Expected from sequence similarity: Human, Mouse, Rat, Pig, Cow



EB05946 staining (1 μ g/ml) of A431 lysate (RIPA buffer, 35 μ g total protein per lane). Primary incubated for 1 hour. Detected by western blot using chemiluminescence.



HEK293 overexpressing PLDN (RC201514) and probed with EB05946 (mock transfection in first lane), tested by Origene.