



UK Office

Everest Biotech Ltd

Cherwell Innovation Centre
77 Heyford Park
Upper Heyford
Oxfordshire
OX25 5HD
UK

Enquiries:

info@everestbiotech.com

Sales:

sales@everestbiotech.com

Tech support:

support@everestbiotech.com

Tel: +44 (0)1869 238326

Fax: +44 (0)1869 238327

US Office

Everest Biotech c/o Abcore

405 Maple Street, Suite A106
Ramona,
CA 92065
USA

Inquiries:

info@everestbiotech.com

Sales:

usasales@everestbiotech.com

Tech support:

support@everestbiotech.com

Tel: 888-320-4628 (toll-free)

Fax: 888-841-9041

www.everestbiotech.com

**Research Use Only. Not for
diagnostic or therapeutic use.**

EB10938 - Goat Anti-PAPD5 (aa497-510) Antibody

Size: 100µg specific antibody in 200µl



Target Protein

Principal Names: PAPD5, PAP associated domain containing 5, FLJ40270, TRF4-2, PAP-associated domain-containing protein 5, TUTase 3, terminal uridylyltransferase 3, topoisomerase-related function protein 4-2

Official Symbol: TENT4B

Accession Number(s): NP_001035374.2; NP_001035375.2

Human GeneID(s): [64282](#)

Non-Human GeneID(s): 214627 (mouse), 307745 (rat)

Important Comments: This antibody is expected to recognize both reported isoforms (NP_001035374.2; NP_001035375.2).

Immunogen

Peptide with sequence C-TDEVATYRDWISKQ, from the internal region of the protein sequence according to NP_001035374.2; NP_001035375.2.

Please note the [peptide](#) is available for sale.

Purification and Storage

Purified from goat serum by ammonium sulphate precipitation followed by antigen affinity chromatography using the immunizing peptide.

Supplied at 0.5 mg/ml in Tris saline, 0.02% sodium azide, pH7.3 with 0.5% bovine serum albumin.

Aliquot and store at -20°C. Minimize freezing and thawing.

Applications Tested

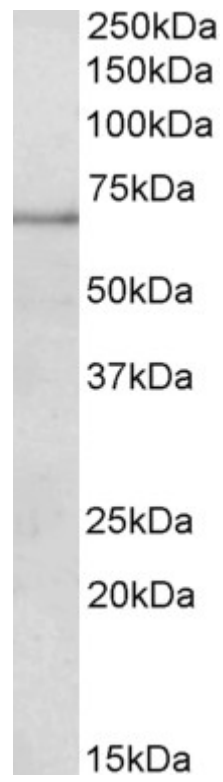
Peptide ELISA: antibody detection limit dilution 1:32000.

Western blot: Approx 70kDa band observed in Mouse and Rat Spleen lysates (calculated MW of 69.4kDa according to Mouse NP_001157971.1. Recommended concentration: 0.2-0.6µg/ml.

Species Reactivity

Tested: Mouse, Rat

Expected from sequence similarity: Human, Mouse, Rat, Cow



EB10938 (0.2 μ g/ml) staining of Mouse Spleen lysate (35 μ g protein in RIPA buffer). Primary incubation was 1 hour. Detected by chemiluminescence.