

## UK Office

### Everest Biotech Ltd

Cherwell Innovation Centre  
77 Heyford Park  
Upper Heyford  
Oxfordshire  
OX25 5HD  
UK

Enquiries:

[info@everestbiotech.com](mailto:info@everestbiotech.com)

Sales:

[sales@everestbiotech.com](mailto:sales@everestbiotech.com)

Tech support:

[support@everestbiotech.com](mailto:support@everestbiotech.com)

Tel: +44 (0)1869 238326

[www.everestbiotech.com](http://www.everestbiotech.com)

**Research Use Only. Not for  
diagnostic or therapeutic use.**

## EB10875 - Goat Anti-PAPD5 (aa78-90) Antibody

Size: 100µg specific antibody in 200µl



### Target Protein

**Principal Names:** PAPD5, PAP associated domain containing 5, FLJ40270, TRF4-2, PAP-associated domain-containing protein 5, TUTase 3, terminal uridylyltransferase 3, topoisomerase-related function protein 4-2

**Official Symbol:** TENT4B

**Accession Number(s):** NP\_001035374.2; NP\_001035375.2

**Human GeneID(s):** [64282](#)

**Non-Human GeneID(s):** 214627 (mouse)

**Important Comments:** This antibody is expected to recognize both reported isoforms (NP\_001035374.2; NP\_001035375.2).

### Immunogen

Peptide with sequence C-HALPAEQRDFLP, from the internal region of the protein sequence according to NP\_001035374.2; NP\_001035375.2.

Please note the [peptide](#) is available for sale.

### Purification and Storage

Purified from goat serum by ammonium sulphate precipitation followed by antigen affinity chromatography using the immunizing peptide.

Supplied at 0.5 mg/ml in Tris saline, 0.02% sodium azide, pH7.3 with 0.5% bovine serum albumin.

Aliquot and store at -20°C. Minimize freezing and thawing.

### Applications Tested

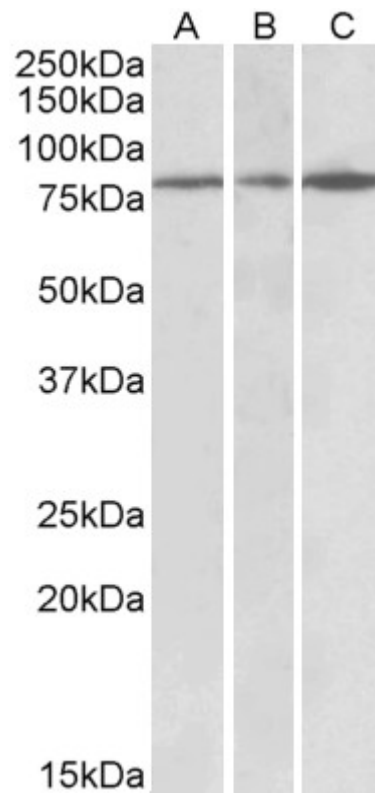
**Peptide ELISA:** antibody detection limit dilution 1:64000.

**Western blot:** Approx 75-80kDa band observed in Human and Mouse Brain lysates (calculated MW of 75.8kDa according to Human NP\_001035374.2 and 74.2kDa according to Mouse NP\_001157969.1). Recommended concentration: 0.3-1µg/ml. Primary incubation was 1 hour.

### Species Reactivity

**Tested:** Human, Mouse

**Expected from sequence similarity:** Human, Mouse



EB10875 (0.3 $\mu$ g/ml) staining of Human Cerebral Cortex (A), Human Frontal Cortex (B) and Mouse Brain lysates (35 $\mu$ g protein in RIPA buffer). Detected by chemiluminescence.