



UK Office

Everest Biotech Ltd

Cherwell Innovation Centre
77 Heyford Park
Upper Heyford
Oxfordshire
OX25 5HD
UK

Enquiries:

info@everestbiotech.com

Sales:

sales@everestbiotech.com

Tech support:

support@everestbiotech.com

Tel: +44 (0)1869 238326

Fax: +44 (0)1869 238327

US Office

Everest Biotech c/o Abcore

405 Maple Street, Suite A106
Ramona,
CA 92065
USA

Inquiries:

info@everestbiotech.com

Sales:

usasales@everestbiotech.com

Tech support:

support@everestbiotech.com

Tel: 888-320-4628 (toll-free)

Fax: 888-841-9041

www.everestbiotech.com

**Research Use Only. Not for
diagnostic or therapeutic use.**

EB10561 - Goat Anti-Pard3b (mouse) Antibody

Size: 100µg specific antibody in 200µl



Target Protein

Principal Names: Pard3b, par-3 partitioning defective 3 homolog B (C. elegans), DN-276O13.2, 1810008K04Rik, 2010002N16Rik, 2810455B10Rik, Als2cr19, PAR3B, PAR3L, PAR3beta, RP23-20G7.1, DN-276O13.2, PAR3-L protein, PAR3-beta, amyotrophic lateral sclerosis 2 chromosomal region candidate gene 19 protein homolog, partitioning defective 3 homolog B, partitioning defective 3-like protein

Official Symbol: Pard3b

Accession Number(s): NP_001074519.2

Non-Human GeneID(s): 72823 (mouse), 301455 (rat)

Immunogen

Peptide with sequence C-RNQDPRQKNP, from the C-Terminus of the protein sequence according to NP_001074519.2.

Please note the [peptide](#) is available for sale.

Purification and Storage

Purified from goat serum by ammonium sulphate precipitation followed by antigen affinity chromatography using the immunizing peptide.

Supplied at 0.5 mg/ml in Tris saline, 0.02% sodium azide, pH7.3 with 0.5% bovine serum albumin.

Aliquot and store at -20°C. Minimize freezing and thawing.

Applications Tested

Peptide ELISA: antibody detection limit dilution 1:32000.

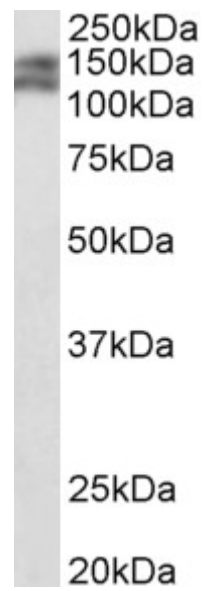
Western blot: Approx 125kDa band observed in Mouse fetal Kidney lysates (calculated MW of 133kDa according to NP_001074519.2). Recommended concentration: 0.3-1µg/ml.

An additional band of unknown identity was also consistently observed at 150kDa. This band was successfully blocked by incubation with the immunizing peptide. We would appreciate any feedback from people in the field - have any such results been reported with other antibodies/lysates? Have any further splice variants/modified forms been reported?

Species Reactivity

Tested: Mouse

Expected from sequence similarity: Mouse, Rat



EB10561 (0.5µg/ml) staining of Mouse fetal Kidney lysate (35µg protein in RIPA buffer). Primary incubation was 1 hour. Detected by chemiluminescence.