



## UK Office

### Everest Biotech Ltd

Cherwell Innovation Centre  
77 Heyford Park  
Upper Heyford  
Oxfordshire  
OX25 5HD  
UK

Enquiries:

[info@everestbiotech.com](mailto:info@everestbiotech.com)

Sales:

[sales@everestbiotech.com](mailto:sales@everestbiotech.com)

Tech support:

[support@everestbiotech.com](mailto:support@everestbiotech.com)

Tel: +44 (0)1869 238326

[www.everestbiotech.com](http://www.everestbiotech.com)

**Research Use Only. Not for  
diagnostic or therapeutic use.**

## EB10621 - Goat Anti-parotid secretory protein (mouse aa146-160) Antibody

Size: 100µg specific antibody in 200µl



### Target Protein

**Principal Names:** Psp, parotid secretory protein, OTTMUSP00000018314, OTTMUSP00000036473, Bpifa2e

**Official Symbol:** Bpifa2

**Accession Number(s):** NP\_032979.1

**Non-Human GeneID(s):** 19194 (mouse)

### Immunogen

Peptide with sequence C-KTNAQTGLPEVTIGK, from the internal region of the protein sequence according to NP\_032979.1.

Please note the [peptide](#) is available for sale.

### Purification and Storage

Purified from goat serum by ammonium sulphate precipitation followed by antigen affinity chromatography using the immunizing peptide.

Supplied at 0.5 mg/ml in Tris saline, 0.02% sodium azide, pH7.3 with 0.5% bovine serum albumin.

Aliquot and store at -20°C. Minimize freezing and thawing.

### Applications Tested

**Peptide ELISA:** antibody detection limit dilution 1:128000.

**Western blot:** Approx 25kDa band observed in Mouse mandibular glands from E17 onwards (calculated MW of 24.8kDa according to NP\_032979.1). Recommended concentration: 1-3µg/ml. Data provided by Everest Grant winner Melinda Larsen, State University of New York, Albany, NY. This antibody has been successfully used in WB on Mouse, PMID: 32390232.

**Immunocytochemistry:** A subset of murine submandibular gland cells (E18) show specific staining in secretory granules. Recommended concentration 4µg/ml. Data provided by Everest Grant winner Melinda Larsen, State University of New York, Albany, NY.

### Species Reactivity

**Tested:** Mouse

**Expected from sequence similarity:** Mouse

### Specific References

**This antibody has been successfully used in Western blot on Mouse:**

Seshagiri Rao Nandula, Ian Huxford, Thomas T. Wheeler, Conrado Aparicio and Sven■Ulrik Gorr

The parotid secretory protein BPIFA2 is a salivary surfactant that affects lipopolysaccharide action

Exp Physiol. 2020 May 11. doi: 10.1113/EP088567

PMID: 32390232

**This antibody has been successfully used in ICC/ IF on Mouse:**

Tanaka, J., Ogawa, M., et al.

Generation of orthotopically functional salivary gland from embryonic stem cells. Nat Commun. 2018 Oct 11;9(1):4216.

PMID: 30310071

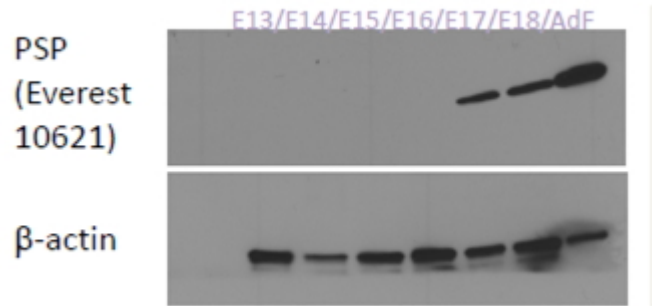
**This antibody has been successfully used in IF on Mouse:**

Ono H, Obana A, Usami Y, Sakai M, Nohara K, Egusa H, Sakai T.

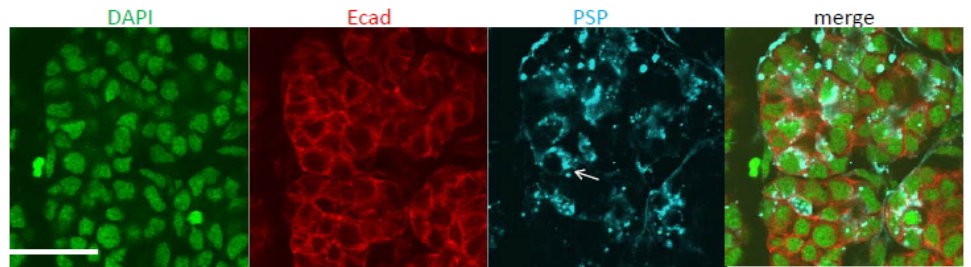
Regenerating Salivary Glands in the Microenvironment of Induced Pluripotent Stem Cells.

Biomed Res Int. 2015;2015:293570. doi: 10.1155/2015/293570. Epub 2015 Jun 22.

PMID: 26185754



EB10621 (1 $\mu$ g/ml) staining of Mouse Mandibular Gland cell lysates (35 $\mu$ g protein in RIPA buffer). Primary incubation was 1 hour. Detected by chemiluminescence (Super Signal).



EB10621 (4 $\mu$ g/ml) staining of Mouse Submandibular gland cells (in blue). Counter staining of Ecad in red and nuclear staining in green.