



UK Office

Everest Biotech Ltd

Cherwell Innovation Centre
77 Heyford Park
Upper Heyford
Oxfordshire
OX25 5HD
UK

Enquiries:

info@everestbiotech.com

Sales:

sales@everestbiotech.com

Tech support:

support@everestbiotech.com

Tel: +44 (0)1869 238326

Fax: +44 (0)1869 238327

US Office

Everest Biotech c/o Abcore

405 Maple Street, Suite A106
Ramona,
CA 92065
USA

Inquiries:

info@everestbiotech.com

Sales:

usasales@everestbiotech.com

Tech support:

support@everestbiotech.com

Tel: 888-320-4628 (toll-free)

Fax: 888-841-9041

www.everestbiotech.com

**Research Use Only. Not for
diagnostic or therapeutic use.**

EB07098 - Goat Anti-PARP2 Antibody

Size: 100µg specific antibody in 200µl



Target Protein

Principal Names: PARP2, poly (ADP-ribose) polymerase family, member 2, HGNC:272, ADPRT2, ADPRTL2, ADPRTL3, PARP-2, pADPRT-2, ADP-ribosyltransferase (NAD poly ADP-ribose polymerase)-like 2, poly (ADP-ribosyl) transferase-like 2, poly(ADP-ribose) synthetase

Official Symbol: PARP2

Accession Number(s): NP_005475.1

Human GeneID(s): [10038](#)

Immunogen

Peptide with sequence C-LDLFEVEKDGEKE, from the internal region of the protein sequence according to NP_005475.1.

Please note the [peptide](#) is available for sale.

Purification and Storage

Purified from goat serum by ammonium sulphate precipitation followed by antigen affinity chromatography using the immunizing peptide.

Supplied at 0.5 mg/ml in Tris saline, 0.02% sodium azide, pH7.3 with 0.5% bovine serum albumin.

Aliquot and store at -20°C. Minimize freezing and thawing.

Applications Tested

Peptide ELISA: antibody detection limit dilution 1:8000.

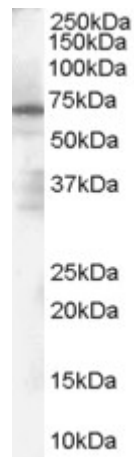
Western blot: Approx 70kDa band observed in Human Spleen lysates (calculated MW of 60.8kDa according to NP_005475.1. Recommended concentration: 1-3µg/ml.

IHC: Paraffin embedded Human Skin and Adrenal Gland. Recommended concentration: 5µg/ml.

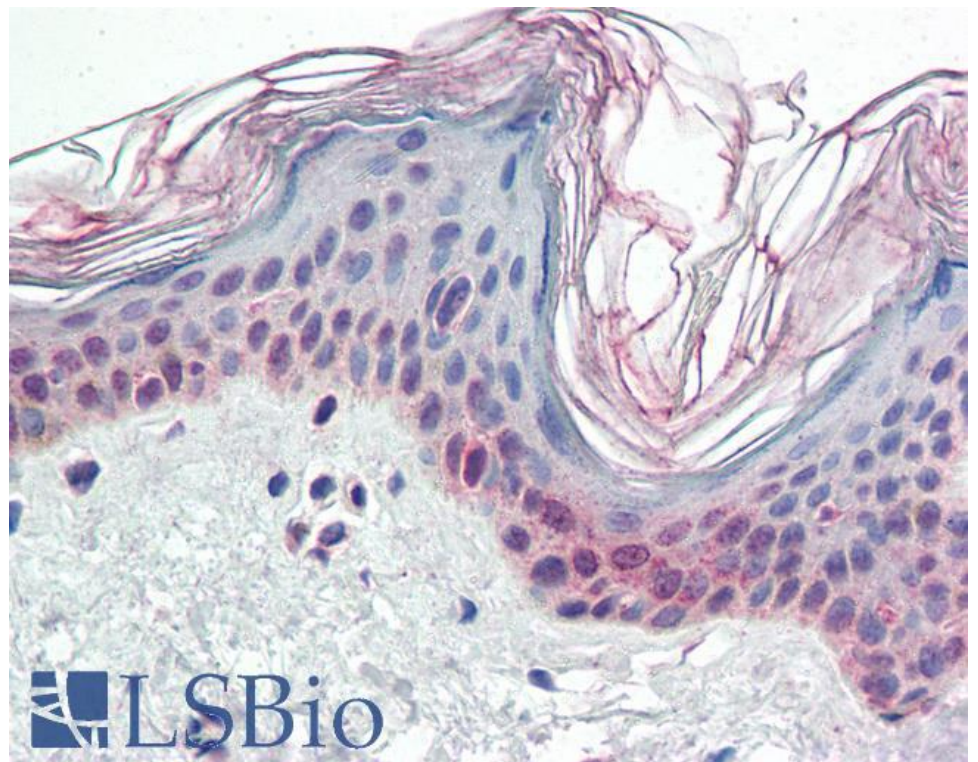
Species Reactivity

Tested: Human

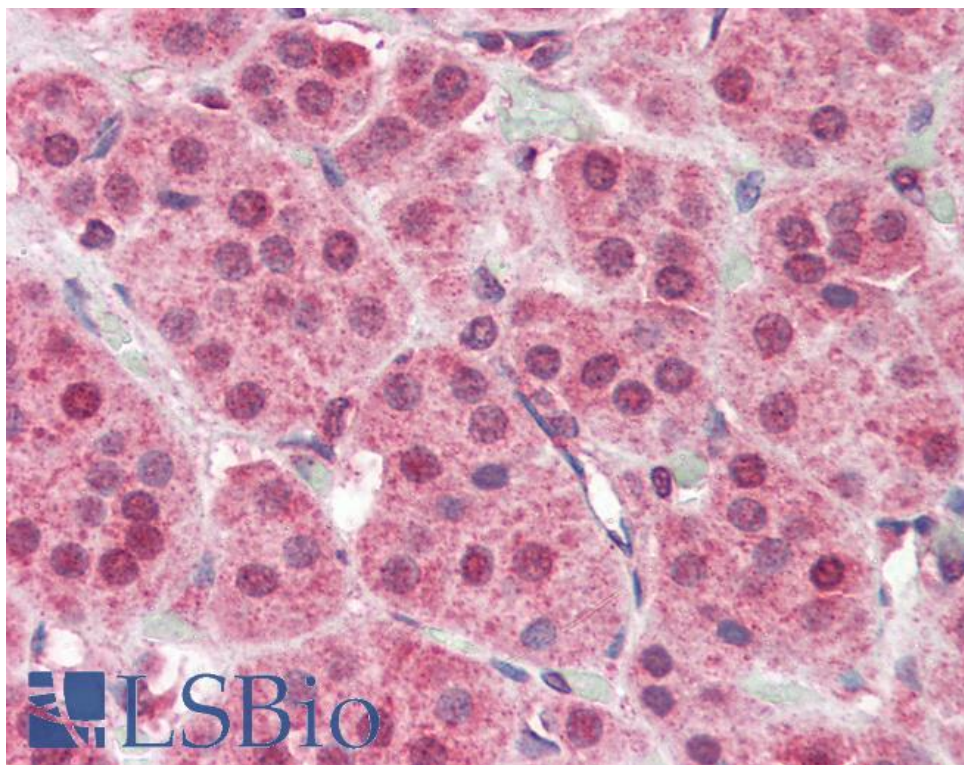
Expected from sequence similarity: Human



EB07098 (1µg/ml) staining of Human Spleen Lysate (35µg protein in RIPA buffer). Primary incubation was 1 hour. Detected by chemiluminescence.



EB07098 (5µg/ml) staining of paraffin embedded Human Skin. Steamed antigen retrieval with citrate buffer pH 6, AP-staining.



EB07098 (5µg/ml) staining of paraffin embedded Human Adrenal Gland. Steamed antigen retrieval with citrate buffer pH 6, AP-staining.