



UK Office

Everest Biotech Ltd

Cherwell Innovation Centre
77 Heyford Park
Upper Heyford
Oxfordshire
OX25 5HD
UK

Enquiries:

info@everestbiotech.com

Sales:

sales@everestbiotech.com

Tech support:

support@everestbiotech.com

Tel: +44 (0)1869 238326

Fax: +44 (0)1869 238327

US Office

Everest Biotech c/o Abcore

405 Maple Street, Suite A106
Ramona,
CA 92065
USA

Inquiries:

info@everestbiotech.com

Sales:

usasales@everestbiotech.com

Tech support:

support@everestbiotech.com

Tel: 888-320-4628 (toll-free)

Fax: 888-841-9041

www.everestbiotech.com

**Research Use Only. Not for
diagnostic or therapeutic use.**

EB06776-B - Goat Anti-Parvalbumin, biotinylated Antibody

Size: 100µg specific antibody in 200µl



Target Protein

Principal Names: PVALB, parvalbumin, D22S749

Official Symbol: PVALB

Accession Number(s): NP_002845.1

Human GeneID(s): [5816](#)

Important Comments: Reported variants represent identical protein: NP_002845.1, NP_001302461.1

Immunogen

Peptide with sequence C-GVDEFSTLVAES., from the C Terminus of the protein sequence according to NP_002845.1.

Please note the [peptide](#) is available for sale.

Purification and Storage

Purified from goat serum by ammonium sulphate precipitation followed by antigen affinity chromatography using the immunizing peptide.

Supplied at 0.5 mg/ml in Tris saline, 0.02% sodium azide, pH7.3 with 0.5% bovine serum albumin.

Aliquot and store at -20°C. Minimize freezing and thawing.

Applications Tested

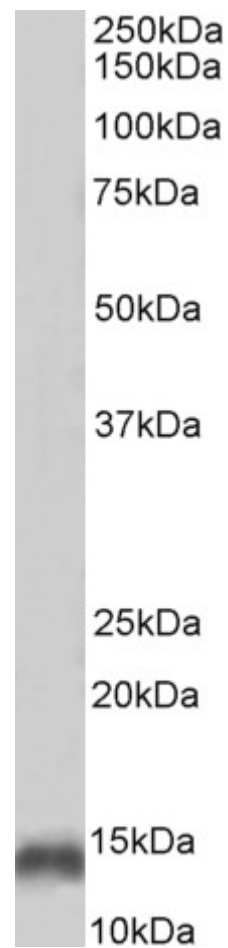
Peptide ELISA: antibody detection limit dilution 1:32000.

Western blot: Approx 12kDa band observed in Human Brain (Cerebellum) lysates (calculated MW of 12.1kDa according to NP_002845.1). See non-biotinylated parental product's datasheet for further QC data. Recommended concentration: 1-3µg/ml.

Species Reactivity

Tested: Human, Rat

Expected from sequence similarity: Human, Rat



Biotinylated EB06776 (2µg/ml) staining of Human Cerebellum lysate (35µg protein in RIPA buffer), exactly mirroring its parental non-biotinylated product. Primary incubation was 1 hour. Detected by chemiluminescence, using streptavidin-HRP and using NAP blocker as a substitute for skimmed milk.