



UK Office

Everest Biotech Ltd

Cherwell Innovation Centre
77 Heyford Park
Upper Heyford
Oxfordshire
OX25 5HD
UK

Enquiries:

info@everestbiotech.com

Sales:

sales@everestbiotech.com

Tech support:

support@everestbiotech.com

Tel: +44 (0)1869 238326

Fax: +44 (0)1869 238327

US Office

Everest Biotech c/o Abcore

405 Maple Street, Suite A106
Ramona,
CA 92065
USA

Inquiries:

info@everestbiotech.com

Sales:

usasales@everestbiotech.com

Tech support:

support@everestbiotech.com

Tel: 888-320-4628 (toll-free)

Fax: 888-841-9041

www.everestbiotech.com

**Research Use Only. Not for
diagnostic or therapeutic use.**

EB10702 - Goat Anti-PAX1 (aa318-329) Antibody

Size: 100µg specific antibody in 200µl



Target Protein

Principal Names: PAX1, paired box 1, HUP48, paired box gene 1, paired domain gene HuP48

Official Symbol: PAX1

Accession Number(s): NP_006183.2

Human GeneID(s): [5075](#)

Non-Human GeneID(s): 18503 (mouse), 311505 (rat)

Immunogen

Peptide with sequence C-PKMEDWAGVNRT, from the internal region of the protein sequence according to NP_006183.2.

Please note the [peptide](#) is available for sale.

Purification and Storage

Purified from goat serum by ammonium sulphate precipitation followed by antigen affinity chromatography using the immunizing peptide.

Supplied at 0.5 mg/ml in Tris saline, 0.02% sodium azide, pH7.3 with 0.5% bovine serum albumin.

Aliquot and store at -20°C. Minimize freezing and thawing.

Applications Tested

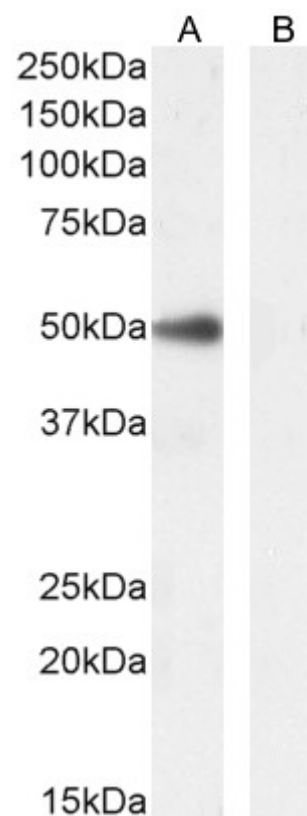
Peptide ELISA: antibody detection limit dilution 1:32000.

Western blot: Approx 50kDa band observed in Human Cerebellum lysates (calculated MW of 55.5kDa according to NP_006183.2). This band was successfully blocked by incubation with the immunizing peptide. Recommended concentration: 0.1-0.3µg/ml. Primary incubation 1 hour at room temperature.

Species Reactivity

Tested: Human

Expected from sequence similarity: Human, Mouse, Dog, Pig, Cow



EB10702 (0.3µg/ml) staining of Human Cerebellum lysate (A) + peptide (B). (35µg protein in RIPA buffer
Detected by chemiluminescence.