



UK Office

Everest Biotech Ltd

Cherwell Innovation Centre
77 Heyford Park
Upper Heyford
Oxfordshire
OX25 5HD
UK

Enquiries:

info@everestbiotech.com

Sales:

sales@everestbiotech.com

Tech support:

support@everestbiotech.com

Tel: +44 (0)1869 238326

www.everestbiotech.com

**Research Use Only. Not for
diagnostic or therapeutic use.**

EB11338 - Goat Anti-PAX3 Antibody

Size: 100µg specific antibody in 200µl



Target Protein

Principal Names: CDHS, HUP2, MGC120381, MGC120382, MGC120383, MGC120384, MGC134778, paired box 3, paired box homeotic gene 3, paired domain gene 3, paired domain gene HuP2, WS1, PAX3

Official Symbol: PAX3

Accession Number(s): NP_852122.1; NP_000429.2; NP_039230.1; NP_852123.1; NP_852124.1; NP_852126.1; NP_852125.1; NP_001120838.1

Human GeneID(s): [5077](#)

Non-Human GeneID(s): 18505 (mouse), 114502 (rat)

Important Comments: This antibody is expected to recognize isoforms PAX3 (NP_852122.1), PAX3d (NP_852123.1), PAX3e (NP_852124.1), PAX3g (NP_852126.1), PAX3h (NP_852125.1), and PAX3i (NP_001120838.1).

Immunogen

Peptide with sequence C-STVHQSTIPSNPD, from the internal region of the protein sequence according to NP_852122.1; NP_000429.2; NP_039230.1; NP_852123.1; NP_852124.1; NP_852126.1; NP_852125.1; NP_001120838.1.

Please note the [peptide](#) is available for sale.

Purification and Storage

Purified from goat serum by ammonium sulphate precipitation followed by antigen affinity chromatography using the immunizing peptide.

Supplied at 0.5 mg/ml in Tris saline, 0.02% sodium azide, pH7.3 with 0.5% bovine serum albumin.

Aliquot and store at -20°C. Minimize freezing and thawing.

Applications Tested

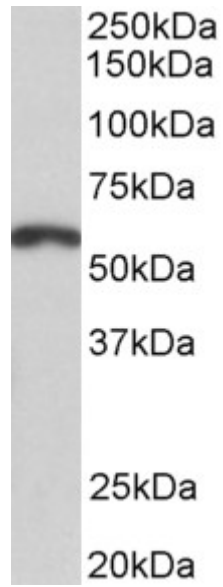
Peptide ELISA: antibody detection limit dilution 1:64000.

Western blot: Approx 55kDa band observed in Human Brain (Frontal Cortex) and Mouse and Rat Brain lysates (calculated MW of 53.0kDa according to Human NP_852122.1 and 52.9kDa according to Mouse NP_032807.3). Recommended concentration: 1-3µg/ml.

Species Reactivity

Tested: Human, Mouse, Rat

Expected from sequence similarity: Human, Mouse, Rat, Dog, Pig, Cow



EB11338 (2 μ g/ml) staining of Mouse Brain lysate (35 μ g protein in RIPA buffer). Primary incubation was 1 hour.
Detected by chemiluminescence.