



UK Office

Everest Biotech Ltd

Cherwell Innovation Centre
77 Heyford Park
Upper Heyford
Oxfordshire
OX25 5HD
UK

Enquiries:

info@everestbiotech.com

Sales:

sales@everestbiotech.com

Tech support:

support@everestbiotech.com

Tel: +44 (0)1869 238326

www.everestbiotech.com

**Research Use Only. Not for
diagnostic or therapeutic use.**

EB09787 - Goat Anti-PAX4 Antibody

Size: 100µg specific antibody in 200µl



Target Protein

Principal Names: KPD, MGC129960, MODY9, paired box 4, paired box gene 4, paired domain gene 4, PAX4

Official Symbol: PAX4

Accession Number(s): NP_006184.2

Human GeneID(s): [5078](#)

Non-Human GeneID(s): 18506 (mouse), 83630 (rat)

Immunogen

Peptide with sequence C-GKLATATSLPEDTVR, from the internal region of the protein sequence according to NP_006184.2.

Please note the [peptide](#) is available for sale.

Purification and Storage

Purified from goat serum by ammonium sulphate precipitation followed by antigen affinity chromatography using the immunizing peptide.

Supplied at 0.5 mg/ml in Tris saline, 0.02% sodium azide, pH7.3 with 0.5% bovine serum albumin.

Aliquot and store at -20°C. Minimize freezing and thawing.

Applications Tested

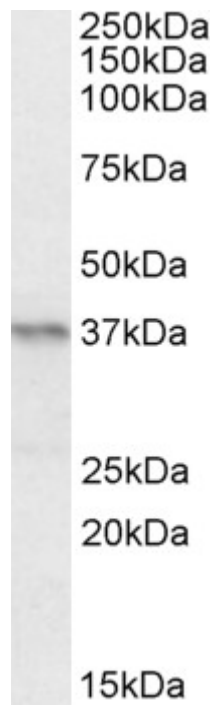
Peptide ELISA: antibody detection limit dilution 1:64000.

Western blot: Approx 37kDa band observed in Mouse Pancreas lysates and in lysates of cell lines A431, HeLa and K562 (calculated MW of 37.1kDa according to Human NP_006184.2 and 38.0kDa according to Mouse NP_035168.1). Recommended concentration: 0.2-0.6µg/ml.

Species Reactivity

Tested: Human, Mouse

Expected from sequence similarity: Human, Mouse, Rat, Dog



EB09787 (0.2 μ g/ml) staining of Mouse Pancreas lysate (35 μ g protein in RIPA buffer). Primary incubation was 1 hour. Detected by chemiluminescence.