



Everest Biotech Ltd  
Cherwell Innovation Centre  
77 Heyford Park  
Upper Heyford  
Oxfordshire  
OX25 5HD, United Kingdom

[everestbiotech.com](http://everestbiotech.com)

[sales@everestbiotech.com](mailto:sales@everestbiotech.com)

[support@everestbiotech.com](mailto:support@everestbiotech.com)

Tel +44 1869 238326

Fax +44 1869 238327

**Research Use Only. Not for diagnostic or therapeutic use.**

Storage: For long-term storage keep aliquots at -20°C. (Store no longer than 12 months at 4°C). Minimize freezing and thawing.

## EB05513 - Goat Anti-PAX8 (N Terminus) Antibody

Size: 100µg specific antibody in 200µl



### Target Protein

**Principal Names:** paired box 8, paired domain gene 8, paired box gene 8, PAX8

**Official Symbol:** PAX8

**Accession Number(s):** NP\_003457.1; NP\_039245.1; NP\_039246.1; NP\_039247.1; NP\_054698.1

**Human GeneID(s):** [7849](#)

**Non-Human GeneID(s):** 18510 (mouse), 81819 (rat)

**Important Comments:** This antibody is expected to recognise all five human isoforms (as represented by NP\_003457.1; NP\_039245.1; NP\_039246.1; NP\_039247.1; NP\_054698.1)

### Immunogen

Peptide with sequence PHNSIRSGHGGLN-C, from the N Terminus of the protein sequence according to NP\_003457.1; NP\_039245.1; NP\_039246.1; NP\_039247.1; NP\_054698.1.

Please note the [peptide](#) is available for sale.

### Purification and Storage

Purified from goat serum by ammonium sulphate precipitation followed by antigen affinity chromatography using the immunizing peptide.

Supplied at 0.5 mg/ml in Tris saline, 0.02% sodium azide, pH7.3 with 0.5% bovine serum albumin.

Aliquot and store at -20°C. Minimize freezing and thawing.

### Applications Tested

**Peptide ELISA:** antibody detection limit dilution 1:32000.

**Western blot:** Approx 40kDa band observed in Human Liver lysates (calculated MW of xxkDa according to NP\_039245.1). Recommended concentration: 1-3µg/ml.

**IHC:** In paraffin embedded Human Thyroid Gland shows nuclear staining in epithelial cells around follicles. Recommended concentration, 1-2µg/ml. A customer found this antibody unsuccessful in immunohistochemistry on Mouse tissues.

### Species Reactivity

**Tested:** Human

**Expected from sequence similarity:** Human, Mouse, Rat

### Specific References

The goat polyclonal antibody used in this paper was manufactured by us:

Borgogni E, Sarchielli E, Sottili M, Santarlasci V, Cosmi L, Gelmini S, Lombardi A, Cantini G, Perigli G, Luconi M, Vannelli GB, Annunziato F, Adorini L, Serio M, Crescioli C.

Elocalcitol inhibits inflammatory responses in human thyroid cells and T cells.

Endocrinology. 2008 Jul;149(7):3626-34.

**PMID:** 18372324

The goat polyclonal antibody used in this paper was manufactured by us:

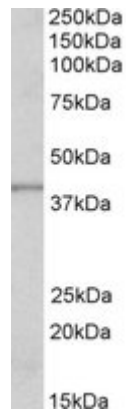
Crescioli C, Cosmi L, Borgogni E, Santarlasci V, Gelmini S, Sottili M, Sarchielli E,

Mazzinghi B, Francalanci M, Pezzatini A, Perigli G, Vannelli GB, Annunziato F, Serio M.

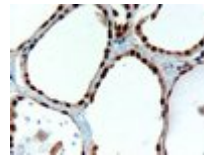
Methimazole inhibits CXC chemokine ligand 10 secretion in human thyrocytes.

J Endocrinol. 2007 Oct;195(1):145-55.

**PMID: 17911406**



EB05513 (1 $\mu$ g/ml) staining of Human Liver lysate (35 $\mu$ g protein in RIPA buffer). Primary incubation was 1 hour.  
Detected by chemiluminescence.



EB05513 (3 $\mu$ g/ml) staining of paraffin embedded Human Thyroid Gland. Microwaved antigen retrieval with  
Tris/EDTA buffer pH9, HRP-staining.